

Lincoln County School District Addendum to the Lincoln County Multi-Jurisdictional NHMP



Photos courtesy of Lincoln County School District

Effective:

December 17, 2025 through December 16, 2030



LINCOLN COUNTY
SCHOOL DISTRICT

Prepared for
Lincoln County School District
1212 NE Fogarty Street
Newport, OR 97365

Prepared by
The University of Oregon
Institute for Policy Research & Engagement
School of Planning, Public Policy, and Management



Institute for Policy
Research and Engagement

This Natural Hazard Mitigation Plan was prepared by:



UNIVERSITY OF
OREGON

School of Planning, Public
Policy and Management

Institute for Policy
Research and Engagement

Planning grant funding provided by:



FEMA

Federal Emergency Management Agency (FEMA)
Hazard Mitigation Grant Program
Grant No: HMGP-PF-5446-01-P-OR

Additional Support Provided by:



*This material is a result of tax-supported research and, as such, is not copyrightable.
It may be freely reprinted with the customary crediting of the source.*



FEMA

March 17, 2026

Stephen Richardson
State Hazard Mitigation Officer
Oregon Department of Emergency Management
3930 Fairview Industrial Dr SE
Salem, OR 97302

Reference: Approval of the Lincoln County Multi-Jurisdictional Natural Hazard Mitigation Plan

Dear Officer Richardson:

In accordance with applicable¹ laws, regulations and policy, the Risk Analysis Branch of FEMA Region 10 Mitigation Division has approved the local mitigation plan for the following jurisdictions:

Lincoln County	City of Depoe Bay	City of Newport
City of Toledo	Beverly Beach Water District	Central Lincoln People's Utility District
Central Oregon Coast FRD	Depoe Bay Fire District	Gleneden Sanitary District
Kernville-Gleneden Beach-Lincoln Beach Water District	North Lincoln Fire and Rescue District	Otter Rock Water District
Panther Creek Water District	Salishan Sanitary District	Seal Rock Water District
Siletz Valley Fire District	SW Lincoln County Water People's Utility District	City of Siletz
Lincoln County School District	City of Lincoln City	

¹ Robert T. Stafford Disaster Relief and Emergency Assistance Act, as amended; the National Flood Insurance Act of 1968, as amended; and National Dam Safety Program Act, as amended; 44 CFR Part 201, Mitigation Planning; and Local Mitigation Planning Policy Guide (FP-206-21-0002).

Officer Richardson

March 17, 2026

Page 2

Mitigation plans may include additional content to meet Element H: Additional State Requirements or content the local government included beyond applicable FEMA mitigation planning requirements. FEMA approval does not include the review or approval of content that exceeds these applicable FEMA mitigation planning requirements.

The approval period for this plan is from December 17, 2025 through December 16, 2030.

The jurisdictions' plan approval ensures the eligibility for project grants under FEMA's Hazard Mitigation Assistance programs. All requests for funding are evaluated individually according to eligibility and other program requirements. Having an approved mitigation plan does not mean that mitigation grant funding will be awarded. Specific application and eligibility requirements can be found in each FEMA grant program's respective policies and annual Notice of Funding Opportunities, as applicable.

FEMA's approval is for a period of five years, effective the date FEMA received the adoption documentation. For this plan, documentation was received on December 17, 2025 and is considered approved as of then. Prior to December 16, 2030, each jurisdiction must review, revise, and submit their plan to FEMA for approval to maintain eligibility for grant funding. The enclosed plan review tool provides opportunities to incorporate into future updates.

Sincerely,

Wendy Shaw, P.E.
Risk Analysis Branch Chief
Mitigation Division

MB:WS

Attachment: Local Mitigation Plan Review Tool

A Resolution Adopting the Lincoln County School District (LCSD) Representation in the Updates to the Lincoln County Multi-Jurisdictional Natural Hazards Mitigation Plan

Whereas, the LCSD recognizes the threat that natural hazards pose to people, property and infrastructure within our community; and

Whereas, undertaking hazard mitigation actions will reduce the potential for harm to people, property and infrastructure from future hazard occurrences; and

Whereas, an adopted Natural Hazards Mitigation Plan is required as a condition of future funding for mitigation projects under multiple FEMA pre- and post-disaster mitigation grant programs; and

Whereas, the LCSD has fully participated in the FEMA prescribed mitigation planning process to prepare the *Lincoln County, Multi-Jurisdictional Natural Hazards Mitigation Plan*, which has established a comprehensive, coordinated planning process to eliminate or minimize these vulnerabilities; and

Whereas, the LCSD has identified natural hazard risks and prioritized a number of proposed actions and programs needed to mitigate the vulnerabilities of the LCSD to the impacts of future disasters within the *Lincoln County, Multi-Jurisdictional Natural Hazards Mitigation Plan*; and

Whereas, these proposed projects and programs have been incorporated into the *Lincoln County, Multi-Jurisdictional Natural Hazards Mitigation Plan* that has been prepared and promulgated for consideration and implementation by the participating cities and special districts of Lincoln County; and

Whereas, the Oregon Department of Emergency Management and Federal Emergency Management Agency, Region X officials have reviewed the *Lincoln County, Multi-Jurisdictional Natural Hazards Mitigation Plan* and pre-approved it contingent upon this official adoption of the participating governments and entities;

Whereas, the NHMP is in an on-going cycle of development and revision to improve its effectiveness; and

Whereas, LCSD adopts the NHMP and directs the Superintendent to develop, approve, and implement, as feasible, the mitigation strategies and any administrative changes to the NHMP.

Now, therefore, be it resolved, that the Lincoln County School District (LCSD) adopts *the Lincoln County Multi-Jurisdictional Natural Hazards Mitigation Plan* as an official plan; and

Be it further resolved that the Lincoln County School District will submit this Adoption Resolution to the Oregon Department of Emergency Management and Federal Emergency Management Agency, Region X officials to enable final approval of the *Lincoln County Multi-Jurisdictional Natural Hazards Mitigation Plan*.

Adopted this 9th day of December, 2025



Certifying Official

Table of Contents - test

INTRODUCTION.....	1
<i>Purpose and Adoption</i>	1
PROCESS AND PARTICIPATION	1
IMPLEMENTATION AND MAINTENANCE	2
<i>Implementation through Existing Programs</i>	3
<i>Capability Assessment</i>	5
Policies and Programs	5
Governance Structure and Personnel	6
Mitigation Successes.....	7
MITIGATION STRATEGY	8
RISK ASSESSMENT	11
<i>Hazard Identification</i>	11
<i>Hazard Analysis</i>	12
<i>Community Characteristics and Assets</i>	13
<i>Vulnerability Assessment</i>	13
<i>School District Area Profiles</i>	18
Lincoln City (North Area).....	18
Newport (West Area).....	23
Toledo (East Area).....	31
Waldport (South Area).....	38
ATTACHMENT A: ACTION ITEM STATUS AND FORMS	42
ATTACHMENT B: PUBLIC INVOLVEMENT SUMMARY	66
ATTACHMENT C: HAZARD MAPS.....	67

List of Tables

TABLE LCSD-1 ACTION ITEMS	9
TABLE LCSD-2 HAZARD ANALYSIS MATRIX	13
TABLE LCSD-3 FACILITIES SUMMARY	16
TABLE LCSD-4 LINCOLN CITY SCHOOLS & SUPPORT FACILITIES	18
TABLE LCSD-5 NEWPORT SCHOOLS & SUPPORT FACILITIES.....	23
TABLE LCSD-6 TOLEDO SCHOOLS & SUPPORT FACILITIES.....	31
TABLE LCSD-7 WALDPORST SCHOOLS & SUPPORT FACILITIES.....	38
TABLE LCSD-8 STATUS OF ALL HAZARD MITIGATION ACTIONS IN THE PREVIOUS PLAN.....	42

List of Figures

FIGURE LCSD-1 LINCOLN COUNTY SCHOOL DISTRICT ORGANIZATIONAL CHART (2025-26)	6
---	---

List of Maps

MAP LCSD-1 DISTRICT BOUNDARIES	15
MAP LCSD-2 EARTHQUAKE LIQUEFACTION (SOFT SOIL) HAZARD AND ACTIVE FAULTS	68
MAP LCSD-3 PROBABILITY OF DAMAGING SHAKING.....	69
MAP LCSD-4 PERCEIVED SHAKING & DAMAGE POTENTIAL, PROBABILISTIC EARTHQUAKE MODEL	70
MAP LCSD-5 PERCEIVED SHAKING AND DAMAGE POTENTIAL, CSZ EARTHQUAKE MODEL	71
MAP LCSD-6 TSUNAMI INUNDATION SCENARIOS	72
MAP LCSD-7 FLOOD HAZARD ZONES (100- AND 500-YEAR FLOODPLAINS)	73
MAP LCSD-8 LANDSLIDE SUSCEPTIBILITY EXPOSURE.....	74
MAP LCSD-9 BURN PROBABILITY AND FIRE HISTORY (1992-2022).....	75
MAP LCSD-10 POTENTIAL WILDFIRE IMPACT (OVERALL)	76

Mitigation Actions

MITIGATION ACTION #1: SEISMIC RESILIENCE	45
MITIGATION ACTION #2: NORTH LINCOLN CITY SCHOOL.....	48
MITIGATION ACTION #3: RESPONSE AND SUPPLY PLANNING	49
MITIGATION ACTION #4: CERT	52
MITIGATION ACTION #5: MITIGATION RESOURCES AND EQUIPMENT	54
MITIGATION ACTION #6: DISASTER COORDINATION CAPACITY.....	56
MITIGATION ACTION #7: WILDFIRE SAFETY AND RESILIENCE.....	58
MITIGATION ACTION #8: WINDSTORM MITIGATION	60
MITIGATION ACTION #9: BACKUP POWER (GENERATORS)	62
MITIGATION ACTION #10: SAFE ROOMS	64

Introduction

Purpose and Adoption

This is the Lincoln County School District (LCSD, School District) addendum to the Lincoln County Multi-Jurisdictional Natural Hazards Mitigation Plan (NHMP). This addendum is not intended to be a standalone document, rather information contained herein supplements information contained in Volume I (Basic Plan) which serves as the NHMP foundation and Volume II (Appendices), which provides additional information. This addendum meets the following requirements:

- Multi-jurisdictional **Plan Requirements: Participation** §201.6(a)(4),
- Multi-Jurisdictional **Plan Content: Risk Assessment** §201.6(c)(2)(iii),
- Multi-jurisdictional **Plan Content: Mitigation Strategy** §201.6(c)(3)(iv), and
- Multi-jurisdictional **Plan Content: Documentation** §201.6(c)(5).

Process and Participation

This section of the NHMP addendum addresses 44 CFR 201.6(a)(3), *Participation* and 44 CFR 201.6(c)(5), *Plan Adoption*.

Lincoln County School District adopted their addendum to the Lincoln County Multi-jurisdictional NHMP on December 9, 2025. FEMA Region X approved the Lincoln County NHMP on December 17, 2025 and the district's addendum on March 17, 2026. With approval of this NHMP the district is now eligible to apply for the Robert T. Stafford Disaster Relief and Emergency Assistance Act's hazard mitigation project grants through December 16, 2030.

In addition to establishing a comprehensive community-level mitigation strategy, the Disaster Mitigation Act of 2000 (DMA2K), and the regulations contained in 44 CFR 201, require that jurisdictions maintain an approved NHMP to receive federal funds for mitigation projects. Local adoption, and federal approval of this NHMP ensures that the Lincoln County School District will remain eligible for hazard mitigation assistance project grants.

The Oregon Partnership for Disaster Resilience (OPDR) at the University of Oregon's Institute for Policy Research and Engagement (IPRE) collaborated with the Oregon Department of Emergency Management (OEM), Lincoln County, and Lincoln County School District to develop this addendum. Members of Lincoln County School District participated in the County NHMP update process (Attachment A and Volume II, Appendix B).

Convener and Committee

The district's Safety Coordinator serves as the NHMP addendum convener. The convener of the NHMP addendum will take the lead in implementing, maintaining, and updating the addendum

in collaboration with the designated convener of the Lincoln County NHMP (Lincoln County Emergency Manager).

Representatives from the District met formally, and informally, to discuss the development of their addendum (Attachment A). They reviewed and developed the district's addendum, with a focus on their risk assessment and mitigation strategy (action items).

This addendum reflects decisions made at the designated meetings, and during subsequent work, and communication with OPDR.

The Lincoln County School District steering committee was comprised of the following representatives:

- Convener, Susan Graves, Safety Coordinator
- Dr. Majalise Tolan, Superintendent
- Rich Belloni, Facilities Director
- Tim Kaufman, Facilities Manager
- Bryan Freschi, Technology Director
- Joshua Bates, Technology Manager
- Jamie Nicholson, Child Nutrition Program Manager
- Patty Graves, Sodexo Nutrition Services Area General Manager
- Kim Cusick, Business Director

Implementation and Maintenance

The Lincoln County School District Board of Directors will be responsible for adopting the addendum to the Lincoln County NHMP. This addendum designates the steering committee, and a convener to oversee the development, and implementation of action items. Because the District is part of the County's multi-jurisdictional NHMP, the District will look for opportunities to partner with the County. The district's steering committee will convene after adoption of the addendum on an annual schedule. The County is meeting on a quarterly basis and will provide opportunities for participating jurisdictions (cities and special districts) to report on NHMP implementation, and maintenance during their meetings. The steering committee, assembled by the convener, will be responsible for:

- Reviewing existing action items to determine suitability of funding;
- Reviewing existing, and new risk assessment data to identify issues that may not have been identified at NHMP creation;
- Educating, and training new steering committee members on the NHMP, and mitigation actions in general;
- Assisting in the development of funding proposals for priority action items;
- Discussing methods for continued public involvement;
- Evaluating effectiveness of the NHMP at achieving its purpose and goals (use Table 4-1, Volume I, Section 4, as one tool to help measure effectiveness); and
- Documenting successes, and lessons learned.

The convener will also remain active in the County’s implementation and maintenance process (Volume I, Section 4).

The Steering Committee will be responsible for activities outlined in Volume I, Section 4.

The district will utilize the same action item prioritization process as the County (Volume I, Section 4 and Volume II, Appendix D).

Implementation through Existing Programs

Many of the NHMP’s recommendations are consistent with the goals and objectives of the district’s existing plans and policies. Where possible, the Lincoln County School District will implement the NHMP’s recommended actions through existing plans and policies. Plans and policies already in existence have support from residents, businesses, and policy makers. Many land-use, comprehensive, and strategic plans get updated regularly, allowing them to adapt to changing conditions and needs. Implementing the NHMP’s action items through such plans and policies increases their likelihood of being supported and implemented.

This NHMP is strategic and non-regulatory in nature, meaning that it does not necessarily set forth any new policy. It does, however, provide: (1) a foundation for coordination and collaboration among agencies, residents, and the district; (2) identification and prioritization of future mitigation activities; and (3) aid in meeting federal planning requirements and qualifying for assistance programs. The Lincoln County School District currently has the following plan[s] that relates to natural hazard mitigation. For a complete list visit the district’s [website](#).

All Hazards School Emergency Plan: Lincoln County School District has worked closely with local emergency response partners to develop an all-hazards, district-wide School Emergency Plan that is highly customized for their schools. The School District also developed a comprehensive, all-hazards **School Bus Emergency Plan**. These plans are based on the needs of each school, the specific hazards faced in Lincoln County, and emergency service agencies’ procedures and response capabilities. The emergency plans include procedures to help respond effectively to emergencies such as fires, earthquakes, tsunamis, tornados, hazardous materials, situations involving dangerous persons, threats, severe weather, medical emergencies, and more.

Family Reunification Plan: A Family Reunification procedure is used when it is necessary to release students directly to their parent, guardian or designated emergency contact due to an emergency that prevents a normal dismissal. This could include a fire or damage to a school building, a natural disaster, a field trip emergency or bus accident, a hazardous materials emergency, a severe winter storm, a situation involving a threat, weapon or violence at school or in the surrounding community, etc. In addition, the School District has robust Family Reunification Kits at each of their schools.

Sheltering Plan: Severe winter storms which bring flooding, downed trees and power lines, landslides, and other hazards, present challenges in transporting students (whether by bus or by family vehicles) to and from school/homes. For these reasons, having the capacity to shelter students for an extended amount of time is necessary. The School District has a Memorandum of Understanding (MOU) with the Red Cross for the use of all LCSD schools as Emergency Shelters.

The following schools also have very limited use generators and disaster supply caches: Taft High 7-12 school (Lincoln City), Newport Middle School (Newport), Toledo Elementary School (Toledo), and Waldport High School (Waldport). The School District also has a three-part Sheltering Protocol for situations when, 1) schools shelter students overnight; 2) Red Cross shelters the public in one of their schools; and 3) Dual Sheltering - if the school uses part of the school to shelter students and releases another portion of the school to the Red Cross for public sheltering.

The [Distant Tsunami Guidelines](#) outline procedures to guide administrators when there is a distant tsunami threat, which typically allows several hours of warning. Although none of the district's schools are located within the tsunami inundation zone, the plan emphasizes proactive coordination with emergency management agencies, clear communication protocols, and the potential for early school closures or transportation adjustments. The guidelines are designed to minimize risk by ensuring timely decision-making, maintaining student accountability, and supporting family reunification efforts in a calm and organized manner.

Haz-Mat Preparedness: All Lincoln County schools have Shelter-in-Place (SIP) supplies in all classrooms so that they can quickly seal off their environments in case of a hazardous materials spill in the community. The most likely hazardous materials spills would come from tanker trucks that travel daily, up and down Hwy 101, the many fish plants on the bayfront in Newport, and from the Georgia Pacific Lumber Mill and the large tanker trucks that travel on Hwy 20 and Sturdevant Road right in front of both Toledo schools on their daily routes to and from the mill. The School District does a complete SIP drill once per school year. The SIP supply buckets/toilets could be used for sanitation needs during an earthquake/tsunami when water/sewer infrastructure is destroyed. The School District participates in countywide hazmat tabletop exercises.

Fire Preparedness: All schools do monthly fire evacuation drills. The School District alternates their drill practices to include blocked exits, practicing during class and non-class times, and using an alternate evacuation assembly area. This helps staff and students get used to "options-based decision-making" so they can adjust their actions as needed depending on the hazard, threat, and circumstances.

NOAA TsunamiReady Supporter: In July 2013, Lincoln County School District was the first school district, nation-wide, to achieve the National Oceanic and Atmospheric Administration's (NOAA) TsunamiReady (TR) Supporter status due to our high level of tsunami awareness and preparedness. The School District's TsunamiReady (TR) status was renewed in 2019.

Earthquake Training & Drills: All schools conduct an earthquake drill twice per year which includes instruction using a customized earthquake/tsunami response video provided on the LCSD website. Key elements of the Lincoln County School District's Earthquake Plan includes procedures to 1) take protective measures during the ground shaking (drop, cover, & hold-on), 2) safely evacuate the building after the shaking stops, and 3) account for, supervise and meet the basic needs of students afterward. The School District conducts one of these drills in conjunction with the Great Oregon ShakeOut.

Disaster Cache Operations Plan: A Disaster Cache Operations Plan has been developed and is contained in each school’s Disaster Supply Cache. It includes instructions for deploying the cache and spells out the school administrator’s five main priorities and how to use the disaster cache to assist with addressing these: Student safety, immediate life-safety-needs, family reunification, immediate basic needs, and ongoing basic needs. Specific instructions are provided, as well as Task Cards, for how to accomplish each task associated with the cache plan.

Communications: The School District has several mechanisms in place to communicate effectively during various emergencies. All schools are equipped with NOAA Weather Alert Radios to receive immediate notifications of distant tsunami alerts, lightning storms, tornadoes, and other hazards. Each school also maintains multiple two-way radios to support emergency communication within the school and with neighboring schools. Additionally, the district operates a mass phone notification system capable of sending out hundreds or thousands of calls and messages simultaneously.

To further strengthen emergency communication capabilities, the district has implemented two key improvements in recent years:

- Each school is now equipped with a dedicated emergency landline phone to ensure communication during power or internet outages. These phones also provide a reliable way for off-site district personnel to reach school offices when other lines are overwhelmed.
- Base radios have been installed in all school offices, enabling direct communication between schools, school buses, and bus barns throughout Lincoln County.

Tsunami Inundation/Evacuation Maps: The Oregon Department of Geology and Mineral Industries (DOGAMI) has created Tsunami Inundation and Evacuation Maps for cities in Lincoln County. The maps help residents and visitors identify what areas are in the tsunami hazard zone and where to locate safe high-ground areas. The School District keeps copies of the maps on their website.

For additional information specific to each region of the School District see section below under community description and the School District website:

<https://lincoln.k12.or.us/resources/family/safety/>

Capability Assessment

The Capability Assessment identifies and describes the ability of the School District to implement the mitigation strategy and associated action items. This is a key component of the Natural Hazard Mitigation Plan (NHMP) update. Capabilities can be evaluated through an examination of broad categories, including existing authorities, policies, programs, funding, and resources.

Policies and Programs

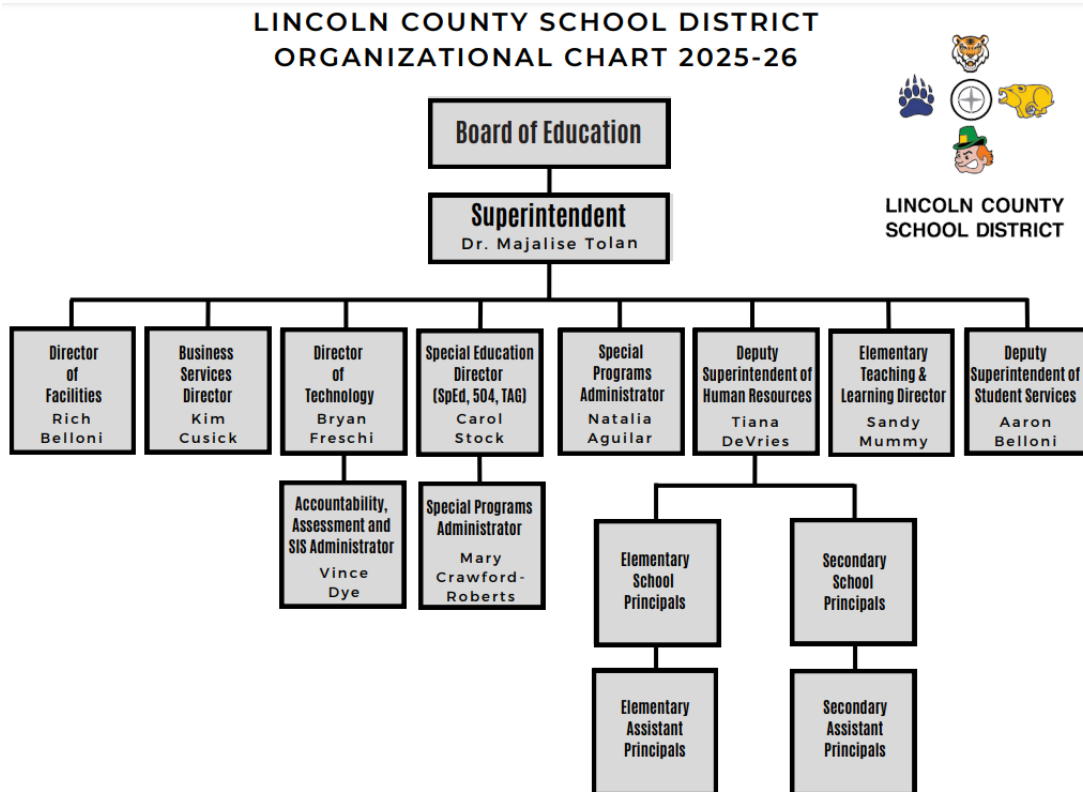
The NHMP provides direction for the School District to explore integration into other planning documents and processes. The School District maintains many plans and guidelines that relate to hazard mitigation. The district’s emergency plans are district-wide and tailored for each school.

These plans include procedures to help respond effectively to all hazards that could impact the schools. This NHMP can be used to supplement existing plans with the district’s exposure to natural hazards, vulnerabilities, and future actions to take.

Governance Structure and Personnel

The School District vests policy authority in an elected five member School Board and places administrative authority for day-to-day operations in professional staff (see Figure LCSD-1, [organization chart](#)).

Figure LCSD-1 Lincoln County School District Organizational Chart (2025-26)



Source: Lincoln County School District

The following School District personnel have assignments that correspond to natural hazard mitigation.

- Safety Coordinator
- Facilities Director & Manager
- Business Services Director
- Technology Director & Operations Manager
- Child Nutrition Program Manager

Mitigation Successes

This is a list of funding that School District has sought out or received from the Seismic Rehabilitation Grant Program (SRGP). For more information, visit Oregon Infrastructure Finance Authority's [Seismic Rehabilitation Grant Program](#).¹

- Toledo High School, (2013-2014 grant award, \$1,468,092) to life-safety standards
- Sam Case Elementary School (2015-17, Phase II grant award, \$1,498,424) to life safety standards.
- Newport High School gym (2015-17, Phase II grant award, \$1,500,000) to life safety standards.
- Taft Elementary School gym (2017-19, Phase II grant award, \$2,493,455) to occupancy standards.
- Oceanlake Elementary School (2020 grant award, \$2,499,090) to occupancy standards.
- Yaquina View Elementary School classroom (2021 grant award, \$2,493,600) to occupancy standards. A SRGP grant was recently awarded to retrofit the remaining classroom (2025, \$2,493,860).

Below is a list of other mitigation projects that have been completed by the district since their first NHMP. Additional mitigation projects that have been completed by the district are presented in the School District Area Profiles.

- The School District passed a bond measure which included building a new high school in Waldport, out of the tsunami zone. The new high school opened for high school students in August 2013. The old high school was then closed.
- The School District received a Pre-Disaster Mitigation Grant from FEMA to demolish the old Waldport High School (WHS) that was in the tsunami zone and convert the land into open space. Funds from the grant were also used to demolish most of the old Waldport Middle School, except for the gymnasium (additional funds from the grant were used to demolish the old Taft Elementary School, in the tsunami zone in Lincoln City).
- A Disaster Cache Operations Plan has been developed and is contained in each school's Disaster Supply Cache. It includes instructions for deploying the cache and spells out the school administrator's five main priorities and how to use the disaster cache to assist with addressing these: Student safety, immediate life-safety-needs, family reunification, immediate basic needs, and ongoing basic needs. Specific instructions are provided, as well as Task Cards, for how to accomplish each task associated with the cache plan.
- LCSD performed a complete overhaul/update of their School Emergency Plan, strengthening existing protocols and adding protocols for additional hazards and threats.
- Training Videos were developed to correspond with each hazard and threat in the School Emergency Plan.

¹ The Seismic Rehabilitation Grant Program (SRGP) is a state of Oregon competitive grant program that provides funding for the seismic rehabilitation of critical public buildings, particularly public schools, and emergency services facilities.

Mitigation Strategy

This section of the NHMP addendum addresses 44 CFR 201.6(c)(3)(iv), *Mitigation Strategy*.

The Lincoln County School District adopts the mission and hazard mitigation goals described in Volume I.

To develop the district’s mitigation strategy (action items), the Steering Committee assessed the district’s risk and identified potential issues to be addressed. The Steering Committee also noted what mitigation accomplishments have been made in recent years.

Priority Action Items

Table LCSD-1 presents a list of mitigation actions. The highest priority actions are shown with orange highlight. The District will focus their attention, and resource availability, upon these achievable, high leverage, activities over the next five-years. Although this methodology provides a guide for the steering committee in terms of implementation, the steering committee has the option to implement any of the action items at any time. This option to consider all action items for implementation allows the committee to consider mitigation strategies as new opportunities arise, such as capitalizing on funding sources that could pertain to an action item that is not currently listed as the highest priority.

Table LCSD-1 Action Items

Mitigation Strategies		Impacted Hazard											Implementation and Maintenance				
Action Item #	Statement	Air Quality	Coastal Erosion	Drought	Earthquake	Extreme Heat	Flood	Landslide	Tsunami	Volcanic Event	Wildfire	Windstorm*	Winter Storm	Potential Funding Resources	Lead	Timeline	Cost
1	Seismically assess and retrofit vulnerable facilities and infrastructure to increase their resiliency to seismic hazards. Consider both structural and non-structural retrofit options.				X									Seismic Rehabilitation Grants (IFA), Local Funding Resources (general fund), grants	Facilities and Maintenance	L	H
2	Construct a new school in Lincoln City out of the Tsunami Inundation Zone.				X		X	X	X		X			Local Funding Resources, bond	Facilities and Maintenance	L	H
3	Develop disaster response plans, procure and stock emergency supplies on all school buses, and provide caches (food and emergency supplies) throughout the School District.				X		X	X	X		X	X	X	Local Funding Resources, grants	Safety Coordinator	Ongoing	L to H
4	Maintain and promote the Teen CERT program activity in the School District and recruit school staff members to be trained in CERT.	X			X	X	X	X	X	X	X	X	X	Local Funding Resources, grants	Safety Coordinator	Ongoing	L
5	Improve, maintain, and obtain resources and equipment essential for mitigating the impacts of disasters.	X			X	X	X	X	X	X	X	X	X	Local Funding Resources, HMA (HMGP), OREM, PIER, grants	Facilities and Maintenance	M	M to H
6	Develop, maintain, and enhance the School District's capacity to provide services during and after a disaster event.	X			X	X	X	X	X	X	X	X	X	Local Funding Resources, grants, bond	Safety Coordinator & Technology Director	M	L to H
7	Enhance the safety and resilience of school campuses and district facilities by developing and implementing comprehensive fire and wildfire mitigation strategies, while expanding emergency preparedness and evacuation capabilities to effectively respond to wildfire and other hazard-related threats.				X		X	X	X		X		X	Local Funding Resources, grants, bond	Safety Coordinator	S	L to H
8	Develop a wind and straight-line windstorm mitigation plan and perform actions to decrease the risk of damage from these high probability events.											X		Local Funding Resources, grants, bond	Safety Coordinator	S	L to H
9	Enhance the resilience and operational continuity of Lincoln County School District facilities during power outages by increasing backup power capacity through the acquisition and installation of reliable generators at critical school sites.				X			X	X		X	X	X	Local Funding Resources, grants, bond, FEMA HMA	Safety Coordinator	S	M to H
10	Strengthen student and staff safety during severe weather and other hazardous events by developing and implementing a comprehensive Safe Rooms Plan for each school facility, ensuring access to										X	X	X	Local Funding Resources, grants, bond, FEMA HMA	Safety Coordinator	S	L to H

Mitigation Strategies		Impacted Hazard											Implementation and Maintenance				
Action Item #	Statement	Air Quality	Coastal Erosion	Drought	Earthquake	Extreme Heat	Flood	Landslide	Tsunami	Volcanic Event	Wildfire	Windstorm*	Winter Storm	Potential Funding Resources	Lead	Timeline	Cost
	structurally reinforced, hazard-resistant shelter areas across the district.																

Source: Lincoln County School District steering committee, 2025.

Cost: L (less than \$50,000), M (\$50,000-\$499,999), H (\$500,000-\$5 million), VH (more than \$5 million),

Potential Funding Sources: HMA=FEMA's Hazard Mitigation Assistance disaster and non-disaster grant programs

Timing: Ongoing (continuous), Short (1-4 years), Medium (4-10 years), Long (10 or more years)

Priority Actions: Identified with orange highlight

* - the windstorm hazard includes tornadoes (water spouts)

Dark Grey highlight indicates that the hazard does not impact the jurisdiction.

Risk Assessment

This section of the NHMP addendum addresses 44 CFR 201.6(b)(2) - *Risk Assessment*. In addition, this chapter can serve as the factual basis for addressing Oregon Statewide Planning Goal 7 – Areas Subject to Natural Hazards. Assessing natural hazard risk has three phases:

Phase 1: Identify hazards that can impact the jurisdiction. This includes an evaluation of potential hazard impacts – type, location, extent, etc.

Phase 2: Identify important community assets and system vulnerabilities. Example vulnerabilities include people, businesses, homes, roads, historic places and drinking water sources.

Phase 3: Evaluate the extent to which the identified hazards overlap with, or have an impact on, the important assets identified by the community.

The local level rationale for the identified mitigation strategies (action items) is presented herein, and within Volume I, Section 2, and Volume II, Appendix C.

Hazard Identification

This section profiles the district’s hazards and assesses their vulnerabilities, distinct from the countywide planning area. Detailed hazard profiles of the most significant countywide hazards are described in Volume I, Section 2. The detailed profiles include hazard characteristics, history, location, extent, previous occurrences, and probability of future occurrences. An event that affects the County, or applicable cities where district assets are located (Lincoln City, Newport, Toledo, Waldport), is likely to affect the district as well. In addition, because school district buses travel throughout the county multiple times every day, any event affecting any part of the county is likely to impact the school district. However, not all hazards impact the district assets. The district chose to profile the hazards shown in Table LCSD-2 due to the impact these hazards have upon their assets. Factors included during discussions by the district included the number of potential assets damaged, extent of damage, and length of time required for repairs (economic losses were also considered).

Additional information is found in the [Risk Assessment for Region 1, Oregon Coast, Oregon SNHMP \(2020\)](#).

National Flood Insurance Program (NFIP)

The district does not have the authority to adopt and enforce floodplain management or other land use regulations for the areas within its jurisdiction. For more information on National Flood Insurance Program (NFIP) claims and other potential flood impacts, see the City of (Lincoln City, Newport, Toledo, Waldport (Volume III).

Hazard Analysis

The NHMP steering committee updated the district’s previous [hazard analysis](#), to reflect current conditions. Where appropriate, changes were made to distinguish the district’s risks from those in the County’s hazard analysis, as detailed throughout this addendum. Table LCSD-2 shows the hazard analysis matrix listing each hazard in rank from high to low. For local governments, conducting hazard analysis is a useful step in planning for hazard mitigation, response, and recovery. The method provides the jurisdiction with a sense of hazard priorities but does not predict the occurrence of a particular hazard. See Volume I, Section 2 for methodology details.

Windstorm, winter storm, landslide, wildfire, Cascadia Subduction Zone earthquake, and local tsunami are the **high hazard threats** to the district. Distant tsunami, riverine flood, extreme heat event, and air quality/smoke are the middle hazard threats. Tornado, coastal flood, crustal earthquake, and volcanic event are the **low hazard threats**.

The school district’s primary responsibilities focus on the management, operation, and safety of educational facilities and services that support student learning. While the safety and well-being of students and staff are central to the district’s mission, the district does not serve as the lead agency for emergency response or public safety during hazard events.

Instead, the district works in close coordination with county and city agencies that have broader responsibilities for managing community-wide impacts. The district provides support through facility management, communication, and coordination related to school operations, while local jurisdictions lead efforts in emergency response, public safety, and disaster recovery.

Given this operational scope, the district is not directly impacted by the following hazards and does not maintain infrastructure or responsibilities that warrant profiling them in its hazard analysis: coastal erosion and drought. These hazards fall outside the district’s direct impact zone or operational purview and are more appropriately addressed by other agencies within the broader emergency management framework.

In addition, hazards classified in the “bottom tier” are considered to pose low vulnerability and/or low probability of occurrence within the district. As such, the district has chosen not to develop specific mitigation strategies for these hazards. Instead, it will collaborate with Lincoln County and relevant cities to support and implement mitigation efforts related to these lower-priority risks.

Table LCSD-2 Hazard Analysis Matrix

Hazard	Maximum				Total Threat Score	Hazard Rank	Hazard Tiers
	History	Vulnerability	Threat	Probability			
Windstorm	20	50	100	70	240	#1	Top Tier
Winter Storm	18	35	90	70	213	#2	
Landslide	20	40	80	70	210	#3	
Wildfire	10	40	100	56	206	#4	
Earthquake (Cascadia)	2	50	100	49	201	#5	
Local Tsunami	2	50	100	49	201	#6	
Distant Tsunami	10	30	80	49	169	#7	Middle Tier
Flood (Riverine)	20	15	40	70	145	#8	
Extreme Heat Event	8	15	60	56	139	#9	
Air Quality/Smoke	8	15	60	49	132	#10	
Tornado	8	10	30	56	104	#11	Bottom Tier
Flood (Coastal)	10	15	40	35	100	#12	
Earthquake (Crustal)	10	20	40	21	91	#13	
Volcanic Event	2	5	40	7	54	#14	

Source: Lincoln County School District steering committee, 2025.

Community Characteristics and Assets

The Lincoln County School District in Oregon spans along the central Oregon Coast, from Lincoln City in the north to Yachats in the south. It serves a diverse set of coastal and inland communities (Map LCSD-1). The district encompasses both urban and rural areas, covering a wide geographic region that includes coastal lowlands, forested hills, and river valleys

The following section presents key demographic and asset information specific to the Lincoln County School District (see Table LCSD-3). These community characteristics influence how natural hazards affect the district and inform how mitigation strategies are developed and prioritized. Considering district-specific assets during the planning process helps identify effective and context-appropriate mitigation measures. For additional details on local vulnerabilities and resources, refer to the [area profiles](#) provided later in this document.

Vulnerability Assessment

No development or population changes affected the jurisdiction’s overall vulnerability to their profiled hazards. In addition, development and population forecasts are not expected to increase or decrease the impact of their profiled hazards.

Due to the large geographic area, the district is at risk of many different natural hazards. Most district facilities are located on the coast, which could result in locations being cut off from each other in the event of an earthquake or tsunami. Some district facilities are also located in urban areas (Newport, Lincoln City), which provides opportunities for support that otherwise would not exist in more rural areas (Toledo & Waldport). The facilities located in

the eastern portion of the county are at higher risks of wildfire due to having drier and denser forested land.

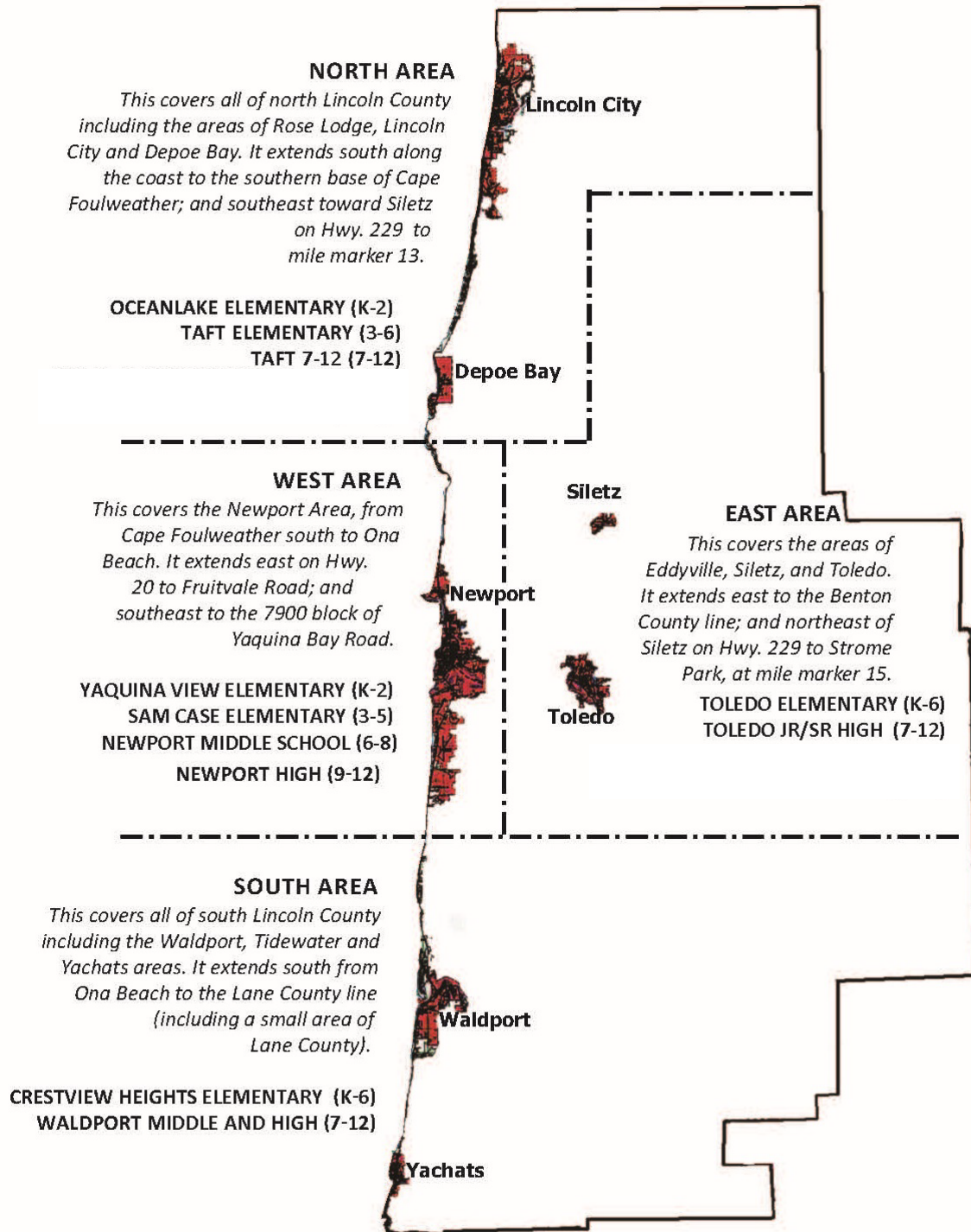
Table LCSD-2 provides the ranking of hazards of concern based on total threat score and Table LCSD-3 shows hazard impact to the district's assets.

Hazard area extent and location maps are included in Attachment B. Information shown on the maps is for planning purposes, represents the conditions that exist at the map date, and is subject to change. Refer to the original source documentation to better understand the data sources, results, methodologies and limitations of each dataset presented.

2007 Rapid Visual Survey

Oregon adopted statewide building codes in the 1970s, but more rigorous seismic standards were not implemented until the 1990s and early 2000s. While all Lincoln County School District buildings have been relocated outside of tsunami inundation zones, some facilities may still require seismic upgrades to meet current safety standards (see related action items). The Oregon Department of Geology and Mineral Industries (DOGAMI) conducted an assessment in 2007 to estimate the seismic resilience of public buildings in Lincoln County, including schools and public safety facilities. For more information click this link: [DOGAMI report O-07-02: Statewide Seismic Needs Assessment](#).

Map LCSD-1 District Boundaries



Source: Lincoln County School District

Note: This map shows approximate boundaries for general informational purposes only.

Table LCSD-3 Facilities Summary

Name/Number	Address	Identified Hazard Exposure										
		AQ	CE	DR	EQ	EH	FL	LS	TS	VE	WF	WS
Lincoln City Schools												
Oceanlake Elementary	2420 NE 22 nd St, Lincoln City				X			X				
Taft Elementary [^] <i>(former high and middle)</i>	4040 SE High School Dr, Lincoln City				X			X			X	
Taft 7-12 High* <i>& Future Bound Alternative</i>	3780 SE Spyglass Ridge Dr, Lincoln City <i>(housed in the Voris Field Building)</i>				X						X	
Newport Schools												
Yaquina View Elementary	351 SE Harney St, Newport				X			X				
Sam Case Elementary	459 NE 12 th St., Newport				X							
Newport Middle <i>& Future Bound Alternative</i>	825 NE 7 th St, Newport				X			X			X	
Newport High – East	322 NE Eads St, Newport				X							
Newport High– West* [^] <i>Newport High Young Adult ECEL Program Education for Community Employment & Life</i>	311 NE Eads St, Newport				X							
Toledo Schools												
Toledo Elementary	600 SE Sturdevant Rd, Toledo				X			X			X	
Toledo Jr/Sr High* [^] <i>(in County)</i>	1800 NE Sturdevant Rd, Toledo				X			X			X	
Waldport Schools												
Crestview Heights	2750 Crestline Dr, Waldport				X						X	
Waldport Middle and High* [^]	3000 Crestline Dr, Waldport										X	
District Offices & Support Facilities												
Teaching & Learning Center/District Office (EOC)	1212 NE Fogarty St, Newport				X			X			X	
The Compass Center for Youth & Families	459 SW Coast Hwy, Newport, OR				X							
Facilities & Maintenance - North	Holly Farm 6110 NE Devils Lake Blvd, Lincoln City				X		X		X			

Table LCSD-3 Facilities Summary

Name/Number	Address	Identified Hazard Exposure											
		AQ	CE	DR	EQ	EH	FL	LS	TS	VE	WF	WS	WT
Facilities & Maintenance – Main (<i>Alternate EOC</i>) Sodexo Nutrition & Custodial Services	295 NE Burgess Rd, Toledo				X								
Arcadia School (District Support Offices)	1811 NE Arcadia Dr, Toledo, OR				X			X					
Transportation													
Bus Barn – Main (Toledo)	Located at Facilities & Maintenance (Main)				X			X			X		
Bus Barn – North (Lincoln City)	Holly Farm Bus Barn 6110 NE Devils Lake Blvd				X			X			X		
Bus Barn – South (Waldport)	Located at Crestview Heights School				X			X			X		
Childcare and/or Preschool													
Early Intervention (Early Childhood Center)	420 NE 12th St, Newport				X								
Tiger Preschool	Located at Oceanlake Elementary, Lincoln City	See vulnerability data for facility that this program is located within											
Early Intervention	Located at Oceanlake Elementary, Lincoln City												
Baby Cubs Childcare & Teen Parent Program	Located at Newport High – West, Newport												
Cubby Preschool	Located at Yaquina View Elementary, Newport												
Baby Boomers Preschool	Located at Toledo Elementary School, Toledo												
Wee Irish Preschool	Located at Crestview Heights, Waldport												

Source: Information provided by Lincoln County School District
 Potential impact from DOGAMI, Open-File Report O-20-11, Lincoln County Natural Hazard Risk Report (2020).
 Dark Grey highlight indicates that the hazard does not impact the jurisdiction.

Table Key:

“X” – Facility may be exposed and may be impacted by the identified hazard per a visual inspection of the mapped hazard area
 Notes: * - School Based Health Center Operated by Lincoln County Health and Human Services; ^ - Homeless Education & Literacy Program Center (HELP)
 [blank] = facility exposure has not been assessed for this hazard

Hazard Descriptions:

- | | | | |
|----------------------|-------------------|---------------------|------------------------|
| AQ = Air Quality | EH = Extreme Heat | LS = Landslide | WF = Wildfire |
| CE = Coastal Erosion | EQ = Earthquake | TS = Tsunami | WS = Windstorm/Tornado |
| DR = Drought | FL = Flood | VE = Volcanic Event | WT = Winter Storm |

School District Area Profiles²

The following section provides information on the School District specific demographics and assets. Many of these community characteristics can affect how natural hazards impact communities, and how communities choose to plan for natural hazard mitigation. Considering the School District specific assets during the planning process can assist in identifying appropriate measures for natural hazard mitigation.

Lincoln City (North Area)

Table LCSD-4 shows schools and support facilities within Lincoln City. The three schools serve approximately 1,700 children from an expansive geographic region: from Otter Rock & Depoe Bay in the South, to several miles up Hwy 229 to the East towards Siletz, and out to Cascade Head area off Hwy 101 to the North and to Rose Lodge area on Hwy 18 to the Northeast (Map LCSD-1)

Table LCSD-4 Lincoln City Schools & Support Facilities

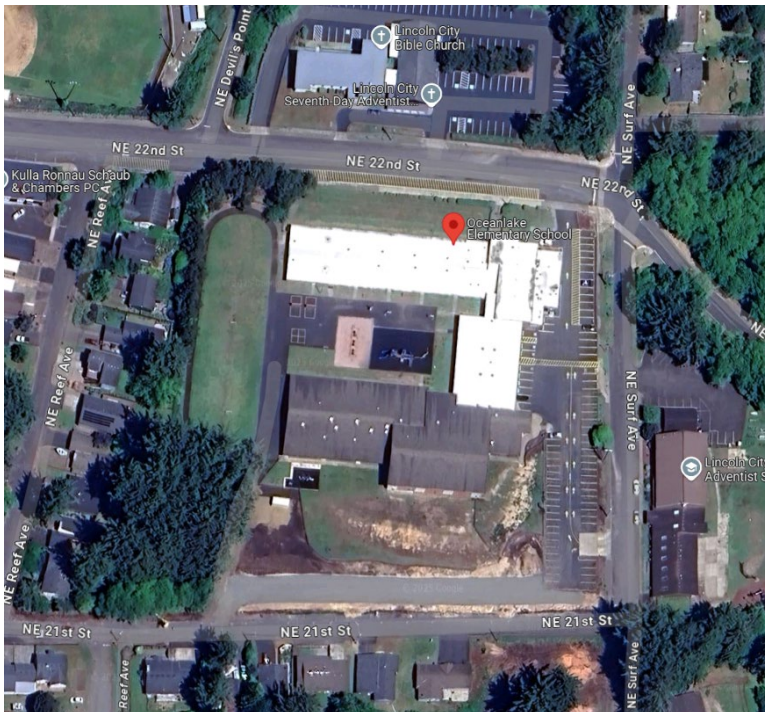
School/Facility Name	Address
Oceanlake Elementary School (pk-2)	2420 NE 22nd St
Taft Elementary School (3-6)	4040 SE High School Dr
Taft 7-12 High School (7-12)	3780 SE Spyglass Ridge Dr
Facilities & Maintenance – North	New: 6110 NE Devils Lake Blvd
Bus Barn – North (Holly Farm Bus Barn)	6110 NE Devils Lake Blvd

Oceanlake Elementary School (OLE) serves students in grades pK-2. It was originally built in 1951, and a new wing was constructed with the 2012 Bond. It also houses a daily afterschool program and summer all-day program operated by Lincoln City Parks & Recreation. Preschool and Early Intervention Preschool were added to this school since the last NHMP update. Directly across the street is a private K-12 school (Lincoln City Christian School). OLE is in the middle of the city, near the swimming pool, fire station, ambulance company, and hospital. It is loosely bordered on the west by Hwy 101 going north and south, the Pacific Ocean to the West, and Devils Lake to the East. The building is mostly single-story, except for one section that has a basement and two small sections that have a second story. This school had a major addition (of classrooms, a gymnasium and a new office area) due to the passage of a 2012 construction bond. Information on the school’s estimated seismic resistance and collapse potential, determined by DOGAMI in 2007, is provided [here](#). Oceanlake Elementary School, because of its geographic location, will not be able to rely on the sheltering capacity available at Taft High School, which is the main Red Cross shelter for Lincoln City. Oceanlake School needs its own full-school generator since students would likely need to shelter there during severe weather emergencies. At the time of the last NHMP, the south and west portion of the campus was heavily wooded with dense trees, increasing risk to the school when considering the high probability wind events and wildfire events. Since then, the goal to create defensible space around this school was partially

² This section was authored by Sue Graves, Lincoln County School District Safety Coordinator, and edited by OPDR.

accomplished when they removed a large portion of trees and underbrush along the south side of the building to create a new on-campus driveway. The School District received a SRGP grant to retrofit the gym and that work was completed (SRGP 2020, \$2,499,090).

Oceanlake Elementary School



Taft Elementary School (TAES) serves students in grades 3-6. The school also has a HELP Center (Homeless Education and Literacy Program) for the School District’s families/students experiencing homelessness. It also houses a daily 21st Century After-School Program. The school, built in 1951, has had at least six additions, making it more vulnerable to seismic hazards. It is located on the top of a hilly site with a heavily wooded canyon on its east side (with wetlands), making it at high risk for wildfire and wind damage. While most of the school is single story, the

portion adjoining the gymnasium has a basement and a second floor. Information on the school's estimated seismic resistance and collapse potential, determined by DOGAMI in 2007, is provided [here](#). However, an independent engineering evaluation indicated that the gymnasium area of the school has a greater risk for collapse. The School District received a SRGP grant to retrofit the gym and that work was completed.

Taft 7-12 High School (TAHS) serves students in grades 7-12. In addition, Lincoln County Health & Human Services operates a School-Based Health Center at the school. There is also an alternative middle school called Future Bound on the campus located in the grandstand offices at Voris Field. The school, built in 1998, is a two-story building flanked by wetlands to the immediate west and dense forest to the east. The forest's presence makes the area particularly vulnerable to wildfires and wind damage, prompting the school district to conduct brush mitigation efforts to help reduce this risk. Information on the school's estimated seismic resistance and collapse potential, determined by DOGAMI in 2007, is provided [here](#). Taft 7-12 is a designated Temporary Tsunami Assembly Area for this area of Lincoln City and is the primary Red Cross Shelter for Lincoln City.

Taft Elementary School and Taft 7-12 High School share a larger campus with multiple athletic fields and a neighboring community college. Because these schools are bordered by forest lands, they are at higher risk for wildfires, wild animals wandering onto campus, and errant gun shots, due to target shooting nearby. Both Taft schools are geographically within walking distance of one of Lincoln City's fire stations.

Taft Elementary School & Taft 7-12 High School



Transportation & Support Facilities

Buses & Bus Barn: School buses and a bus barn have been housed for many years at the old Taft Elementary School property in the tsunami zone (on SE 50th Street). In 2019 the buses and bus barn were relocated to a site on the North end of Lincoln City. The new facility is outside of the tsunami zone on NE Devils Lake Rd. However, this property is surrounded by dense forest and is at high risk for wildfire and wind damage.

Facilities & Maintenance Building (North): The School District Facilities & Maintenance building was in the tsunami zone at the old Taft Elementary School property, but it moved out of the tsunami zone to the same property as the bus barn.

Facilities & Maintenance North



Former Facilities & Maintenance Building



New Facilities & Maintenance Building (alongside the Bus Barn)

Natural Hazard Preparedness and Mitigation Activities

Generator: Taft High School has an old and obsolete generator with an underground 500-gallon tank of diesel fuel. It doesn't power up much of the school and it often doesn't work. The school also has a large freezer that holds a month worth of food for the school. Taft High is the primary designated shelter school for Lincoln City. The School District recently were awarded a Planning, Infrastructure, and Economic Revitalization (PIER) Grant to purchase a new full-school generator and 2,500 gallon above-ground fuel tank. The work has not yet started.

Earthquake/Tsunami Hazard: Several years ago, the School District closed the old Taft Elementary School on 51st Street, which was in the tsunami zone and incorporated those students into other Lincoln City schools. Subsequently, the School District used FEMA PDM Grant funds (from the Waldport grant) to demolish the old Taft elementary school. Currently, all Lincoln City schools are out of the tsunami hazard zone. However, in the event of a large Cascadia Subduction Zone earthquake and tsunami, it is expected that access to all Lincoln City schools will be unavailable due to tsunami inundation on Hwy 101 (both north and south) and Hwy 18 to the east. Current building codes are for life-safety only and do not provide for re-occupancy after a Cascadia Subduction Zone Earthquake. Scientists expect roads and bridges to have significant damage from a local earthquake and tsunami. The School District expects all basic infrastructure services to be destroyed/damaged by the earthquake. In anticipation of this, the School District is preparing to do search and rescue as much as feasible, provide medical support, expect delayed family reunifications, and provide for the basic needs of students and staff for many days and possibly several weeks before help may arrive. More work is to be done to be adequately prepared.

Teen CERT: Taft High School (TAHS) has a robust, semester long Teen CERT class in which students learn about hazards that may impact their area and are taught how to be rescuers in a large disaster when professional rescuers are not readily available or are overwhelmed. These students will be the first responders at both Taft schools if a large Cascadia Subduction Zone earthquake occurs when school is in session. Since the 2009/10 school year, over 460 TAHS students have taken the Teen CERT semester course. North Lincoln Fire & Rescue, Depoe Bay Fire & Rescue, and CERTs of Lincoln County assist with this course. Unfortunately, the Teen CERT students will not be able to serve Oceanlake Elementary School due to geographic distance and expected tsunami inundation.

Disaster Supply Caches: In 2012 and again in 2015 the School District collaborated with the county, city, fire, Oregon Coast Community College, and other agencies and organizations to develop Disaster Caches of basic survival supplies. One Cache is located at Taft High School and the other was near Oceanlake Elementary in the Kirtsis Field parking lot. Since the 2020 NHMP update the School District, with community partners, moved the Kirtsis Field cache to OLE and added an additional container of supplies at OLE. They also added an additional container of supplies at Taft High. These caches are designated for use by the schools if a disaster occurs when school is in session (this includes neighboring schools). Otherwise, they will be available for city and fire to assist with the basic needs of the community in a disaster. More disaster cache supplies are needed at both cache sites.

Other Preparedness Activities: The school district partners with local emergency service agencies to provide regular Emergency Preparedness Fairs in Lincoln City. They also participate in tabletop and full-scale exercises such as tsunami drills, active shooter exercises, hazardous materials spills, and more. Several years ago they collaborated with community partners and coordinated a citywide tsunami drill. A portion of Taft High School was activated as a Red Cross Shelter, and the City & Fire set up a mobile command post at Taft HS. In addition, a Coast Guard Helicopter practiced landing on the field.

Partner Organizations for Lincoln City Schools

- | | |
|-------------------------------------|--|
| City of Lincoln City | American Red Cross |
| Lincoln City Police Department | Community Emergency Response Team |
| Lincoln City Emergency Management | National Weather Service |
| Lincoln City Parks & Rec. | First Student Bus Company |
| Lincoln County Sheriff’s Office | Sodexo Nutrition & Custodial Services |
| Oregon State Police | Linn Benton Lincoln ESD Early Intervention |
| North Lincoln Fire & Rescue | Lincoln County Health & Human Services |
| Depoe Bay Fire & Rescue | School-Based Health Centers |
| Samaritan North Lincoln Hospital | U.S. Coast Guard Stations Depoe Bay and North Bend |
| Pac West Ambulance | |
| Lincoln County Emergency Management | |

Newport (West Area)

Table LCSD-5 shows schools and support facilities within Newport. These four schools serve approximately 2,100 children from a large geographic region from Otter Rock/Hwy 101 in the North, to several miles up Hwy 20 to the East, and down to Seal Rock/Hwy 101 to the South (Map LCSD-1). Many students have variances to attend Newport schools and self-transport from all over Lincoln County to Newport schools.

Table LCSD-5 Newport Schools & Support Facilities

School/Facility Name	Address
Yaquina View Elementary School (pK-2)	351 SE Harney St
Sam Case Elementary School (3-5)	459 NE 12th St.
Early Childhood Center (pre)	420 NE 12th St
Newport Middle School (6-8)	825 NE 7 th St
Newport High School – East (9-12)	322 NE Eads St
Newport High School – West (9-12)	311 NE Eads St
The Teaching & Learning Center (District Offices)	1212 NE Fogarty St
The Compass Center for Youth & Families (Offices)	459 SW Coast Hwy

Yaquina View Elementary School (YVE) serves students in grades pK-2 and was built in 1961 and has had at least four additions since that time. YVE is in the middle of the city, just off Hwy 20 and on a hill above the Bayfront. Yaquina View School was officially closed as a school several years ago due to budget cuts. It was subsequently reopened and fully occupied with a variety of services: preschool, alternative high school, early intervention, homeless literacy program, and various district services. It was reopened as a kindergarten through grade 2 school. Information on the school’s estimated seismic resistance and collapse potential, determined by DOGAMI in 2007, is provided [here](#). Since the 2020 NHMP, seismic rehabilitation grants were awarded, and the oldest part of the school was retrofitted (SRGP 2021, \$2,493,600). A SRGP grant was also awarded to retrofit the classroom wing of this school (SRGP 2025, \$2,493,860). Seismic rehabilitation funds are still needed to strengthen the rest of this school and reduce the risk of injury and loss of life in an earthquake.

This school is located at the top of the hill leading to the bayfront (Yaquina Bay) and is bordered on two sides by significant mapped landslide areas on DOGAMI’s current SLIDO map. This school has been designated as a “Temporary Tsunami Assembly Area” on DOGAMI’s new Tsunami Map of the area. Yaquina View Elementary School, along with all LCSD schools, are designated Red Cross Community Shelters. LCSD has a written agreement with the Red Cross for the use of their schools in disaster situations. They also have a 3-part Overnight Sheltering guide that describes how the school can shelter students, how the Red Cross shelters the community, and how to safely conduct a dual sheltering operation. This school does not have a generator which is a limiting factor. At the time of the last NHMP, there was no disaster cache supply located here to support shelter students, staff, or the community. Since then, LCSD added a supply cache of supplies, a greenhouse, and a school garden. The covered play shed was removed, and a new gym was built at this school since the last NHMP update.

Yaquina View Elementary



Sam Case Elementary School (SCE) serves students in grades 3-5 and was built in 1958. The Early Childhood Center (ECC) is operated by the Linn Benton Lincoln Educational Service District and provides services to preschool age children. SCE and ECC are divided by a busy public street: 12th Street. Information on the school’s estimated seismic resistance and collapse potential, determined by DOGAMI in 2007, is provided [here](#). Prior to the 2015 NHMP, Newport Fire Department expressed interest in partnering with the School District so that in a natural disaster they could take over ECC and convert it into their command center, since the fire department’s main station was considered likely to collapse. Since the 2015 NHMP, both the school district (SRGP 2015-2017 Phase II, \$1,498,424) and the fire department (SRGP 2013-2014, \$1,491,223) received seismic rehabilitation grants and both Sam Case Elementary School and Newport Main Fire Station are seismically strengthened. As such, the fire department no longer needs to use the ECC as their command center during a seismic event. SCE has an arrangement with the Presbyterian Church on 12th Street for the use of its church in case an off-campus evacuation is necessary.

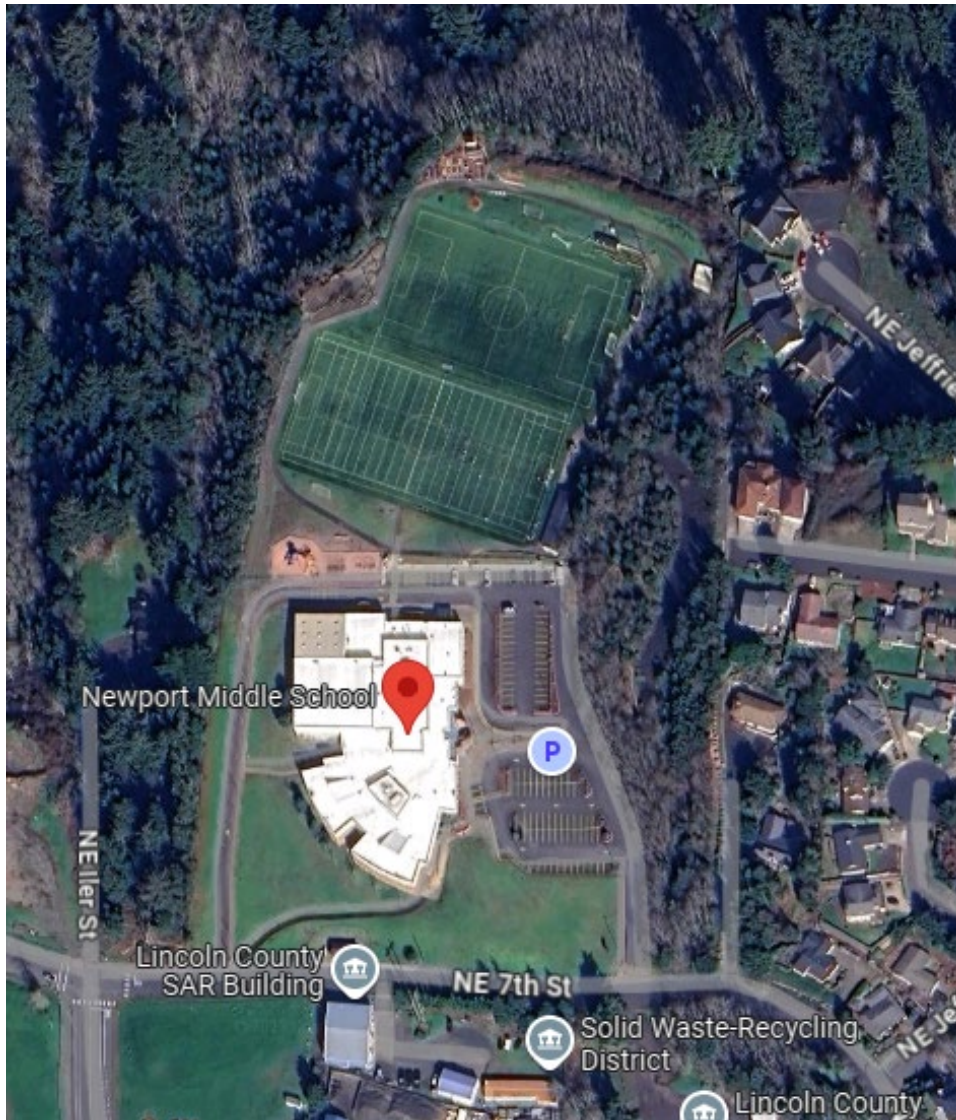
At the time of the 2020 NHMP, there was no disaster cache supply located here to support shelter students, staff, or the community. Since then, LCSD added a supply cache of supplies and the fire department added their own cache of supplies, they also added a greenhouse, and a school garden. Sam Case Elementary School, along with all LCSD schools, are designated Red Cross Community Shelters. LCSD has a written agreement with the Red Cross for the use of their schools in disaster situations. They also have a 3-part Overnight Sheltering guide that describes how the school can shelter students, how the Red Cross shelters the community, and how to safely conduct a dual sheltering operation. However, this school does not have a generator, which is a limiting factor. Further, this school is flanked on the north and east sides by dense forest and is a high risk of wind damage and wildfire damage. In fact, since the last NHMP update, trees have fallen onto Sam Case Elementary School on at least two occasions.

Sam Case Elementary School & Early Childhood Center



Newport Middle School (NMS) serves students in grades 6-8 and was built in 1998. It also houses an alternative middle school called “Future Bound.” NMS is nestled up next to a dense, forest area to the north and west, making it vulnerable to wildfires. The hill bordering the east side of the school and parking lot had a significant slide on it a few years ago due to heavy rain. Information on the school’s estimated seismic resistance and collapse potential, determined by DOGAMI in 2007, is provided [here](#). The school was built on a hill with fill and has multiple stories. There are already several cracks in the hallway floors. This could present challenges in a large Cascadia Subduction Zone earthquake. Nevertheless, NMS has been designated a Temporary Tsunami Assembly Area and is also the primary designated Red Cross school shelter in Newport. The School District has participated with multiple agencies in several different full-scale exercises at this school and have activated NMS as a Red Cross Shelter for these drills. Since the last NHMP, LCSD relocated a 2-shipping container disaster cache from an off-campus neighboring site and onto the NMS campus. They also added an additional container of supplies on campus.

Newport Middle School



Newport High School (NHS) serves students in grades 9-12. NHS has a Teen-parent childcare program and preschool. In addition, Lincoln County Health & Human Services operates a School-Based Health Center at the school. There is a young adult special education learning program called Education for Community Employment and Life (ECEL) for students through age 21.

The NHS East and West buildings share a campus that is divided by Eads Street. Several years ago, the school district and city worked together to get Eads Street closed to through-traffic during school hours. This significantly reduced the risk of student/pedestrian injuries but it doesn't keep the public from walking through campus at any time of the school day, increasing risk to students as they pass from class-to-class multiple times each day. The east side of Newport High's East Campus borders the County Fair Grounds.

Information on the school's estimated seismic resistance and collapse potential, determined by DOGAMI in 2007, is provided [here](#). A seismic rehabilitation grant was awarded and the gymnasium on the east campus was retrofitted (SRGP 2015-2017, Phase II, \$1,500,000). Seismic rehabilitation funds are still needed to strengthen other areas of these buildings and reduce the risk of injury and loss of life in an earthquake. This school does not have its own disaster supply cache and is expected to walk up to Newport Middle School to share the supplies stored there. A small disaster supply cache is needed at NHS for incidents when relocating to NMS does not make sense. Since the 2020 NHMP, the old grandstands were removed and replaced.

Newport High School East & West



District Offices & Support Facilities

We have two support facilities in Newport: 1) our District Offices, called the Teaching and Learning Center (TLC), and 2) the Compass Center for Youth & Families. These buildings are not in the tsunami zone and neither has had a Rapid Visual Screening assessment by DOGAMI.

The Teaching & Learning Center/District Offices (TLC): Since the 2015 NHMP, the School District acquired the City of Newport’s vacated public swimming pool that was built in 1965. In 2018 they remodeled it into a two-story office and training building with a basement for storage. It now serves as the main District Office and professional development center. On the north and east sides and partially on the south side, TLC is nestled up against a forest and canyon area called “Forest Park.” To the west, a public street separates TLC from Sam Case Elementary School. After doing earthquake drills at TLC, the School District is concerned about getting out of the building and to a safe evacuation assembly area after an earthquake. There are power poles/lines to the west and south. There is a dense forest/canyon to the north and east, part of this forest/canyon is in the tsunami zone, and the risk of trees falling and/or landslides is also a concern. Further, the wildfire and severe wind hazard is of concern at this facility due to its immediate proximity to a dense wooded area. With this acquisition came the designation of two spaces in the building as a Primary and Secondary Emergency Operations Center. This facility needs a generator, an EOC plan, EOC equipment and supplies.

District Offices/Teaching & Learning Center (TLC)



The **Compass Center for Youth & Families** was the former location of the School District offices. This building currently houses additional district staff offices. The Compass Center is a 1937, concrete, three-story building and there is concern about safety during an earthquake. The two-story garage structure is aging, and the entire building needs seismic rehabilitation, including the demolition of the two-story garage structure. There is no generator here and there are no disaster supplies stored here.

The Compass Center for Youth & Families



Transportation/School Buses: The School District does not store school buses in Newport. Regional buses are stored at the main bus barn in Toledo.

Natural Hazard Preparedness and Mitigation Activities

- **FEMA Post-Disaster Mitigation Grant:** In 2023, the School District received a Post Fire Mitigation Grant of approximately \$1,400,000 for ignition resistant construction on six of our school sites to help prevent loss of life and property from wildfires. Schools in the grant include: Arcadia School (Toledo), **Newport Middle School, Newport High School East, Newport High School West**, Crestview Heights School (Waldport), and Waldport High School.
- **Generator:** Newport Middle School has an old and obsolete very small generator with 50-gallon tank of diesel fuel. It doesn't power up much of the school and it often doesn't work. In 2025, we were awarded a Planning, Infrastructure, and Economic Revitalization (PIER) Grant to purchase a new full-school generator and 2,500 gallon above-ground fuel tank. The work has not yet started.

- **Earthquake/Tsunami Hazard:** None of the Newport schools are in the tsunami hazard zone. However, in the event of a large Cascadia Subduction Zone earthquake and tsunami, access to all Newport schools will be unavailable because they will be cut off from all major transportation routes due to tsunami inundation at: Hwy 101 South at the Yaquina Bay Bridge, Hwy 101 North near Walmart, and Hwy 20 to the East. Current building codes are for life-safety only and do not provide for re-occupancy after a Cascadia Subduction Zone Earthquake. Scientists expect roads and bridges to have significant damage from a local earthquake and tsunami. The School District expects all basic infrastructure services to be destroyed/damaged by the earthquake. In anticipation of this, we will need to be prepared to do our own search & rescue, provide medical support, expect delayed family reunifications, and provide for the basic needs of students & staff for many days and possibly several weeks before help may arrive.
- **Teen CERT:** Newport High School had a Teen CERT program for one year during the 2010/11 school year but had to discontinue it due to budget cuts. Since the 2015 NHMP, the school has reinstated the Teen CERT semester class starting in the 2018/19 school year. In this semester long Teen CERT class students learn about hazards that may impact their area and are taught how to be rescuers in a large disaster when professional rescuers are not readily available or are overwhelmed. These students will be the first responders at both NHS & NMS schools if a large Cascadia Subduction Zone earthquake occurs when school is in session. Reinstating the Teen CERT program made the school eligible for funds to purchase a Teen CERT Disaster Response Cache located in wind and watertight shipping containers in the NHS parking lot. Newport Fire & Rescue and the CERTs of Lincoln County assist with this course.
- **Disaster Supply Caches:** In 2013, initial Disaster Caches were established across the street from Newport Middle School in the County's secure Marine Lot and at the South Beach Oregon Coast Community College Campus. The project was a partnership between the County, School District, City of Newport, Newport Fire, Oregon Coast Community College, OSU Hatfield Marine Science Center, Oregon Coast Aquarium, and the Oregon Department of Fish and Wildlife. The caches have a limited supply of tents, water, and some basic survival supplies. An additional container is needed to store additional supplies. Since the 2015 NHMP, the disaster cache was relocated to another county field near the schools, and the School District partnered with the City of Newport to add more tents and survival food supplies to the cache. These caches are designated for use by the schools if a disaster occurs when school is in session. Otherwise, they will be available for city and fire to assist with the basic needs of the community in a disaster. Since the 2020 NHMP, the containers were moved to the Newport Middle School campus and an additional container of supplies was added. Additional supplies are needed, including but not limited to cots, tents, and more food.
- **Other Preparedness Activities:** The school district partners with local emergency service agencies to provide regular Emergency Preparedness Fairs in Newport. They also participate in tabletop and full-scale exercises such as tsunami drills, active shooter exercises, hazardous materials spills, and more. In fact, several years ago they collaborated with our community partners and a portion of Newport Middle School was activated as a Red Cross Shelter.

Partner Organizations for Newport Schools

City of Newport	Community Emergency Response Team
Newport Police Department	Oregon Coast Community College
Newport Emergency Management	National Weather Service
Lincoln County Sheriff's Office	First Student Bus Company
Oregon State Police	Sodexo Nutrition & Custodial Services
Newport Fire & Rescue	Linn Benton Lincoln ESD Early Intervention
Samaritan Pacific Communities Hospital	Lincoln County Health & Human Services
Pac West Ambulance	School-Based Health Centers
Lincoln County Emergency Management	U.S. Coast Guard Station Yaquina Bay and North Bend
American Red Cross	

Toledo (East Area)

Table LCSD-6 shows schools and support facilities within Toledo. These schools serve 730 children from an expansive, rural, geographic region in the east section of Lincoln County off Hwy 20: including Toledo, Siletz, Logsden, Eddyville, Blodgett, and the surrounding unincorporated areas of Lincoln County (Map LCSD-1). Some of the children who live in this region attend the Siletz or Eddyville Charter School, but 730 children attend the Toledo schools. The Toledo Schools are at higher risk for winter snow and ice emergencies due to their higher elevation/inland location than our other coastal schools. Because Toledo schools are bordered by forest lands, they are at higher risk for wildfires, wild animals wandering onto campus, and errant gun shots, due to target shooting nearby.

Table LCSD-6 Toledo Schools & Support Facilities

School/Facility Name	Address
Toledo Elementary School	600 SE Sturdevant Rd, Toledo, OR
Toledo Jr/Sr High School	1800 NE Sturdevant Rd, Toledo, OR
Arcadia School (district offices & nutrition services)	1811 NE Arcadia Dr, Toledo, OR
Burgess Campus: Facilities & Maintenance, Bus Barn/Transportation, Custodial Services	295 NE Burgess Rd, Toledo, OR

Continued next page

Toledo Elementary School (TOES) serves students in grades pK-6 and was built in 1987. The school is in the City of Toledo and is served by Toledo Police Department and a shared School Resource Officer from the Sheriff's Office. The school district has a preschool program for children at TOES. TOES is bordered by forestland on most sides and Sturdevant Road to the west, which is in the tsunami zone. Information on the school's estimated seismic resistance and collapse potential, determined by DOGAMI in 2007, is provided [here](#). Seismic rehabilitation is needed. A classroom wing addition along with a new office area and cafeteria were added in 2015 with a construction bond. This school has been designated as a "Temporary Tsunami Assembly Area" on DOGAMI's new Tsunami Map of the area. It is also the primary designated Red Cross Emergency Shelter for this area. The older portion of the building has some cracks in the floor and there is some concern of landslide hazards during an earthquake. This school is at high risk for wildfire due to its location and surrounding dense forest areas and trees. A disaster supply cache is located at this site, and since the 2020 NHMP, an additional container of supplies was added. Additional supplies are needed, including but not limited to cots, tents, and more food.

Toledo Elementary School



Toledo Jr/Sr High School (TOHS) serves students in grades p7-12. The school is outside City limits in an unincorporated area of the County and is served by Lincoln County Sheriff's Office and East Lincoln County Fire. Toledo Jr/Sr High is bordered by dense forestland on most sides and Sturdevant Road to the west, which is in the tsunami zone. Lincoln County Health & Human Services operates a School-Based Health Center at the school. The school also has a HELP Center (Homeless Education and Literacy Program) for families/students experiencing homelessness.

Built in 1955, TOHS is on a steep hill with multiple floor levels. Information on the school's estimated seismic resistance and collapse potential, determined by DOGAMI in 2007, is provided [here](#). A more extensive seismic and geologic study is needed at this site to account for the multiple and irregular levels and additions. In 2014, the School District received a grant and the gym area of TOHS was seismically rehabilitated (SRGP 2014, \$1,500,000). The school also has three separate classroom structures up the hill from the main building. One is an industrial arts building and the other houses a computer lab. This campus is at high risk of wildfires and wind damage due to its geographic location next to dense forest areas. In fact, since the 2020 NHMP, tree damage was reported on a neighboring structure and we have since performed tree and defensive space mitigation on the north side of the school campus.

Toledo Jr/Sr High School



Continued next page

District Offices & Support Facilities

Arcadia School: Arcadia school is used for several district support functions, including nutrition services, records, adaptive PE, and more. Arcadia school was not included in the DOGAMI Rapid Visual Screening assessment since it was not in service as a school at that time. It needs a seismic assessment. It is not a traditional school at this time but may be reopened as a functioning school soon. It is surrounded by trees on most sides and is at risk of damage due to wildfires and wind. This school is currently without a disaster supply cache or a generator; both are identified as critical needs. Since the 2020 NHMP, we performed defensive space mitigation at this site and received a FEMA Grant to perform significant ignition-resistant construction, which was completed in 2024.

Arcadia School



Continued next page

Burgess Campus: The School District’s “Burgess Campus” houses the main Facilities & Maintenance Department, the main Bus Company and Bus Barn, and Custodial Services. The campus is located adjacent to, and shares a parking lot with, the Toledo Fire Department.

Burgess Complex (Facilities & Maintenance, Bus Barn/Transportation, Food & Custodial Services)



Facilities & Maintenance: Includes offices and a maintenance shop for the entire Lincoln County School District. Most of the School District vehicles are housed here. Built next to a canyon, this site has a history of slide damage. During a 2012 winter storm, significant slide damage occurred at this complex. The School District received FEMA disaster assistance for the repairs at this site. The site is surrounded by dense trees and is at elevated risk for wildfire.

The School District has had discussions with the Toledo Fire Department about the School District’s big freezer full of food at this site. In a disaster situation, the fire district and city may need to use this food for community needs. The freezer could also be used as a morgue if necessary, in a disaster situation. When the Fire Station was built, a generator was installed, and conduit was placed to connect the Fire Department generator with the school district’s freezer. Since the 2020 NHMP, some work was done on this, however, the project was not completed due to a lack of funding and still needs a significant amount to work (wires, breakers, etc.), to be operational.

This site needs redundant backup communications as it could be used as a backup EOC for the district. It is also in need of reliable power. There is no disaster cache at this site and one is needed for staff.

Buses & Bus Barn: The main bus dispatch center for the district is located at this site as are school buses and the bus barn for Toledo & Newport schools. The remaining buses are in Lincoln City and Waldport. If these assets survive a Cascadia earthquake (no liquefaction,

landslides, fire/explosion, etc.), they will be a great resource of shelter, fuel, security, and communications. Fuel will be necessary for big equipment to clear roads, for fire trucks and police cars to operate, etc.

Natural Hazard Preparedness and Mitigation Activities

FEMA Post-Disaster Mitigation Grant: In 2023, the School District received a Post Fire Mitigation Grant of approximately \$1,400,000 for ignition resistant construction on six of our school sites to help prevent loss of life and property from wildfires. Schools in the grant include **Arcadia School (Toledo)**, Newport Middle School, Newport High School East, Newport High School West, Crestview Heights School (Waldport), and Waldport High School.

Generator: Toledo Elementary School is equipped with a generator and is the primary shelter facility for the east area. The generator is powered by natural gas, which could be problematic in an earthquake. The School District would like to explore converting this to a diesel generator and expanding it to a full-school generator. Toledo Jr/Sr High needs a generator, as does Arcadia School and the Burgess complex.

Earthquake/Tsunami Hazard: Right along the Oregon coast lies the Cascadia Subduction Zone, capable of producing magnitude 8+ earthquakes with several minutes of intense shaking & destructive tsunami waves for 10+ hours. Bridge failures, landslides & tsunami inundation will cut off normal transportation routes and cause families to be separated. LCSD will need to survive for days and possibly weeks without normal infrastructure and services. Current building codes are for life-safety only and do not provide for re-occupancy after a Cascadia Subduction Zone Earthquake. Scientists anticipate that roads and bridges will sustain significant damage from a local earthquake and tsunami. It is also expected that all basic infrastructure services will be destroyed or severely damaged. In preparation for such an event, the School District must be ready to conduct its own search and rescue operations, provide medical support, manage delayed family reunifications, and meet the basic needs of students and staff for an extended period—potentially several days or even weeks—before external assistance becomes available.

DOGAMI's Tsunami Inundation Maps for the Toledo area expose the potential for tsunami inundation onto Sturdevant Road which will cut off both Toledo Schools from immediate emergency response capabilities. This underscores the reality that it will take time to provide rescue and support services to Toledo schools. The Fire Department has informed the School District that as tsunami water recedes, they will work to get to TOES after an earthquake/tsunami scenario, but it will take time. They do not plan to come to Toledo Jr/Sr High due to other competing needs of the community. They have requested that students/staff from TOHS take a trail in the woods above the school over to TOES. Since the 2015 NHMP, a team from the school district and Sheriff's Office assessed the trail on the mountain behind TOHS and determined that the trail is on a steep ridge and dead ends at a heavily wooded/brushed area that is not passable. There is also a concern for landslides in this area. Because of this the School District is developing capacity at each school to be prepared to meet the needs of the students and staff at each campus since they will be isolated from each other.

Teen CERT: Toledo High School has a robust, semester long Teen CERT class in which students learn about hazards that may impact our area and are taught how to be rescuers in a large disaster when professional rescuers are not readily available or are overwhelmed. Since the 2009/10 school year, over 100 TOHS students have taken the Teen CERT semester course. Toledo Fire & Rescue and CERTs of Lincoln County assist with this course. Due to the certain isolation of Toledo schools after a Cascadia earthquake due to expected bridge damage, and landslides, these students will be the first responders, and probably only responders. They will be cut off from Toledo Elementary School due to tsunami inundation on Sturdevant Road (which divides the schools). TOES is an elementary school and does not have Teen CERT students. As such, the School District would like to offer CERT training to Toledo Elementary staff during non-school hours, and grant funding is needed for a training stipend and CERT kits to be housed at the disaster cache at the school.

Disaster Supply Caches: In 2014, the School District partnered with the City of Toledo, Toledo Fire, and the Lincoln County Commissioners and established a Disaster Cache of emergency survival supplies for 700 people at Toledo Elementary School (TOES). In 2019, they partnered again to develop a smaller cache of disaster supplies at Toledo Jr/Sr High (TOHS). This cache project is completed but more supplies are needed than was funded. Since the 2020 NHMP, an additional container of supplies was installed at TOES and more supplies were added to TOHS.

Other Preparedness Activities: The school district partners with local emergency service agencies by participating in tabletop and full-scale exercises such as earthquake drills, wildland fire exercises, hazardous materials spills, and more. Several years ago, they collaborated with community partners to conduct a citywide earthquake drill and a portion of Toledo Elementary was activated as an evacuation site. In 2019, they participated in a countywide wildfire tabletop exercise that involved the simulated evacuation of both Toledo schools.

Partner Organizations for Toledo Schools

City of Toledo	American Red Cross
Toledo Police Department	Community Emergency Response Team
Lincoln County Sheriff's Office	National Weather Service
Oregon State Police	First Student Bus Company
Toledo Fire & Rescue	Sodexo Nutrition & Custodial Services
Samaritan Pacific Communities Hospital	Lincoln County Health & Human Services
Pac West Ambulance	School-Based Health Centers
Lincoln County Emergency Management	

Waldport (South Area)

Table LCSD-7 shows schools and support facilities within Waldport. These schools serve approximately 625 children from a large geographic region from Yachats in the south (Hwy 101), to several miles up the Alsea Hwy (Hwy 34) to the East, and North off of Hwy 101 to Seal Rock (Map LCSD-1). This campus is bordered on all sides by dense trees (one side borders Crestline Drive and then trees). The campus is not fenced. This campus is at a higher risk for wildfires as well as wild animals wandering onto campus.

Table LCSD-7 Waldport Schools & Support Facilities

School/Facility Name	Address
Crestview Heights School	2750 Crestline Dr, Waldport, OR
Waldport High School	3000 Crestline Dr, Waldport, OR
Waldport Bus Barn	3000 Crestline Dr, Waldport, OR

Crestview Heights School (CVH) serves students in grades pK-8. Throughout the school day, middle school students migrate back and forth between classes in the Crestview and Waldport High School buildings. CVH also has an early childhood program with a preschool.

Waldport High School (WHS) serves students in grades 9-12. In addition, Lincoln County Health & Human Services operates a School-Based Health Center at the school. The school also has a HELP Center (Homeless Education and Literacy Program) for our families/students experiencing homelessness. This campus is flanked by dense forest on its east and west sides. Trees also line the north side. The proximity to heavily wooded area makes the campus particularly vulnerable to wildfire.

A disaster cache is located by the track and field; an additional container of supplies was added since the 2020 NHMP. These schools also share a diesel generator with limited support to the school. These schools will be isolated during many type of disasters and need redundant backup communication tools/equipment.

Crestview Heights School & Waldport High School (and OCCC and Bus Barn)



Support Facilities

Buses & Bus Barn: School buses and the bus barn for both Waldport schools are housed on the CVH/WHS campus. Along with the buses and small bus barn building, there is also a 1,000 gallon, above ground, tank of diesel on site for the school buses. If these assets survive a Cascadia earthquake (no liquefaction, landslides, fire/explosion, etc.), they will be a great resource of shelter, fuel, security, and communications.

Oregon Coast Community College has a small one-building school on the SE corner of this school campus. OCCC partners with us to host our Teen CERT training exercises each semester. In addition, the Red Cross currently has a trailer with limited shelter supplies stored in the OCCC parking lot.

Natural Hazard Preparedness and Mitigation Activities

FEMA Post-Disaster Mitigation Grant: In 2023, the School District received a Post Fire Mitigation Grant of approximately \$1,400,000 for ignition resistant construction on six of our school sites to help prevent loss of life and property from wildfires. Schools in the grant include Arcadia School (Toledo), Newport Middle School, Newport High School East, Newport High School West, **Crestview Heights School (Waldport), and Waldport High School.**

Generator: Waldport High School is equipped with a generator. There is a 4,000 gallon, below ground, tank of diesel which operates the heating system of the school as well as a limited generator support for the other areas of the school. A full-school generator is needed for both schools.

Freezer: The city, Red Cross, and school district have all identified a need for a large freezer at Crestview Heights School. The current freezer capacity is very limited and doesn't allow the school district to store and rotate much food. A larger freezer would allow for larger amounts of food storage which would meet a need for food in a disaster. The School District would like to get a freezer the same size as Taft High School's freezer, which stores a month's worth of groceries: 12 x 16, 8' 9" inside height.

Earthquake/Tsunami Preparedness History: During the last several years, significant attention has been directed to Waldport Schools about earthquake and tsunami preparedness. Previously, all Waldport schools were in the tsunami inundation zone. Although the schools did tsunami drills, there was not a viable tsunami escape route for these students and staff members. As such, the schools were vacated and rebuilt outside of the tsunami zone.

- A new school (Crestview Heights, CHS) was built out of the tsunami zone to house all elementary school students.
- Waldport Middle School was closed, and students were moved out of the tsunami zone and integrated into the Crestview Heights School, making that school a kindergarten through grade 8 school.
- The School District partnered with the City of Waldport, Central Coast Fire & Rescue and the County Commissioners to establish a disaster cache of basic survival supplies on the Crestview Heights School campus. Angel Job Corps Students helped to build the structure housing the cache of supplies. This school also became the designated shelter & command center for the entire city of Waldport in case of a disaster.

- The School District collaborated with community partners and conducted a citywide tsunami drill. A portion of Crestview Heights School was activated as a Red Cross Shelter, Waldport High School Students evacuated to CHS, and the City & Fire Department (Central Coast Fire & Rescue District) set up a command post at CHS. A Coast Guard Helicopter practiced landing on the field.
- The School District passed a bond measure which included building a new high school in Waldport, out of the tsunami zone. The new high school opened for high school students in August 2013. The old high school was then closed.
- The School District received Pre-Disaster Mitigation Grant from FEMA to demolish the old Waldport High School (WHS) that was in the tsunami zone and convert the land into open space. Funds from the grant were also used to demolish most of the old Waldport Middle School, except for the gymnasium (additional funds from the grant were used to demolish the old Taft Elementary School, in the tsunami zone in Lincoln City).
- Since the 2015 NHMP, the City of Waldport has acquired the old WHS Open Space site.

Earthquake/Tsunami Hazard: All Waldport schools are now located outside the tsunami hazard zone. However, in the event of an earthquake and tsunami, access to these schools is expected to be severely limited due to tsunami inundation along Highway 101 (both north and south), Highway 34 from the east, and predicted bridge damage. It is anticipated that all basic infrastructure services will be destroyed or significantly impaired by the earthquake. In preparation for this scenario, the School District must be equipped to conduct its own search and rescue operations, provide medical support, manage delayed family reunifications, and meet the essential needs of students and staff for an extended period—potentially several days or weeks—before external assistance becomes available. Despite the presence of newer school facilities in Waldport, current building codes are designed for life-safety only and do not meet reoccupancy standards. Therefore, the School District does not anticipate being able to reoccupy school buildings following a Cascadia Subduction Zone earthquake.

Teen CERT: Waldport High School has a robust, semester long Teen CERT class in which students learn about hazards that may impact our area and are taught how to be rescuers in a large disaster when professional rescuers are not readily available or are overwhelmed. Since the 2009/10 school year, over 230 WHS students have taken the Teen CERT semester course. Central Coast Fire & Rescue, Seal Rock Fire & Rescue, and CERTs of Lincoln County assist with this course. Due to the certain isolation of our Waldport schools after a Cascadia earthquake due to expected bridge damage, and area landslides, and because the fire department is in the tsunami zone without a viable escape route, these students will likely be the first responders, and potentially the only responders for CVH & WHS and the Community College for a time, if a large Cascadia Subduction Zone earthquake occurs when school is in session. Because of this, the School District would like to offer CERT training to Waldport staff during non-school hours. Funding is needed for training stipends and for teacher CERT kits that would be stored outside the school in a shipping container, for easy access after an earthquake.

Disaster Supply Caches: The original masonry structure built for the disaster cache was demolished when the new school was built, so a new building was constructed. Since the

2015 NHMP the School District partnered with the City of Waldport and Central Coast Fire to add more supplies to the cache. The School District did not have a formal MOU in place and there have been some misunderstandings about where the supplies are to be kept and how to distribute them. A formal MOU is needed as well as additional disaster supplies. Since the 2020 NHMP, the storage building proved to be accessible to rodents, so two steel shipping containers were purchased to store the disaster supplies in. The Fire Department also is housing one of their shipping containers of fire disaster supplies on campus.

Partner Organizations for Waldport Schools

- | | |
|--|--|
| City of Waldport | Oregon Coast Community College |
| Lincoln County Sheriff’s Office | American Red Cross |
| Oregon State Police | Community Emergency Response Team |
| Central Coast Fire & Rescue | National Weather Service |
| Seal Rock Fire & Rescue | First Student Bus Company |
| Yachats Fire & Rescue | Sodexo Nutrition & Custodial Services |
| Samaritan Pacific Communities Hospital | Linn Benton Lincoln ESD Early Intervention |
| Pac West Ambulance | Lincoln County Health & Human Services |
| Lincoln County Emergency Management | School-Based Health Centers |

Attachment A:

Action Item Status and Forms

Table LCSD-8 is an accounting of the status (complete or not complete) and major changes to actions since the previous NHMP. All actions were renumbered in this update to be consistent with other jurisdictions that are participating in the multi-jurisdictional NHMP. Actions identified as still relevant are included in the updated action plan (Table LCSD-1).

Previous NHMP Actions that are Complete:

LCSD #3: *“Relocate the School District’s maintenance building out of the Tsunami Inundation Zone.”* A new maintenance building was constructed at the 6110 NE Devils Lake Blvd property and the old maintenance building was decommissioned and sold to the City of Lincoln City.

Previous NHMP Actions that are Not Complete and No Longer Relevant:

None

Table LCSD-8 Status of All Hazard Mitigation Actions in the Previous Plan

2020 Action Item	2025 Action Item	Status	Still Relevant? (Yes/No)
LCSD #1	#1	Not Complete	Yes
LCSD #2	#2	Not Complete	Yes
LCSD #3	-	Complete	-
LCSD #4	#3	Not Complete	Yes
LCSD #5	#4	Not Complete	Yes
LCSD #6	#5	Not Complete	Yes
LCSD #7	#6	Not Complete	Yes
LCSD #8	#7	Not Complete	Yes
LCSD #9	#8	Not Complete	Yes
-	#9	New	-
-	#10	New	-

Each action item has a corresponding action item worksheet describing the activity, identifying the rationale for the project, identifying potential ideas for implementation, and assigning coordinating and partner organizations. The action item worksheets can assist the community in pre-packaging potential projects for grant funding. The worksheet components are described below.

ALIGNMENT WITH EXISTING PLANS/POLICIES

The School District NHMP includes a range of action items that, when implemented, will reduce loss from hazard events in the School District. Existing programs and other resources that might be used to implement these action items are identified. To the extent possible, the School District will work to incorporate the recommended mitigation action items into existing plans, programs, and procedures. Each action item identifies related existing plans and policies.

STATUS/RATIONALE FOR PROPOSED ACTION ITEM

Action items should be fact-based and tied directly to issues or needs identified throughout the planning process. Action items can be developed at any time during the planning process and can come from several sources, including participants in the planning process, noted deficiencies in local capability, or issues identified through the risk assessment. The rationale for proposed action items is based on the information documented in this addendum and within Volume I, Section 2. The worksheet provides information on the activities that have occurred since the previous plan for each action item.

IDEAS FOR IMPLEMENTATION

The ideas for implementation offer a transition from theory to practice and serve as a starting point for this plan. This component of the action item is dynamic, since some ideas may prove to not be feasible, and new ideas may be added during the plan maintenance process. Ideas for implementation include such things as collaboration with relevant organizations, grant programs, tax incentives, human resources, education and outreach, research, and physical manipulation of buildings and infrastructure.

COORDINATING (LEAD) ORGANIZATION:

The coordinating organization is the public agency with the regulatory responsibility to address natural hazards, or that is willing and able to organize resources, find appropriate funding, or oversee activity implementation, monitoring and evaluation.

INTERNAL AND EXTERNAL PARTNERS:

The internal and external partner organizations listed in the Action Item Worksheets are potential partners recommended by the project steering committee but not necessarily contacted during the development of the plan. The coordinating organization should contact the identified partner organizations to see if they are capable of and interested in participating. This initial contact is also to gain a commitment of time and/or resources toward completion of the action items.

Internal partner organizations are departments within the School District or other participating jurisdiction that may be able to assist in the implementation of action items by providing relevant resources to the coordinating organization.

External partner organizations can assist the coordinating organization in implementing the action items in various functions and may include local, regional, state, or federal agencies, as well as local and regional public and private sector organizations.

PLAN GOALS ADDRESSED:

The plan goals addressed by each action item are identified as a means for monitoring and evaluating how well the mitigation plan is achieving its goals, following implementation.

TIMELINE:

All broad scale action items have been determined to be ongoing, as opposed to short (1 to 4 years), medium (5-10 years), or long (10 or more years). This is because the action items are broad ideas, and although actions may be implemented to address the broad ideas, the efforts should be ongoing.

POTENTIAL FUNDING SOURCE

Where possible potential funding sources have been identified. Example funding sources may include: Federal Hazard Mitigation Assistance programs, state funding sources such as the Oregon Seismic Rehabilitation Grant Program, or local funding sources such as capital improvement or general funds. An action item may include several potential funding sources.

ESTIMATED COST

A rough estimate of the cost for implementing each action item is included. Costs are shown in general categories showing low, medium, or high cost. The estimated cost for each category is outlined below:

Low - Less than \$50,000

Medium - \$50,000 – \$499,999

High - Between \$500,000-\$5 million

Very High – More than \$5 million

STATUS

The 2025 status of each action item is indicated: new actions were developed in 2025, ongoing actions are those carried over from the previous plan, and deferred actions are those that are carried over from the previous plan but had limited or no activity.

Mitigation Action #1: Seismic Resilience

(What do we want to do?)	Alignment with Plan Goals:				High Priority Action Item?
Seismically assess and retrofit vulnerable facilities and infrastructure to increase their resiliency to seismic hazards. Consider both structural and non-structural retrofit options.	<input checked="" type="checkbox"/> 1	<input checked="" type="checkbox"/> 2	<input checked="" type="checkbox"/> 3	<input type="checkbox"/> 4	<input checked="" type="checkbox"/> Yes
	<input checked="" type="checkbox"/> 5	<input type="checkbox"/> 6	<input type="checkbox"/> 7	<input type="checkbox"/> 8	
	<input type="checkbox"/> 9	<input checked="" type="checkbox"/> 10	<input type="checkbox"/> 11		

Alignment with Existing Plans/Policies:

Capital Improvement Plan, Long Range Facility Planning Report

Rationale for Proposal (Why is this important?):

"For governments, less damage to government structures will mean continued services and normal processes or at least minimal interruptions. If government structures come through an earthquake with little or no damage, agencies will not have to relocate services, and public officials can respond to the immediate and long-term demands placed on them by the event. In short, seismic rehabilitation as a pre-event mitigation strategy actually will improve post-event response by lessening life loss, injury, damage, and disruption." Source: FEMA. Chapter 1: Why Seismic Rehabilitation?

DOGAMI conducted a seismic needs assessment for public school buildings. Buildings were ranked for the "probability of collapse" due to the maximum possible earthquake for any given area. Table LCS-3 lists the vulnerable school district buildings, it also indicates which facilities have been seismically strengthened.

Priority projects include the following:

- Seismic retrofit of the classroom wing of Yaquina View Elementary School (Newport); The other half of the school was completed in 2023. Also consider options for upgrades necessary to provide service as a Temporary Tsunami Assembly Area.
- Seismic retrofit of Toledo Elementary School (Toledo). An application was submitted in 2024 for the gym. Address floor settlement and cracking.
- Perform an enhanced seismic assessment and perform a seismic retrofit, if deemed necessary, of Toledo Jr/Sr High School. The gym was complete (ca. 2014).
- Perform an enhanced seismic assessment and perform a seismic retrofit, if deemed necessary, of Taft 7-12 (Lincoln City). Also consider upgrades necessary to provide service as a Temporary Tsunami Assembly Area.
- Seismic assessment and potential retrofit, if deemed necessary, of Newport Middle School; also consider upgrades necessary to provide service as a Temporary Tsunami Assembly Area. Address structural and foundation issues at Newport Middle School.
- Seismic retrofit of Newport High School (Newport); East Campus Gym complete (SRGP 2015-2017)
- Seismic assessment and potential retrofit, if deemed necessary, of Newport Early Childhood Center.
- Seismic assessment and potential retrofit, if deemed necessary, of the TLC/District Offices (Newport), including the EOC locations.

Mitigation Action #1: Seismic Resilience

(Continued)

- Seismic assessment and potential retrofit, if deemed necessary, of Arcadia School (Toledo), retrofit as applicable.
- Seismic assessment and potential retrofit, if deemed necessary, of Crestview Heights School (Waldport). Also consider upgrades necessary to provide service as a Temporary Tsunami Assembly Area.

Ideas for Implementation

(How will it get done?):

Seismically assess school district buildings and infrastructure, determine which structures may be particularly vulnerable to earthquake damage.

Seek funding to retrofit and/or re-build structures.

Rehabilitate identified vulnerable schools, infrastructure, and other vulnerable buildings.

Action Status Report

2025 Update:

- Completed seismic strengthening of Taft Elementary School & Oceanlake Elementary School.
- Completed seismic strengthening of ½ of Yaquina Elementary School.
- Maintenance Building was relocated out of the tsunami hazard zone and built at the Holly Farm Bus Barn, north Lincoln City. No longer vulnerable to tsunamis.
- Replaced Grandstands at Newport High School.
- Received a TAP Grant (Spring 2025) to do an expanded seismic assessment at Toledo Jr/Sr High School.

2020 Update:

- Seismic strengthening of Taft Elementary School is underway and expected to be complete in 2020.
- Seismic strengthening of Oceanlake School is underway (grant received, currently in planning phase) and expected to be complete in 2021.
- Seismic strengthening of Sam Case Elementary is complete (2017).
- Seismic strengthening of Newport High east gym complete (2017).
- 2015 Update:
- Taft Elementary relocated (new location is in former Taft High/Middle School, which has a building with moderate collapse potential).
- Taft, Oceanlake, and Toledo schools supply caches installed.
- Seismic strengthening of the Toledo Jr/ Sr High School Gym is complete (2015).

Mitigation Action #1: Seismic Resilience

(Continued)

**Champion/
Responsible Organization:**

Facilities and Maintenance

Internal Partners:

Facilities Director, Safety Coordinator

External Partners:

Lincoln County, Lincoln City, Newport, Toledo,
Waldport, Oregon Emergency Management, DOGAMI,
IFA, SHPO

Potential Funding Sources:

Seismic Rehabilitation Grants (IFA), Local
Funding Resources (general fund),
grants

Estimated cost:

High

Timeline:

- Ongoing
- Short Term (1-4 years)
- Medium Term (4-10 years)
- Long-Term (10+ years)

Form Submitted by:

Lincoln County School District, revised 2020
(action previously in applicable city addenda)

Action Item Status:

Ongoing

Mitigation Action #2: North Lincoln City School

(What do we want to do?)	Alignment with Plan Goals:								High Priority Action Item?
Construct a new school in Lincoln City out of the Tsunami Inundation Zone.	<input checked="" type="checkbox"/> 1	<input checked="" type="checkbox"/> 2	<input checked="" type="checkbox"/> 3	<input type="checkbox"/> 4					
	<input checked="" type="checkbox"/> 5	<input type="checkbox"/> 6	<input type="checkbox"/> 7	<input type="checkbox"/> 8	<input checked="" type="checkbox"/> Yes				
	<input type="checkbox"/> 9	<input checked="" type="checkbox"/> 10	<input type="checkbox"/> 11						

Alignment with Existing Plans/Policies:

Capital Improvement Plan

Rationale for Proposal (Why is this important?):

The School District needs another school to meet the demands of current and projected occupancy. Further, a new school could replace the current Taft Elementary School facility since it is susceptible to earthquake damage since there have been at least six additions to the building. The Land has already been purchased (in north Lincoln City), but a bond is needed to fund the school.

Ideas for Implementation (How will it get done?):

Secure a bond for the construction of a new school in north Lincoln City (6110 NE Devils Lake Blvd).

Capitalize on grants and other funding opportunities to develop portions of the land to ready it for future construction.

Action Status Report

2025 Update:

- Although the school passed a bond in May 2025, the current enrollment figures didn't justify asking for this yet.

2020 Update:

- Land has been purchased in North Lincoln City to accommodate a new school.

Champion/

Responsible Organization:

Facilities and Maintenance

Internal Partners:

Facilities Director

External Partners:

Potential Funding Sources:

Local Funding Resources, bond

Estimated cost:

High

Timeline:

- Ongoing
- Short Term (1-4 years)
- Medium Term (4-10 years)
- Long-Term (10+ years)

Form Submitted by:

Lincoln County School District, 2020

Action Item Status:

Ongoing

Mitigation Action #3: Response and Supply Planning

(What do we want to do?)	Alignment with Plan Goals:				High Priority Action Item?
Develop disaster response plans, procure and stock emergency supplies on all school buses, and provide caches (food and emergency supplies) throughout the School District.	<input checked="" type="checkbox"/> 1	<input type="checkbox"/> 2	<input type="checkbox"/> 3	<input type="checkbox"/> 4	<input type="checkbox"/> Yes
	<input type="checkbox"/> 5	<input type="checkbox"/> 6	<input checked="" type="checkbox"/> 7	<input type="checkbox"/> 8	
	<input type="checkbox"/> 9	<input checked="" type="checkbox"/> 10	<input type="checkbox"/> 11		

Alignment with Existing Plans/Policies:

All Hazards Emergency Plan, Family Reunification Plan, Sheltering Plan, Disaster Cache Plan

Rationale for Proposal (Why is this important?):

The Disaster Mitigation Act of 2000 requires communities to identify actions and projects that reduce the effects of hazards on the community [201.6(c)(3)(ii)]

Lincoln County School District has a robust emergency operations plan but very minimal disaster response plans. In addition, while there are disaster caches at or near most schools that serve students and employees, two schools (TAES, NHS) and four support facilities (ARC, TLC, F/M, Holly Fm) do not have disaster caches yet, and the existing caches need additional supplies. Supplies are needed for our buses where there are long rural bus rides.

Lincoln County School District schools can serve as Red Cross emergency, as needed and when available. Having robust disaster caches at or near each school will support Red Cross Shelter Operations.

Additional Food storage and supplies, school gardens, and a Disaster Food Plan is needed for serving school and shelter populations during disasters, as well as how to protect our food supplies.

Ideas for Implementation (How will it get done?):

- Update/Make Disaster Cache MOUs.
- Seek funding for additional storage/shipping containers (20') to continually expand our capacity to meet basic needs during a disaster.
- Seek funding to maintain and keep each unit stocked, rotating expired items as needed.
- Seek funding to add supplies to all caches: Shelter/Warmth: Cots, Sleeping Bags, Socks, Smaller Tents; Water & Food: Water Filtration Systems, Supplies for Water Harvesting/Rain Barrel Components, add'l bulk Food in Buckets and/or MREs, Camp Cook Stoves; Sanitation: Hygiene Kits, Portable toilets; Lighting, Search & Rescue: Teen CERT Kits in each High School Cache; Communications: COW/Cell on Wheels, Sat Phone, GMRS Radios.

Food Plan & Resources:

- EQUIPMENT:
 - Need notification/alarm system for all refrigeration/freezer units, including SBHC medication refrigeration units. For power outages or when units are accidentally left open,

Mitigation Action #3: Response and Supply Planning

(continued)

or other emergencies. Alarms will alert when temperatures reach threshold, units are not working properly, doors are open, power is out, etc.

- Generators: Need more portable generators. Currently only have 1 and it is stored at the Holly Farm. Need full-school generators at each school, or at least permanent generators for refrigerators and freezers at each school to protect food supplies.
- Expand capacity to store more food at schools on a regular basis. Then the food will be available during disasters: Large freezers are needed at YVE, NHS, TOES & TOHS. Dry storage needed at CVH & NMS.
- PLAN: Emergency Food Management & Distribution Plan to include guidelines for food donations from restaurants and other commercially licensed kitchens and grocery stores, etc., receiving, storage, transport, protection, distribution, written agreements, staff expectations, etc.
- SUPPLIES:
 - Food pantry expansion. All shelf stable food. We have small food pantries that are all donation-based. For emergencies and for families in need on weekends and evenings.
 - Need more food for disaster caches. MREs and bucket food supplies.
 - Expand School Gardens (including greenhouses, rainwater collection systems and pumps) to include Waldport and all Lincoln City schools.

Action Status Report

2025 Update:

- Installed new disaster caches at Yaquina View Elementary, and Sam Case Elementary Schools.
- Moved disaster cache from off-site location to NMS campus and installed an additional container and supplies there.
- Moved the Oceanlake disaster cache to the school campus and added an additional container and supplies.
- Added an additional container and supplies to the Taft High School Campus.
- Added two shipping containers with supplies at Waldport High School Campus.
- Added the following to all disaster caches, districtwide: Hand Washing Stations, Cooking supplies, Bulk Food in Buckets, Grill Cooking Rings and grates, Gloves & Hats (1/person), add'l mylar blankets, fire-starting kit.
- Developed a Disaster Cache Operating Manual. Housed in each cache.
- Installed a large freezer for food storage in Waldport.

2020 Update:

- A cache was developed at Toledo Jr/Sr in 2019.
- A cache was developed at Oceanlake in 2015.

Mitigation Action #3: Response and Supply Planning

(continued)

- Additional cache supplies for Waldport Schools were obtained in 2017 & 2020, including one dedicated shipping container (20') for Disaster Cache in Waldport in 2020 (need one more).

**Champion/
Responsible Organization:** Safety Coordinator

Internal Partners:

Safety Coordinator, Nutrition Services Coordinator

External Partners:

Lincoln County EM, ODOT, OEM, DOGAMI, Lincoln City, Newport, Toledo, Waldport, Law Enforcement agencies, Fire Districts, Sodexo Nutrition Services, USDA, Sanitation Districts, Water Districts, First Student, Red Cross, FEMA

Potential Funding Sources:

Local Funding Resources, grants

Estimated cost:

Low to High

Timeline:

- Ongoing
- Short Term (1-4 years)
- Medium Term (4-10 years)
- Long-Term (10+ years)

Form Submitted by: Lincoln County School District, revised 2020 (action previously in applicable city addenda)

Action Item Status: Ongoing

Mitigation Action #4: CERT

(What do we want to do?)	Alignment with Plan Goals:				High Priority Action Item?
Maintain and promote the Teen CERT program activity in the School District.	<input checked="" type="checkbox"/> 1	<input type="checkbox"/> 2	<input type="checkbox"/> 3	<input type="checkbox"/> 4	<input type="checkbox"/> Yes
	<input type="checkbox"/> 5	<input type="checkbox"/> 6	<input type="checkbox"/> 7	<input type="checkbox"/> 8	
Create Adult CERT Teams at schools without Teen CERT programs.	<input type="checkbox"/> 9	<input checked="" type="checkbox"/> 10	<input type="checkbox"/> 11		

Alignment with Existing Plans/Policies:

All Hazards Emergency Plan

Rationale for Proposal (Why is this important?):

The Disaster Mitigation Act of 2000 requires communities to identify actions and projects that reduce the effects of hazards on the community [201.6(c)(3)(ii)]

After a large Cascadia Subduction Zone earthquake and tsunami, or other natural disaster, professional responders will not be readily available or able to respond to help perform rescue operations at our schools. Resources for the immediate response and ongoing care of students and staff will be severely disrupted due to damage from the earthquake/tsunami and critical infrastructure limitations. Schools will need to be equipped to take care of the immediate and ongoing needs of their students and staff.

Training staff and students to be CERT (Community Emergency Response Team) members, so that they will learn about the hazards that may impact their area and so they will be able to be rescuers in a large disaster when professional rescuers are not readily available or are overwhelmed is a key strategy for reducing the effects of hazards on our community.

The school district offers a Teen CERT semester course at its high schools, so high schools will have trained responders at their schools. They have not trained staff in CERT yet, except those who teach the courses.

Ideas for Implementation (How will it get done?):

Continue supporting Teen CERT programs.

Create Adult CERT teams at each school. Prioritize schools without Teen CERT programs (OLE/TAES (Lincoln City), SCE/YVE/NMS/TLC (Newport), TOES & F/M (Toledo). Provide information about the CERT program to employees; Obtain funding to purchase CERT supplies and to provide training stipends for school staff to attend training.

Action Status Report

2025 Update:

- Teen CERT languished during the pandemic due to social distancing. However, all four high schools have vital Teen CERT semester courses again. Funds were recently procured to purchase a set of 30 new S&R kits for the Waldport High School and Taft High School programs.

Mitigation Action #4: CERT

(continued)

2020 Update:

- Since the 2015 plan, Teen CERT semester courses were added to Newport High and Toledo Jr/Sr High School.

**Champion/
Responsible Organization:** Safety Coordinator

Internal Partners:

Safety Coordinator, High School Administrators

External Partners:

Lincoln County EM, Fire Districts, Lincoln City, Newport, Toledo, Waldport, Fire Partners, Local CERT Teams, OEM, FEMA, DOGAMI

Potential Funding Sources:

Local funding resources, grants

Estimated cost:

Low

Timeline:

- Ongoing
- Short Term (1-4 years)
- Medium Term (4-10 years)
- Long-Term (10+ years)

Form Submitted by: Lincoln County School District, 2020

Action Item Status: Ongoing

Mitigation Action #5: Mitigation Resources and Equipment

(What do we want to do?)	Alignment with Plan Goals:				High Priority Action Item?
Improve, maintain, and obtain resources and equipment essential for mitigating the impacts of disasters.	<input checked="" type="checkbox"/> 1	<input checked="" type="checkbox"/> 2	<input checked="" type="checkbox"/> 3	<input type="checkbox"/> 4	<input type="checkbox"/> Yes
	<input checked="" type="checkbox"/> 5	<input type="checkbox"/> 6	<input type="checkbox"/> 7	<input type="checkbox"/> 8	
	<input type="checkbox"/> 9	<input checked="" type="checkbox"/> 10	<input type="checkbox"/> 11		

Alignment with Existing Plans/Policies:

All Hazards Emergency Plan, Family Reunification Plan, Sheltering Plan, School Bus Emergency Plan, Disaster Cache Operations Plan

Rationale for Proposal (Why is this important?):

The Disaster Mitigation Act of 2000 requires communities to identify actions and projects that reduce the effects of hazards on the community [201.6(c)(3)(ii)]

Communications: Effective communication within and between schools and emergency personnel are essential in everyday emergencies and during natural disasters. Cells on Wheels (COWs) and Sat Runners, as well as Satellite phones are needed to fill the communication gap between the communities in our expansive district. These are also needed to facilitate communication between parents/guardians and their children when roads are not passible and children are sheltering at school. A plan should be developed for storage, training, and deployment of these emergency communications tools. We need the capacity to get internet sources up quickly to restore emergency communications. Uninterrupted Power Supplies (UPS) are needed at each school to sustain school communication and security systems during power, communication, and utility disruptions. Need a plan for all schools and district facilities to have Main and Intermediate Distribution Frames (MDF & IDF) and dedicated MDF rooms with ventilation at each school to protect against moisture & humidity, leaky roofs, water damage from storms, floods, trees falling on roof or roof blows off, etc. This will also keep our security systems (access control, fire alarm systems, lockdown buttons, security cameras, etc., functional. These systems also need to be upgraded to meet current security standards and address challenges.

Freezers: The Burgess Complex has a freezer that can be used for food storage or morgue if it is attached to the neighboring fire department generator. Work was initiated but not completed. Large freezers are needed at YVE, NHS, TOES & TOHS and Dry storage is needed at CVH & NMS to store more food for regular use/rotation, and so that it is available for disaster purposes.

Debris Removal: The district needs to expand its capacity to remove debris (pulling trees out of the way, removing mud, clearing debris and roofing, etc.) at our schools and facilities after a storm. Upgrading its vehicle fleet to 4WD and procuring a 5-yard dump truck would improve our capacity to bring schools back to safe status sooner so we can open our doors to students and continue our vital services. This is also important for sheltering purposes.

Mitigation Action #5: Mitigation Resources and Equipment

(continued)

Ideas for Implementation (How will it get done?):

NEW: Procure funding and purchase Sat Runners/COWS to be housed at schools in each region of Lincoln County: Oceanlake Elem & Taft High School (Lincoln City), Newport Middle School and TLC (Newport), Toledo Elementary & Toledo Jr/Sr, Waldport High School. Expand to all schools and district facilities as funding is available. Encourage community partners to add these resources to their supplies to expand community capacity.

NEW: Procure ongoing funding and purchase Satellite Phones for each school and support facility.

Procure funding to improve internal debris removal capacity.

Procure funding to expand food storage at schools.

NEW: Create an MDS/IDS and UPS master plan for each school and support facility. Procure funding to address communication, power, and security equipment gaps.

Action Status Report

2025 Update:

- Installed a Distributed Antenna System throughout Taft High School to support police, fire, and 911 communication systems.
- Purchased a portable Food Service Generator that can be deployed (if roads are passable) to a school freezer during a power outage to protect food resources).

2020 Update:

- Lincoln City partners (school and law enforcement) met in 2019/2020 to discuss the communications deficiencies at Taft schools and for first responders. The group is working with a contractor to establish three solutions: a low, medium, and high-cost solution.

Champion/

Responsible Organization:

Facilities and Maintenance

Internal Partners:

Safety Coordinator
Technology Director & Manager
Nutrition Services Manager

External Partners:

LCPD, NLFR, TFD, City of Toledo, Oregon Housing Authority, Oregon Department of Human Services/Office of Resilience and Emergency Management

Potential Funding Sources:

Local Funding Resources, HMA (HMGP), OREM, PIER, grants

Estimated cost:

Medium to High

Timeline:

- Ongoing
 Short Term (1-4 years)
 Medium Term (4-10 years)
 Long-Term (10+ years)

Form Submitted by: Lincoln County School District, 2020

Action Item Status: Ongoing

Mitigation Action #6: Disaster Coordination Capacity

(What do we want to do?)	Alignment with Plan Goals:				High Priority Action Item?
Develop, maintain, and enhance the School District's capacity to provide coordination and services during and after a disaster event.	<input checked="" type="checkbox"/> 1	<input type="checkbox"/> 2	<input type="checkbox"/> 3	<input type="checkbox"/> 4	<input type="checkbox"/> Yes
	<input type="checkbox"/> 5	<input type="checkbox"/> 6	<input type="checkbox"/> 7	<input type="checkbox"/> 8	
	<input type="checkbox"/> 9	<input checked="" type="checkbox"/> 10	<input type="checkbox"/> 11		

Alignment with Existing Plans/Policies:

All Hazards Emergency Plan, Family Reunification Plan, Sheltering Plan, School Bus Emergency Plan

Rationale for Proposal (Why is this important?):

The Disaster Mitigation Act of 2000 requires communities to identify actions and projects that reduce the effects of hazards on the community [201.6(c)(3)(ii)]

The school district recently established a designated Emergency Operations Center (EOC) in Newport in the Superintendent's Conference Room, and a secondary EOC in the Safety Coordinator's Office in the same building. However, there is no generator, satellite phone, or redundant communications equipment to support this facility.

For redundancy, a backup EOC is needed in different geographic regions in Lincoln County in case the Newport EOC building is compromised in there are transportation barriers to the Newport site. This could be established at our Facilities & Maintenance Department in Toledo. Further, a satellite/mini EOC could be established at the Holly Farm Bus Barn or Maintenance Building on the North end of Lincoln City. A mobile EOC is also needed for responding locally to significant school emergencies.

LCSD needs a written Emergency Operations Center Plan, and the corresponding equipment, supplies, and training to carry out that plan.

Ideas for Implementation (How will it get done?):

NEW: Procure a generator, Sat phone, and COW for the primary, secondary, and satellite EOC, and for all schools and support facilities.

Develop a written EOC Plan & procure appropriate Supplies/Equipment & Training staff. Develop Backup District EOC at the Burgess Facilities & Maintenance (Toledo). Explore partnership with neighboring Fire Department in Toledo for EOC assets. Obtain mobile emergency response vehicles for deployment to school emergencies.

Action Status Report

2025 Update:

- Participated in a multi-agency Emergency Evacuation Point (EAP) exercise at Newport Airport. Examined the use of the mobile EOC and the COW/Sat Runner. Discussed with Facilities and Technology Directors. They support the need these for emergency communications.

2020 Update:

- Since the 2015 NHMP, the LCSD identified a location for its first EOC, in its new District Offices in Newport.

Mitigation Action #6: Disaster Coordination Capacity

(continued)

**Champion/
Responsible Organization:** Safety Coordinator & Technology Director

Internal Partners:

Facilities and Maintenance
Technology Dept., Safety Coordinator

External Partners:

OEM, OREM, FEMA, Lincoln County & City EMs, Fire
Districts, Law Enforcement, Lincoln County Amateur Radio
Operators

Potential Funding Sources:

Local Funding Resources, grants,
bond

Estimated cost:

Low to High

Timeline:

- Ongoing
- Short Term (1-4 years)
- Medium Term (4-10 years)
- Long-Term (10+ years)

Form Submitted by: Lincoln County School District, 2020

Action Item Status: Ongoing

Mitigation Action #7: Wildfire Safety and Resilience

(What do we want to do?)	Alignment with Plan Goals:				High Priority Action Item?
Enhance the safety and resilience of school campuses and district facilities by developing and implementing comprehensive fire and wildfire mitigation strategies, while expanding emergency preparedness and evacuation capabilities to effectively respond to wildfire and other hazard-related threats.	<input checked="" type="checkbox"/> 1	<input checked="" type="checkbox"/> 2	<input checked="" type="checkbox"/> 3	<input type="checkbox"/> 4	<input checked="" type="checkbox"/> Yes
	<input checked="" type="checkbox"/> 5	<input type="checkbox"/> 6	<input type="checkbox"/> 7	<input type="checkbox"/> 8	
	<input type="checkbox"/> 9	<input checked="" type="checkbox"/> 10	<input type="checkbox"/> 11		

Alignment with Existing Plans/Policies:

All Hazards Emergency Plan, Family Reunification Plan, Sheltering Plan

Rationale for Proposal (Why is this important?):

The Disaster Mitigation Act of 2000 requires communities to identify actions and projects that reduce the effects of hazards on the community [201.6(c)(3)(ii)]

Many of the School District schools and facilities are flanked by dense wooded/forest areas, increasing the risk of damage by wildfire. We need to create defensible spaces around all of our schools and campuses to reduce this risk. Further, many School District schools do not have sprinkler systems, making them more vulnerable to damage or loss from fires. Others have aging or nearing obsolete fire alarm panels. Schools also have exterior construction materials that put the school at higher risk from catching fire from embers from nearby wildfires.

Evacuation plans are needed to determine how to quickly relocate large numbers of students and staff if school is in session during a wildfire emergency threatening one or more of our campuses. The number of school buses available are limited and bus drivers typically go home or to other jobs during the school day.

Ideas for Implementation (How will it get done?):

Work with each city planner and manager, and county planning department, to develop plans and approval to remove trees where appropriate to reduce risk. Reduce underbrush wear feasible. Seek grant funding opportunities and partnerships to perform mitigation like ignition-resistant construction.

Identify funding streams for fire alarm systems, panels, and sprinklers in our schools and facilities. Consider other hazards & threats to see where mitigation activities may be leveraged to meet multiple needs.

Develop an evacuation plan for wildfire emergencies when school is in session.

Action Status Report

2025 Update:

- Defensible Space was created at Toledo Jr/Sr High School and Arcadia School.

Mitigation Action #7: Wildfire Safety and Resilience

(continued)

- School District received a FEMA Ignition-Resistant Construction Grant for Arcadia School, Newport Middle School, Newport High School East & West Campuses, Crestview Heights School and Waldport High School. The Arcadia Mitigation was completed in 2024.
- Defensible Space was improved at Oceanlake Elementary School in conjunction with a project to create a school driveway to reduce traffic on the ambulance route to the hospital.
- Underbrush mitigation has been performed at Taft High School by the Forestry Class students.
- School District passed a Bond on the May 2025 ballot. Funding is included to upgrade the majority of our fire alarm systems.
- Participated in county and regional evacuation plan development.

2020 Update

- This is a new Action Item

**Champion/
Responsible Organization:**

Safety Coordinator

Internal Partners:

Facilities & Maintenance

External Partners:

All Cities and County planning departments, Forest companies, Fire departments.

Potential Funding Sources:

Grants, bond, local funding resources

Estimated cost:

Low to High

Timeline:

- Ongoing
- Short Term (1-4 years)
- Medium Term (4-10 years)
- Long-Term (10+ years)

Form Submitted by:

Lincoln County School District, 2020 (Rich Belloni, Director of Facilities and Sue Graves, Safety Coordinator)

Action Item Status:

Ongoing, revised

Mitigation Action #8: Windstorm Mitigation

(What do we want to do?)

Alignment with Plan Goals:

High Priority
Action
Item?

Develop a wind and straight-line windstorm mitigation plan and perform actions to decrease the risk of damage from these high probability events.

<input checked="" type="checkbox"/> 1	<input checked="" type="checkbox"/> 2	<input checked="" type="checkbox"/> 3	<input type="checkbox"/> 4	
<input checked="" type="checkbox"/> 5	<input type="checkbox"/> 6	<input type="checkbox"/> 7	<input type="checkbox"/> 8	<input checked="" type="checkbox"/> Yes
<input type="checkbox"/> 9	<input checked="" type="checkbox"/> 10	<input type="checkbox"/> 11		

Alignment with Existing Plans/Policies:

All Hazards Emergency Plan, Family Reunification Plan, Sheltering Plan

Rationale for Proposal (Why is this important?):

Lincoln County is susceptible to strong storms, including sustained high winds and even tornados. Several of LCSD’s schools have roofs that are at risk of lifting off during such high windstorms. Some schools have cracks and separation in the floor that with movement in the ground, have weakened the roof systems. Others have old built-up roofs that are in open areas that are quite exposed and highly susceptible to being caught or damaged by sustained high winds. Most classrooms large banks of exterior windows, susceptible to storm damage and making students/staff vulnerable to injury.

Roof: Roof mitigation is needed, as identified in the LCSD Long Range Facilities Plan, at:

- In the North: Oceanlake Elementary, Taft Elementary, and Taft High School.
- In the West: Early Childhood Center, Yaquina View Elementary, Newport Middle, both Newport High campuses, and the Compass Center.
- In the East: Toledo Elementary, Toledo Jr/Sr High, and Arcadia.
- In the South: Crestview Heights and Waldport High.

Trees: Several of these schools are also susceptible to wind damage due to the proximity of large trees next to the buildings. These schools need tree mitigation to reduce the risk of wind damage due to falling trees:

- In the North, Oceanlake Elementary, Taft Elementary, and Taft High School
- In the West: Sam Case Elementary School and the Teaching & Learning Center/District Office
- In the East: Toledo Elementary, Toledo Jr/Sr High, Arcadia, and the Support Services building at Burgess.
- In the South: None.

Ideas for Implementation (How will it get done?):

Work with each city planner and manager, and county planning department, to develop plans and approval to remove trees where appropriate to reduce the risk of trees falling on buildings. Identify funding streams for new roofs and/or roof repairs as well as tree removal.

Mitigation Action #8: Windstorm Mitigation

(continued)

Action Status Report

2025 Update:

- LCSD added a new protocol to their All-Hazards Emergency Plan called: Wind: Severe Wind & Tornados. A staff training video was also created.
- A good portion of the large trees threatening Oceanlake Elementary were removed in conjunction with a new driveway project.
- Many of the large trees along the side of Toledo Jr/Sr High were removed after one of the trees fell on a neighboring property.
- Minor tree mitigation was performed at Arcadia School in preparation for the FEMA Ignition-Resistant Construction grant.
- Underbrush mitigation was performed at Sam Case Elementary School.
- LCSD passed a Bond on the May 2025 ballot. Funding is included to upgrade some roofs.

2020 Update

- This was a new Action Item

**Champion/
Responsible Organization:**

Facilities & Maintenance

Internal Partners:

Safety Coordinator, Facilities Director

External Partners:

All cities and County planning departments, forest management agencies.

Potential Funding Sources:

Grants, bond, local funding resources

Estimated cost:

Low to High

Timeline:

- Ongoing
- Short Term (1-4 years)
- Medium Term (4-10 years)
- Long-Term (10+ years)

Form Submitted by:

Lincoln County School District, 2020 (Rich Belloni, Director of Facilities and Sue Graves, Safety Coordinator)

Action Item Status:

New

Mitigation Action #9: Backup Power (Generators)

(What do we want to do?)	Alignment with Plan Goals:				High Priority Action Item?
Enhance the resilience and operational continuity of Lincoln County School District facilities during power outages by increasing backup power capacity through the acquisition and installation of reliable generators at critical school sites.	<input checked="" type="checkbox"/> 1	<input checked="" type="checkbox"/> 2	<input checked="" type="checkbox"/> 3	<input type="checkbox"/> 4	<input checked="" type="checkbox"/> Yes
	<input checked="" type="checkbox"/> 5	<input type="checkbox"/> 6	<input type="checkbox"/> 7	<input type="checkbox"/> 8	
	<input type="checkbox"/> 9	<input checked="" type="checkbox"/> 10	<input type="checkbox"/> 11		

Alignment with Existing Plans/Policies:

All Hazards Emergency Plan

Rationale for Proposal (Why is this important?):

Lincoln County is highly susceptible to severe weather events, including strong storms, sustained high winds, and tornadoes. Power outages during such emergencies can further compromise safety, communication, and emergency response capabilities.

The School District’s Long Range Facilities Plan identifies needs at multiple schools across all regions of the district. Furthermore, the proximity of large trees to several school buildings increases the risk of wind-related damage from falling limbs or uprooted trees.

To address these vulnerabilities, enhancing backup power capacity through the acquisition and installation of reliable generators at critical school sites is essential. This will ensure that schools can maintain essential operations, lighting, communication systems, and life-safety equipment during power disruptions, thereby improving overall resilience and emergency preparedness.

Generators: Further, full school generators & above-ground fuel tanks are needed at each school and district facility to help protect assets of food for disaster response purposes. Generators are also necessary to enhance communications during a wide variety of natural disasters involving power outages. Generators are also needed for school and Red Cross and Emergency Sheltering purposes. Finally, generators are needed to continue school operations when the power is out for extended periods of time. Some existing fuel tanks and generators need to be replaced, as identified in the LCSD Long Range Facility Planning Report, September 2020.

Plan: Until we get full-school generators for all schools, the district needs a consultant to develop a master Generator Plan for all schools, including what is needed, how to construct to serve various assets in each building, how to rotate limited generator power during a Red Cross Shelter activation so that shelter residents are served and assets like freezers and communications are protected and operational. We also need to determine how to transfer diesel fuel from school buses into our generators. A master plan is needed.

Ideas for Implementation (How will it get done?):

Begin by conducting facility audits to identify critical systems—such as lighting, HVAC, communication, and security—that require backup power. Schools should be prioritized based on their vulnerability to severe weather, historical power outage data, and their role in community emergency response.

Mitigation Action #9: Backup Power (Generators)

(continued)

REVISED: Create a generator master plan. Procure funding for full-school generators & above-ground fuel tanks for all schools and district facilities. OLE, TAES, Holly Farm, YVE, SCE, NHS, TLC, TOES, TOHS, ARC, F/M, CVH, WHS. Upgrade or replace existing generators at TOES, CVH, and replace fuel tank at WHS with a bigger tank. Explore the possibility of converting the existing generator at TOES (Toledo) to another fuel source (diesel, etc.). Complete the connection of the fire department generator to the Burgess Complex. (Toledo).

Select appropriate generator types—diesel, natural gas, or solar with battery backup—based on site-specific needs, fuel availability, and environmental considerations. Install automatic transfer switches to ensure seamless power transitions and ensure all installations comply with local codes, fire safety standards, and FEMA guidelines.

Address tree-related hazards by contracting certified arborists to assess and mitigate risks from large trees near school buildings. Establish a routine vegetation management schedule to reduce the likelihood of wind-related damage.

Update the district’s emergency response plans to incorporate generator use protocols and maintenance procedures. Provide training for staff on generator operation, safety measures, and emergency communication systems.

Implement a district-wide maintenance plan for regular generator testing, fuel management, and system inspections. Consider using remote monitoring systems to track generator performance and always ensure readiness.

Action Status Report

2025 Update:

- This is a new Action Item
- Applied for a PIER Grant and was awarded the grant (2025) for full-school generators and above ground 2,500-gallon fuel tanks at Taft High and Newport Middle Schools. This project should be completed in 2026.

**Champion/
Responsible Organization:**

Facilities & Maintenance

Internal Partners:

Facilities Director

External Partners:

All cities and County planning departments

Potential Funding Sources:

FEMA HMA, Grants, bond, local funding resources

Estimated cost:

Medium to High

Timeline:

- Ongoing
 Short Term (1-4 years)
 Medium Term (4-10 years)
 Long-Term (10+ years)

**Form Submitted
by:**

Form developed by OPDR and Lincoln County School District, 2025

Action Item Status:

New

Mitigation Action #10: Safe Rooms

(What do we want to do?)

Alignment with Plan Goals:

High Priority
Action
Item?

Strengthen student and staff safety during severe weather and other hazardous events by developing and implementing a comprehensive Safe Rooms Plan for each school facility, providing access to structurally reinforced, hazard-resistant shelter areas across the district.

1 2 3 4 Yes
 5 6 7 8
 9 10 11

Alignment with Existing Plans/Policies:

All Hazards Emergency Plan

Rationale for Proposal (Why is this important?):

Lincoln County School District is in a region prone to severe weather events, including high winds, coastal storms, and the potential for tornadoes. Many school buildings across the district lack adequate interior, windowless spaces that can serve as protective shelters during such events. This leaves students and staff vulnerable to injury from flying debris, structural damage, and broken glass, especially in classrooms with large exterior windows or aging infrastructure.

The district's Long Range Facilities Plan has identified structural vulnerabilities in several schools, including compromised roofs and proximity to large trees that pose additional risks during windstorms. In the absence of designated safe rooms, emergency response options are limited, and evacuation may not always be feasible or safe during fast-moving weather events.

Developing and implementing a comprehensive Safe Rooms Plan will significantly enhance the district's ability to protect students and staff during hazardous events. Structurally reinforced, hazard-resistant shelter areas will provide a reliable refuge, reduce the risk of injury, and support continuity of operations during and after emergencies.

Ideas for Implementation (How will it get done?):

Consider options for storm shelters or Safe Rooms that could double as some kind of educational environment for daily use and improve our capacity to reduce risk for multiple hazards such as tornados, severe wind, hazardous materials spills in the community, nuclear/radiation emergencies, active threat/lockdown situations, bomb shelter, etc

Begin with a district-wide assessment to identify schools that lack adequate shelter areas. Evaluate existing interior spaces for their potential to be retrofitted into safe rooms. Prioritize schools based on their exposure to risk, student population size, and known structural vulnerabilities.

Design safe rooms in accordance with FEMA P-361 and ICC 500 standards to ensure they are structurally reinforced and hazard-resistant. Where possible, incorporate multi-use functionality by converting existing spaces such as gyms or storage rooms into dual-purpose safe rooms. Plan safe rooms to accommodate accessibility for individuals with disabilities.

Mitigation Action #10: Safe Rooms

(continued)

Action Status Report

2025 Update:

- This is a new Action Item

**Champion/
Responsible Organization:** Facilities & Maintenance

Internal Partners:

Safety Coordinator, Facilities Director

External Partners:

All cities and County planning departments

Potential Funding Sources:

Grants, bond, local funding resources

Estimated cost:

Low to High

Timeline:

- Ongoing
- Short Term (1-4 years)
- Medium Term (4-10 years)
- Long-Term (10+ years)

Form Submitted by: Form developed by OPDR and Lincoln County School District, 2025

Action Item Status: New

Attachment B: Public Involvement Summary

Members of the Steering Committee provided edits and updates to the NHMP prior to the public review period as reflected in the final document. In addition, a survey was distributed that included responses from residents of the district (Volume II, Appendix F).

To provide the public information regarding the draft NHMP addendum, and provide an opportunity for comment, an announcement was provided from August 7 through 21, 2025 on the County's website and publicized by the district. Comments were reviewed and integrated into the NHMP as applicable. Additional opportunities for stakeholders and the public to be involved in the planning process are addressed in Volume II, Appendix B.

Various agencies and organizations contributed input through multiple channels, including comments on the draft. These groups include local and regional hazard mitigation agencies, development regulators, neighboring communities, businesses, academia, nonprofits, and community-based organizations serving underserved and socially vulnerable populations (see Volume II, Appendix B).

Steering Committee

Steering Committee members possessed familiarity with the district and how it is affected by natural hazard events. The Steering Committee guided the update process through several steps including goal confirmation and prioritization, action item review and development, and information sharing, to update the NHMP and to make the NHMP as comprehensive as possible. The Steering Committee met formally on the following dates: March 14, 2025 Facilities review with Sue Graves, Rich Belloni/Facilities Director, and Tim Kaufman/Facilities Manager; April 3, 2025 Technology review with Sue Graves, Bryan Freschi/Technology Director, and Joshua Bates/Technology Manager; April 4, 2025 Food/Nutrition Services review with Jamie Nicholson/Nutrition Services Manager, Patty Graves/Sodexo Nutrition Manager; and April 8, 2025 plan review and update meeting with IPRE faculty and Sue Graves.

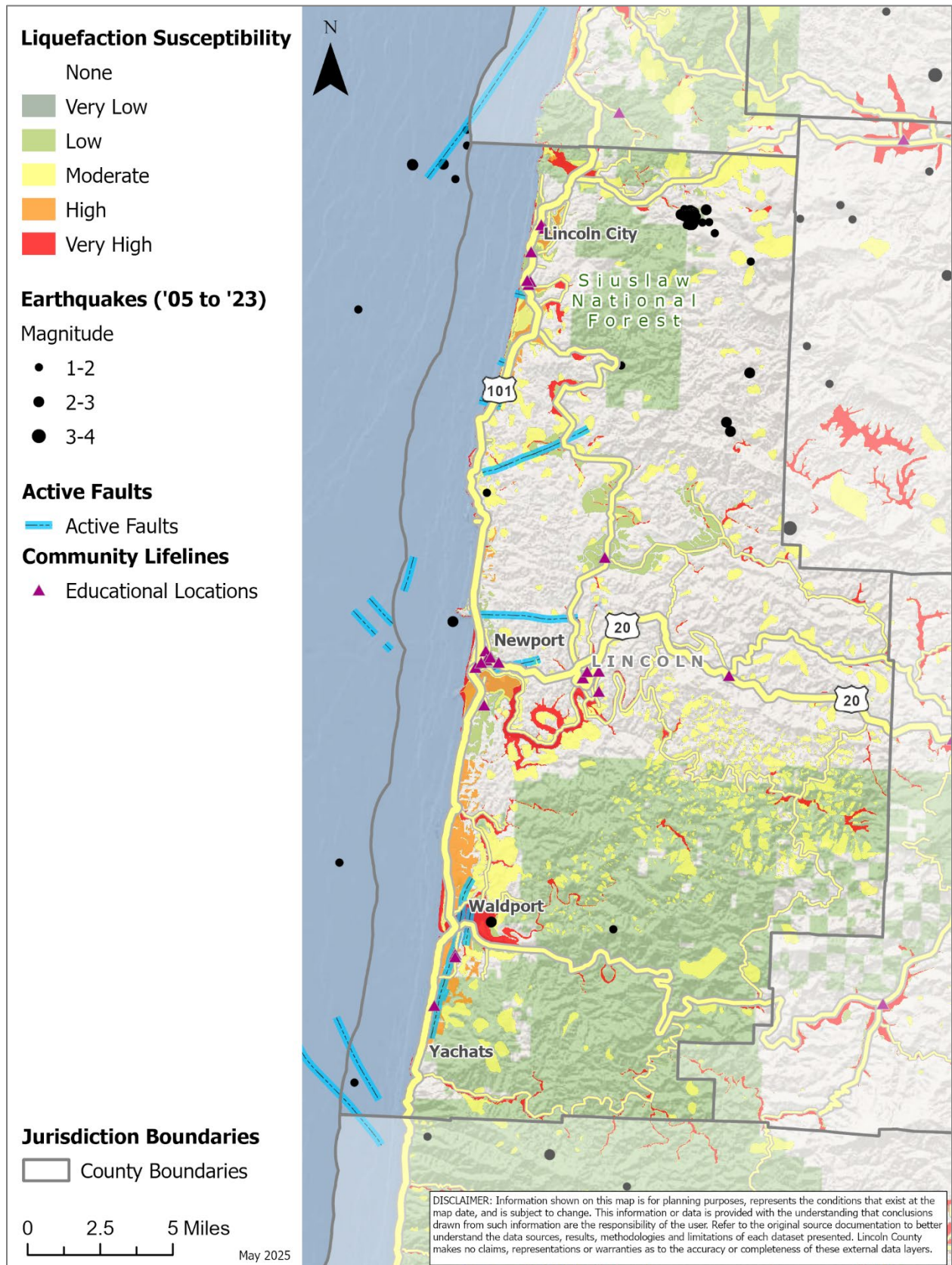
On April 8, participants gathered to review the County's previous NHMP and receive updates on the current planning process. The meeting began with an overview of hazard mitigation planning, the NHMP update process, and the project timeline.

Attendees revisited the recent history of hazard events, reaffirmed the NHMP's mission and goals, and discussed strategies for public outreach. They also reviewed the draft risk assessment update, providing feedback on community vulnerabilities and hazard-specific information. The session concluded with a review and update of the implementation and maintenance program to ensure the NHMP remains responsive and effective over time.

Attachment C: Hazard Maps

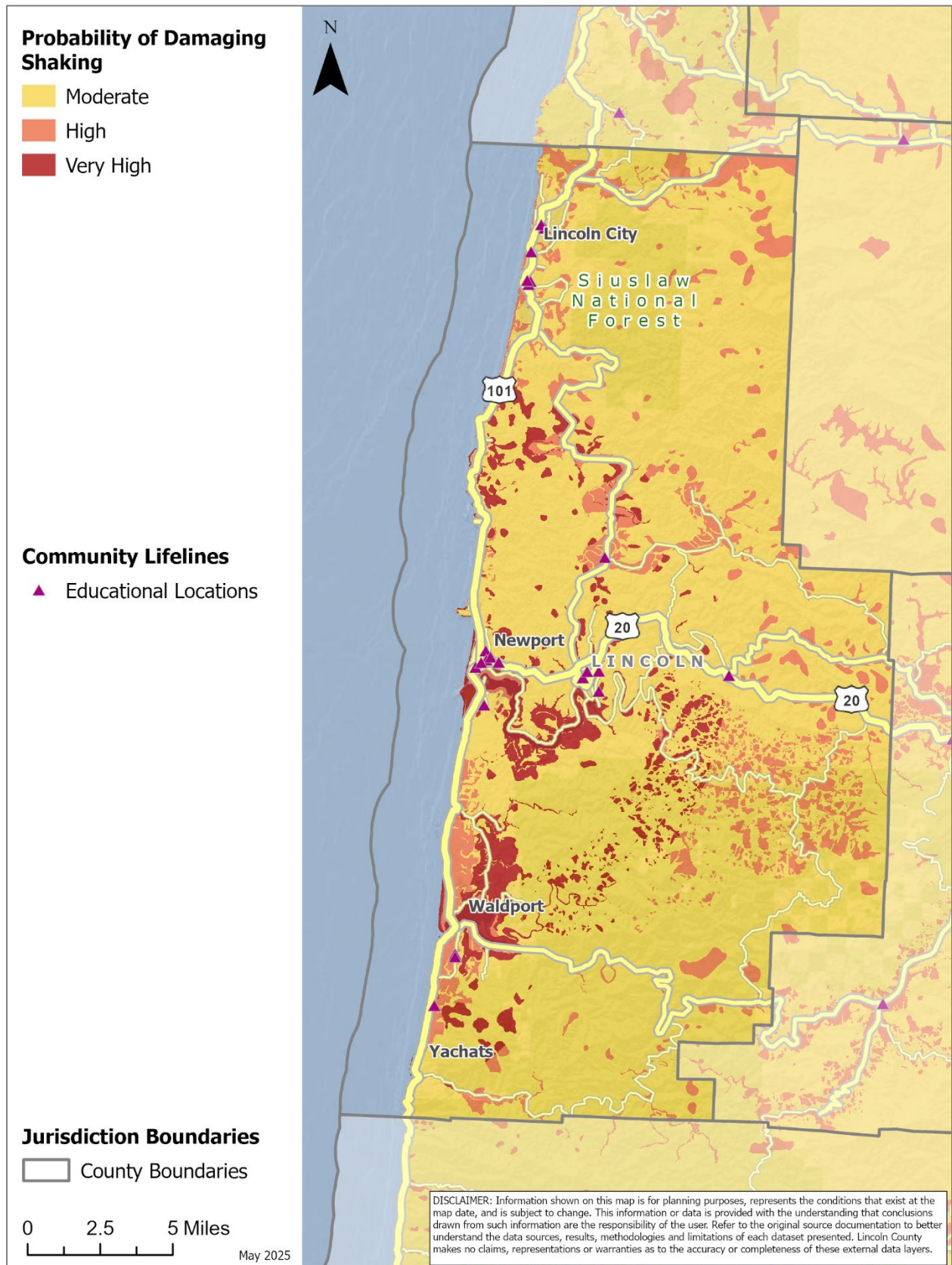
MAP LCSD-2 EARTHQUAKE LIQUEFACTION (SOFT SOIL) HAZARD AND ACTIVE FAULTS	68
MAP LCSD-3 PROBABILITY OF DAMAGING SHAKING.....	69
MAP LCSD-4 PERCEIVED SHAKING & DAMAGE POTENTIAL, PROBABILISTIC EARTHQUAKE MODEL	70
MAP LCSD-5 PERCEIVED SHAKING AND DAMAGE POTENTIAL, CSZ EARTHQUAKE MODEL	71
MAP LCSD-6 TSUNAMI INUNDATION SCENARIOS	72
MAP LCSD-7 FLOOD HAZARD ZONES (100- AND 500-YEAR FLOODPLAINS)	73
MAP LCSD-8 LANDSLIDE SUSCEPTIBILITY EXPOSURE	74
MAP LCSD-9 BURN PROBABILITY AND FIRE HISTORY (1992-2022).....	75
MAP LCSD-10 POTENTIAL WILDFIRE IMPACT (OVERALL)	76

Map LCSD-2 Earthquake Liquefaction (Soft Soil) Hazard and Active Faults



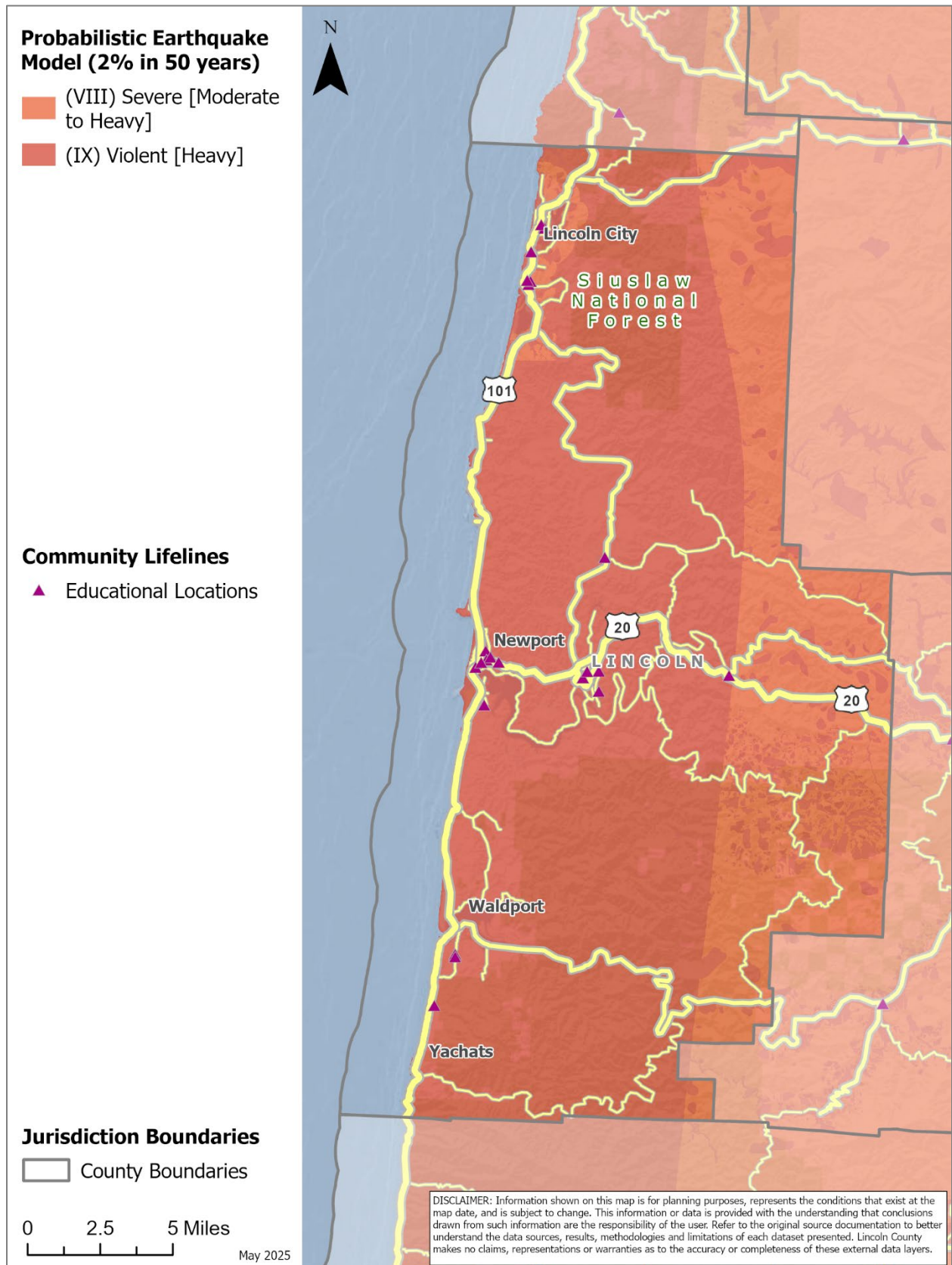
Source: [Oregon Explorer: Map Viewer](#) – To view map detail click hyperlink to left.

Map LCSD-3 Probability of Damaging Shaking



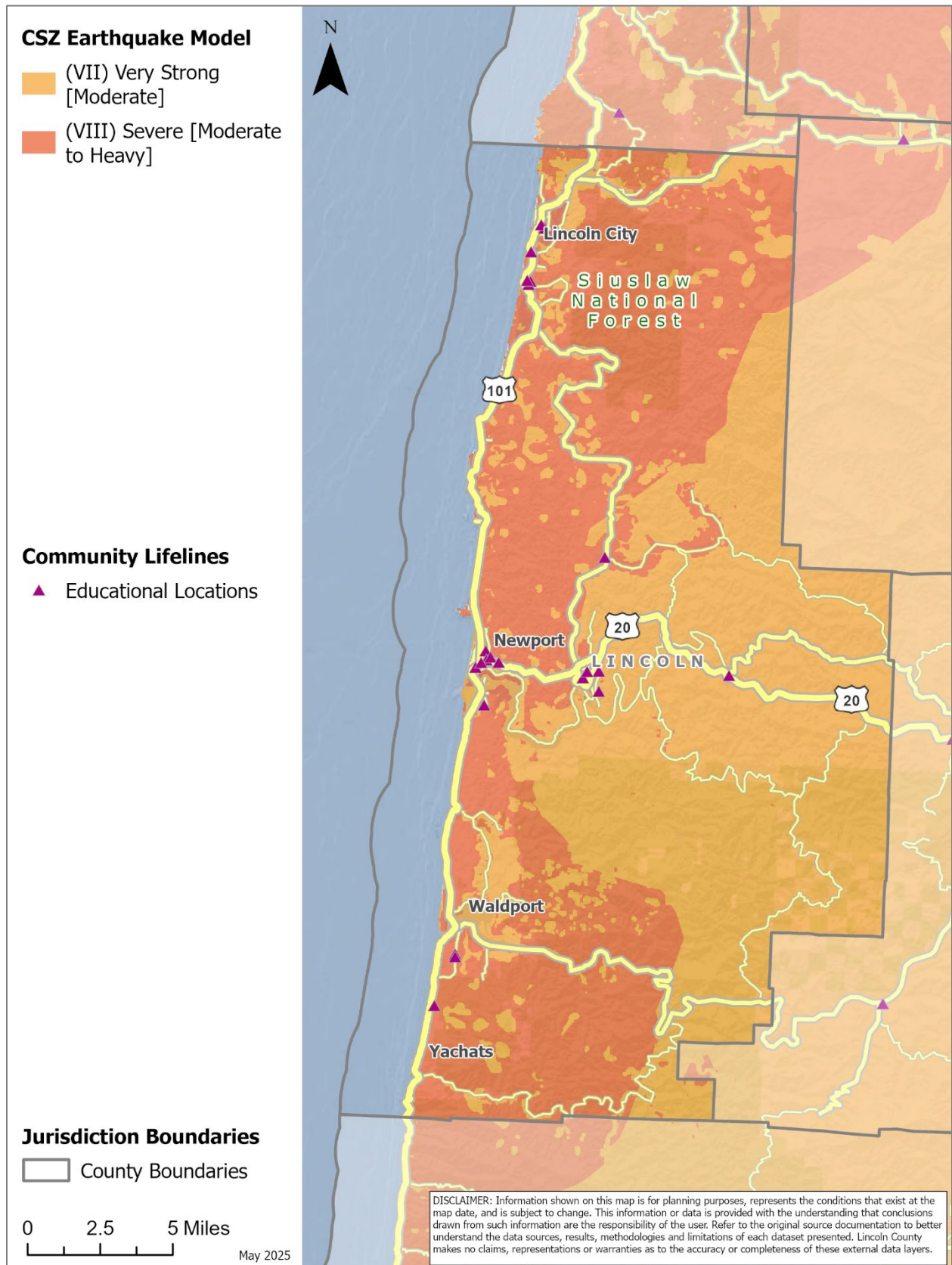
Source: [Oregon Explorer: Map Viewer](#) – To view map detail click hyperlink to left.

Map LCSD-4 Perceived Shaking & Damage Potential, Probabilistic Earthquake Model



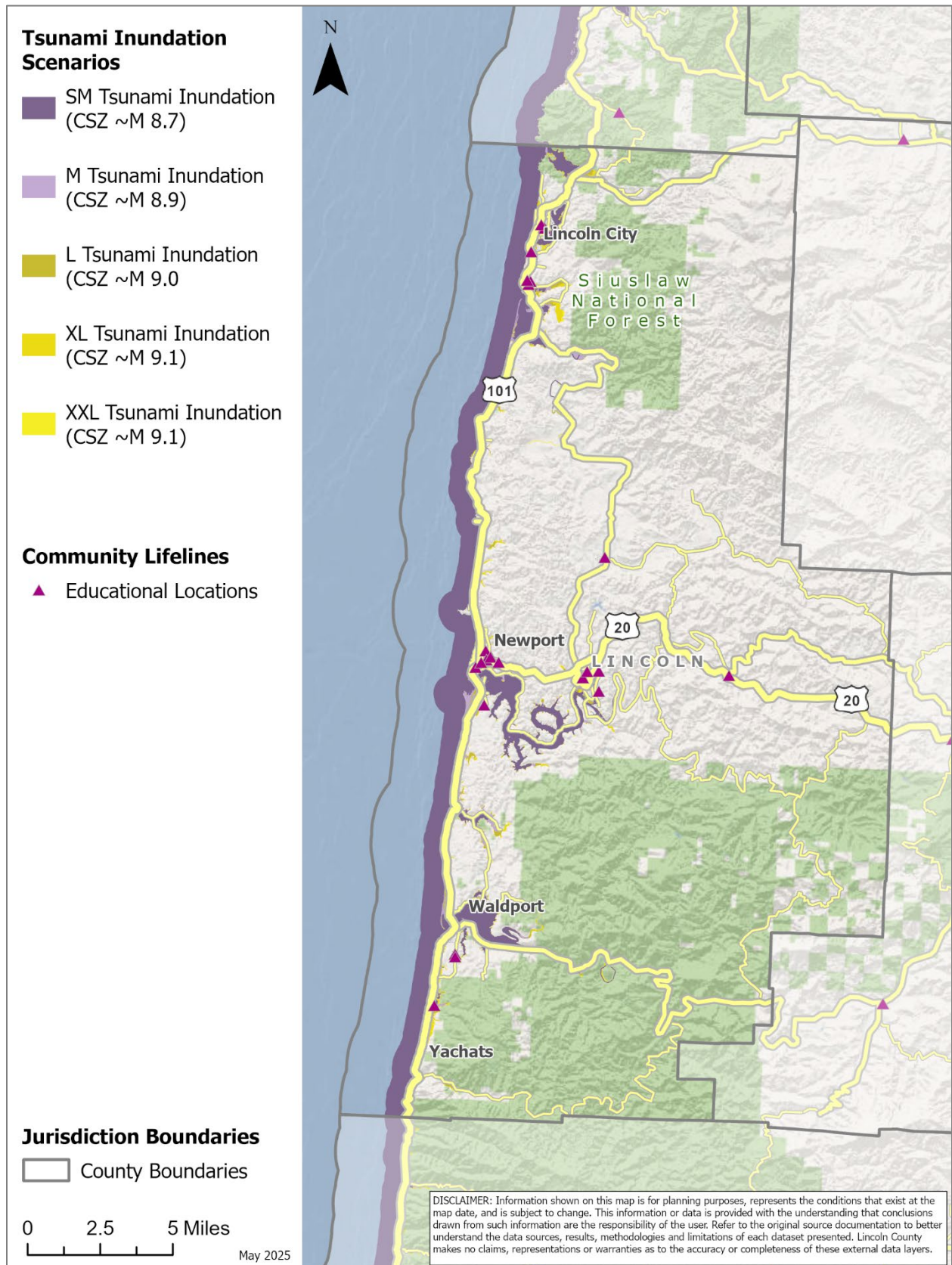
Source: [Oregon Explorer: Map Viewer](#) – To view map detail click hyperlink to left.

Map LCSD-5 Perceived Shaking and Damage Potential, CSZ Earthquake Model



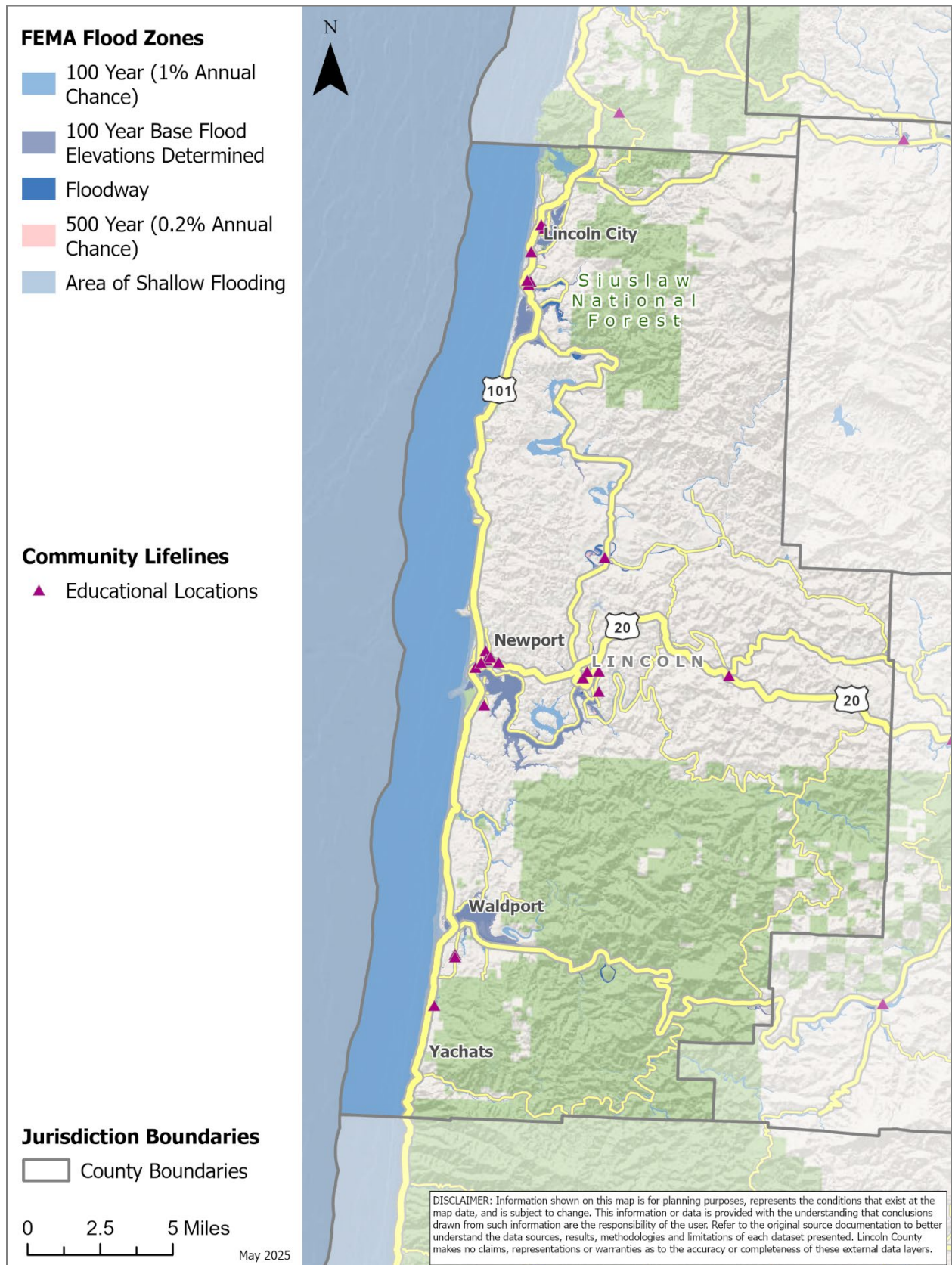
Source: [Oregon Explorer: Map Viewer](#) – To view map detail click hyperlink to left.

Map LCSD-6 Tsunami Inundation Scenarios



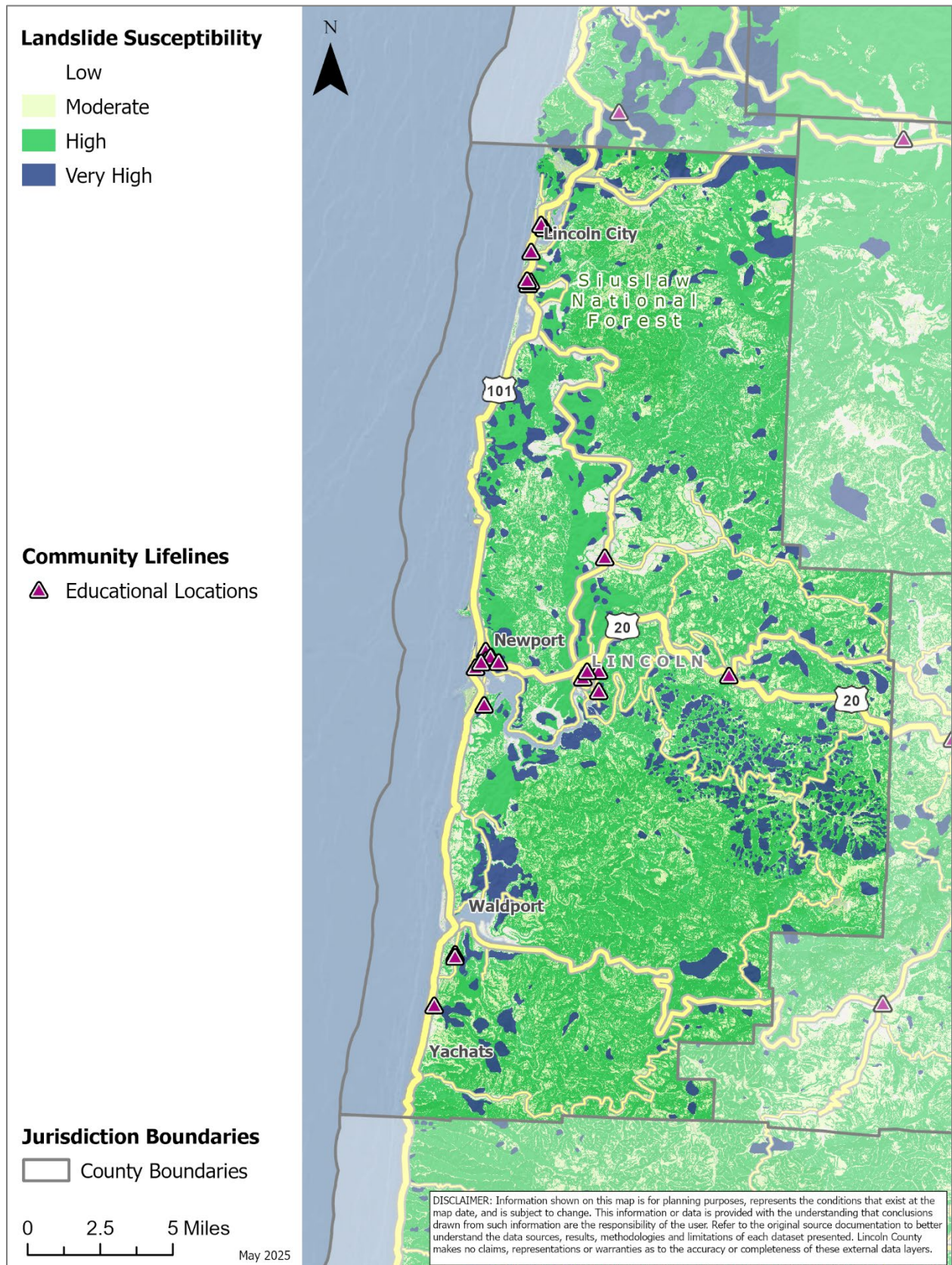
Source: [Oregon Explorer: Map Viewer](#) – To view map detail click hyperlink to left.

Map LCSD-7 Flood Hazard Zones (100- and 500-year floodplains)



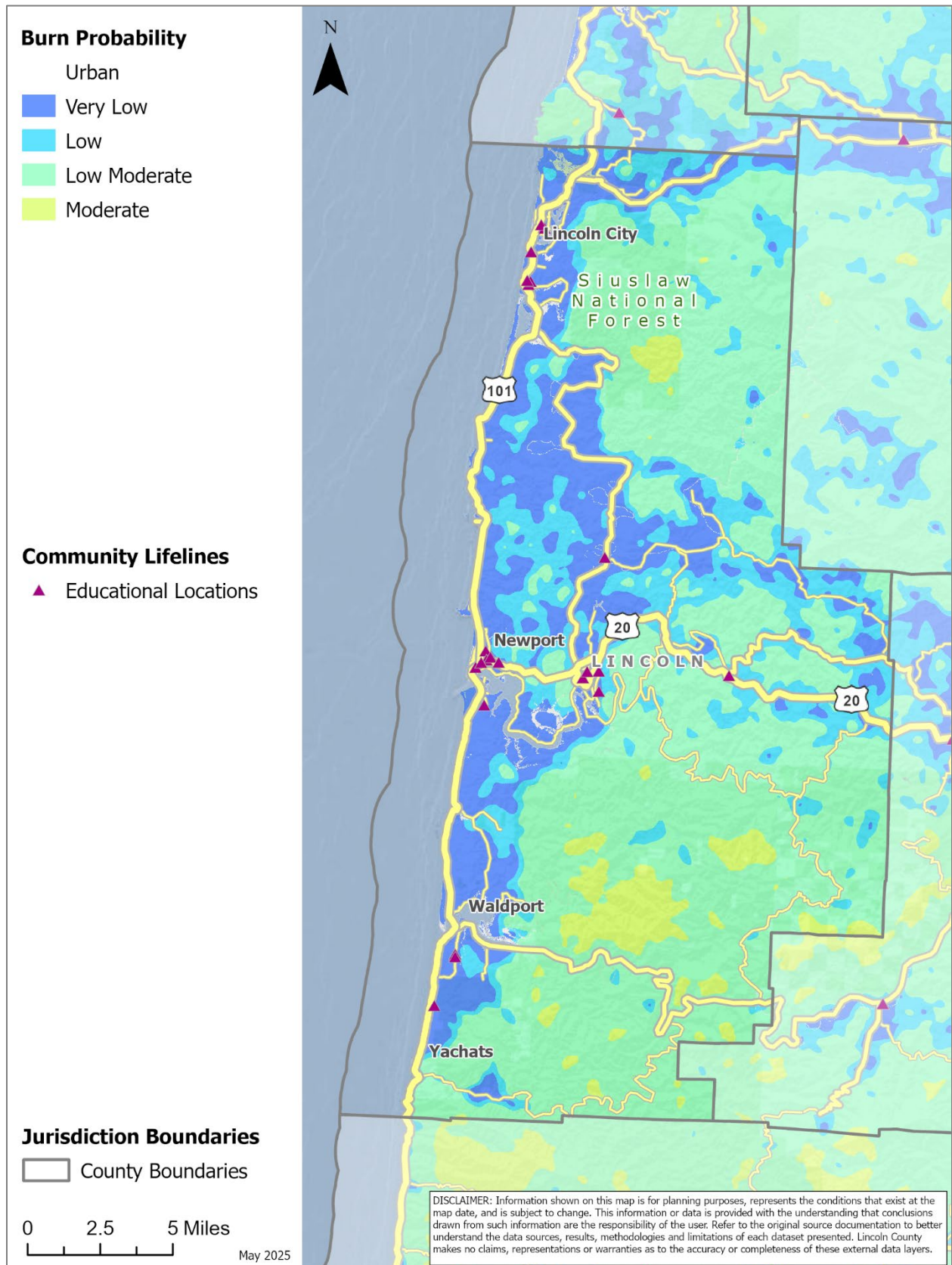
Source: [Oregon Explorer: Map Viewer](#) – To view map detail click hyperlink to left.

Map LCSD-8 Landslide Susceptibility Exposure



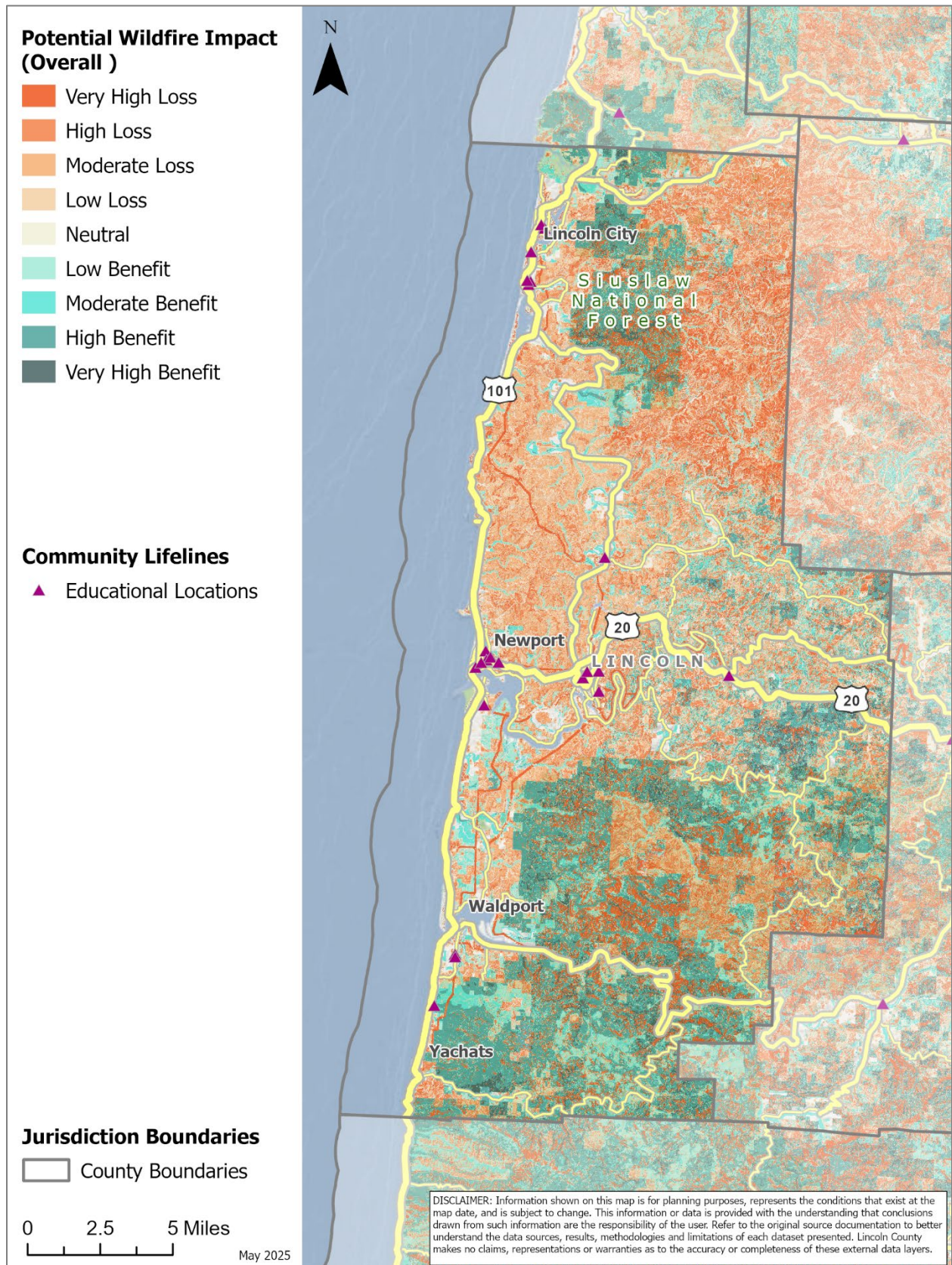
Source: [Oregon Explorer: Map Viewer](#) – To view map detail click hyperlink to left.

Map LCSD-9 Burn Probability and Fire History (1992-2022)



Source: [Oregon Explorer: Map Viewer](#) – To view map detail click hyperlink to left.

Map LCSD-10 Potential Wildfire Impact (Overall)



Source: [PNW Quantitative Wildfire Risk Assessment](#) (2023, layer name = icNVC), To view map detail click hyperlink to left..