

Notice to Taxing Districts

ORS 308.225



Cadastral Information Systems Unit
PO Box 14380
Salem, OR 97309-5075
fax 503-945-8737
boundary.changes@oregon.gov

City of Newport
Community Development Director
169 S.W. Coast Highway
Newport OR 97365-3806

Description Map - Received from: Derrick Tokos
On: 8/9/2017

This is to notify you that your boundary change in Lincoln County for:
ANNEX to CITY of NEWPORT: WITHDRAW from SEVERAL DISTRICTS

ORD. #2117 (1-AX-17/1-Z-17)

has been: [] Approved
[] Disapproved 8/14/2017 see 2018-19 folder for order

Notes: --Label Point of Beginning (POB) on the map.

--Bearing and distance tie note to POB needs to include "South" 1/4 corner of "Sec. 29".

--The 2nd course bearing and distance and also the 3rd course bearing on the map do not match the description.

-Page 1, Section 1, A-- says the annexation is illustrated in Exhibit "A". Label the map accordingly.

Department of Revenue File Number: 21-452-2017

Reviewed by: Elise Bruch, 503-302-8353

Boundary: [x] Change [] Proposed Change

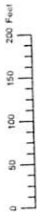
The change is for:

- [] Formation of a new district
[x] Annexation of a territory to a district
[x] Withdrawal of a territory from a district
[] Dissolution of a district
[] Transfer
[] Merge
[] Establishment of Tax Zone

ORD # 2117

10-11-29-PD TL 400

THIS MAP WAS PREPARED FOR ASSESSMENT PURPOSE ONLY

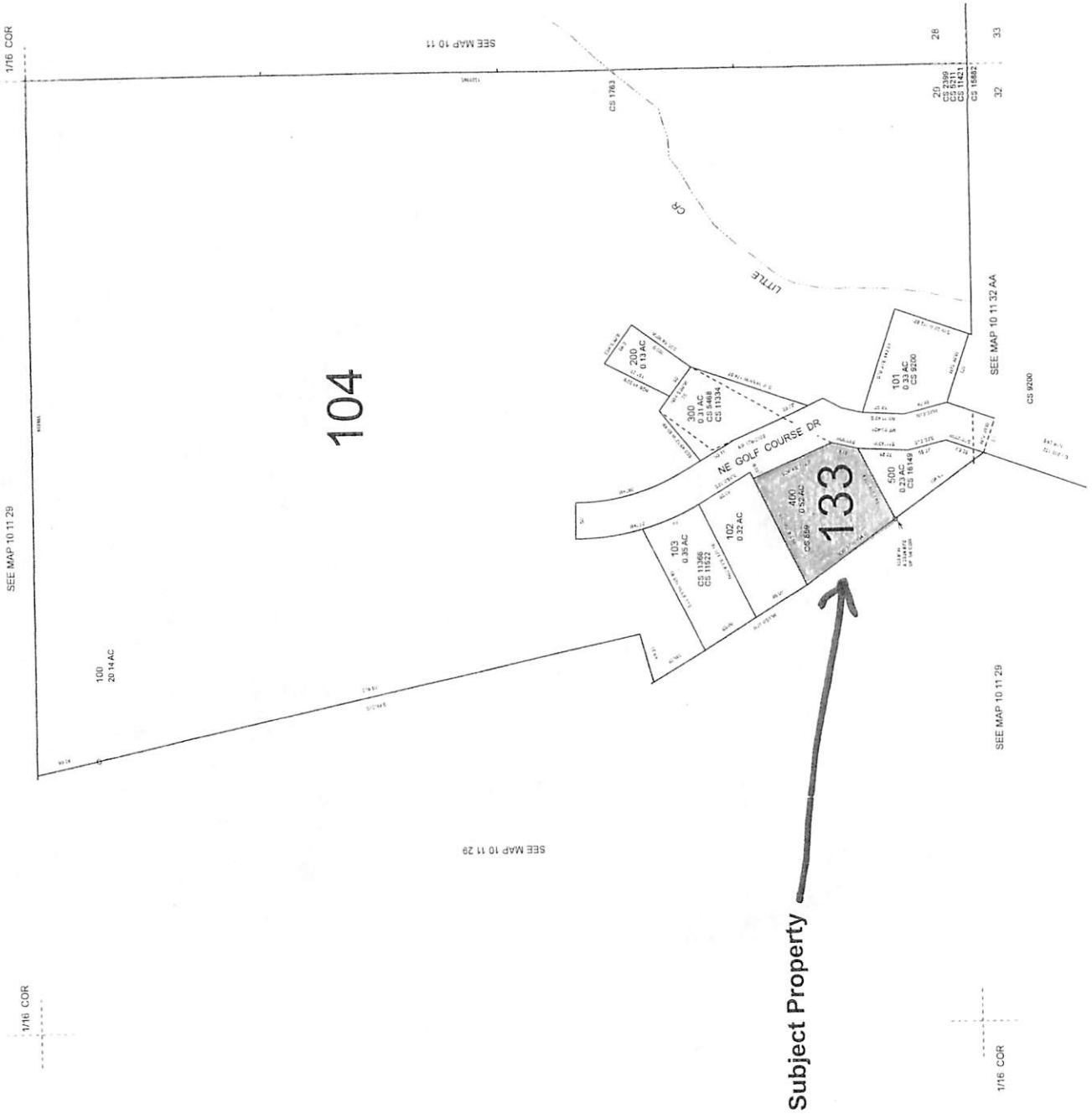


S.E. 1/4 S.E. 1/4 SEC. 29 T. 10S. R. 11W. W.M.
LINCOLN COUNTY
1" = 100'

Exhibit "B"
I-AX-17 / I-Z-17

Capit.
199

NE



Subject Property

Revised: SEB
03/30/2004

NEWPORT
10 11 29 DD