



# N E W S L E T T E R

A PEEK INSIDE	
<td><b>Compost Info</b> Page ..... 2</td>	<b>Compost Info</b> Page ..... 2
<td><b>Old Tire Roundup</b> Page ..... 4</td>	<b>Old Tire Roundup</b> Page ..... 4
<td><b>Kid Stuff</b> Pages ..... 6 &amp; 7</td>	<b>Kid Stuff</b> Pages ..... 6 & 7

## Making A Difference Literally

There is a reason our beaches and forests have as little litter as they do. It is from an enormous effort made by individuals, volunteer groups, and organized events dedicated to keeping our natural spaces clean.

*To every person who has taken a moment to pick up some litter - we say, THANK YOU!*

*You are making a difference.*

The Coastal Character program has teamed up with local groups such as

- **Surfrider**
- **SOLVE**
- **The ARC**
- **Rotary**

to develop a Community Cache of beach and litter cleanup supplies supporting volunteer efforts. You can make a difference too by joining these community efforts.

In addition the Solid Waste District is also working in collaboration with the

- Sheriff's Forest Enforcement Program to monitor and cleanup local timber lands;
- US Forest Service to cleanup Siuslaw National Forest areas within the County; and
- County Parks to prevent illegal dumping and theft of services.

Together, we make a difference.



*Coastal Character logo-wear is earned by the folks helping who are making a difference in our community. Join a group. Get involved!*

## Got E-trash? E-cycle It!

Your local hauler is set up as an Oregon E-cycles Program Location. That means that you can drop off the following items for free at their E-cycles site:

- Old Televisions**
- Old Desktop Computers**
- Laptop Computers**
- Computer Tablets**
- Computer Monitors**
- Printers**
- Computer Keyboards**
- Computer Mice**

Please note that the Oregon E-cycles Program *does not accept* other types of electronic devices such as stereo



speakers, game consoles, cell phones, scanners, or appliances.

In 2010 Oregon created a disposal ban on computers, monitors and TVs. This means these items need to be recycled and not just sent to the landfill.

*ARTICLE CONTINUED*

*E-CYCLE PAGE 4*

# Booklets Available

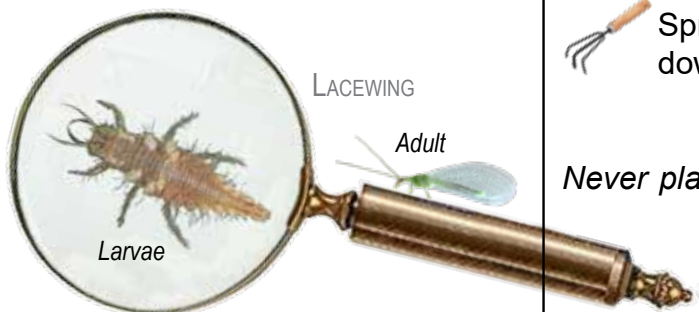
In PDF

[www.co.lincoln.or.us/solidwaste](http://www.co.lincoln.or.us/solidwaste)



Paper Copies may also be available at:

- Your local hauler
- Your local library
- Local garden centers
- Master Gardener™ events and displays



## Why Compost

Leaves, branches, fruits, vegetables and yard clippings do not need to be wasted. Instead, they can be composted into a rich garden soil amendment. Each year, composting helps our community divert significant tons of waste from being sent to the landfill.

Rather than throw nutrient-rich materials away, you can help make them into compost. Place yard debris and other organic items into any one of these systems:

- Curbside Roll Cart for Mixed Compostables
- Local Yard Debris Depot
- Home Compost Pile


Also, rather than buying chemical fertilizers, use finished compost. Compost is a critical ingredient for healthy soil. It benefits soil structure and plant growth by:


- Adding organic material into the soil, increasing biological activity, and storing critical organic nutrients.
- Promoting healthy plant growth by loosening clay soils, promoting root development, and supporting beneficial organisms which help plants to thrive and to resist against weeds, disease, and insects.
- Enhancing the capacity of soils to retain more moisture, as well as reducing erosion and water run-off.

Healthy soil not only helps to reduce the need for fertilizers, pesticides, and water in a garden, it assists garden plants to resist against pests, drought, weeds and diseases. Composting can be an important part of keeping your yard and garden vibrant and productive.

### Applying Compost

*Compost works best as a soil amendment.  
Do not put plants directly into 100% compost.*

 Spread compost about ½ inch deep across a garden bed as a mulch/ground cover, keeping the compost on top of the soil; or

 Spread compost about 2 inches deep and then mix the compost down into the soil.

**Remember!!**

*Never place any type of plastic (no matter what the label says) into local curbside mixed compostable recycling containers.*

## Gardening Without Creating HHW

*(Household Hazardous Waste)*

Each year, our community spends tens of thousands of dollars to properly dispose unwanted household hazardous waste. Also, what goes into a garden has an effect on our region's forests, rivers, and ocean ecosystems. Pesticides that wash into rivers, streams and the ocean have an impact on the bugs, the birds, the fish, and other animals far beyond someone's garden.

***Gardening can be successful without generating any HHW because it works in harmony with nature and the surrounding ecosystem.***

Local haulers and the Solid Waste District have teamed up with local Master Gardeners to develop successful and nature-oriented tips in a booklet called *Pests & Insect Heroes*. Get your copy to learn how to use far less of these toxic and hazardous products.

*THERE IS MORE*

*HHW EVENT INFORMATION ON PAGE 3  
KID STUFF ON PAGES 6 & 7*



# HHW Event

On Saturday, July 27, 2024, Lincoln County residents can properly dispose of household hazardous waste at no charge at the annual Household Hazardous Waste Collection Event. The event rotates between Lincoln City, Newport, Toledo and Waldport each year.

The 2024 Household Hazardous Waste Event will be held at:

**Thompson's Sanitary Service**  
 - Newport -  
 7450 NE Avery St, Newport

Materials accepted at the HHW Collection Event will include:

- **Poisons** such as pesticides, herbicides, fungicides and other poison.
- **Heavy Metals** such as mercury containing elemental mercury.
- **Corrosives** such as acids, bases, and reactives.

A few reminders:

- ⊘ No containers larger than 5 gallons in capacity.
- ⊘ No cylinders accepted (contact your hauler for local options).
- ⊘ No sharps or other medications (contact your hauler for local options).
- ⊘ No explosives: such as bullets, fireworks, flares/aerial flares.

## Please Be Safe!

When handling hazardous household waste, safety is essential. Properly prepare materials:

- Keep products in their original containers whenever possible. Ensure containers are labeled.
- If a container is leaking, secure it in a secondary leak-proof container. Please do not put items in plastic bags
- Products should not be mixed into one container! Dangerous reactions can occur when some materials are combined.
- Box up materials and seal lids tight to prevent rolling around in your trunk while driving and to prevent spills or dangerous mixing of hazardous materials.
- Pack containers in sturdy boxes and secure in the trunk of your vehicle, away from the driver, passengers, and pets. Containers and boxes, including gasoline cans, cannot be returned.



# Cannot Wait for an Annual HHW Event?

If you are unable to make the annual event in Lincoln County, there are HHW Facilities located around the state. It is a good idea to contact them ahead of time for hours and potential fees. Below is a partial list and an expanded list to be found on our web page.

<https://www.co.lincoln.or.us/solidwaste>

### Marion County HHW Facility

Salem/Keizer Transfer Station:  
 3250 Deer Park Dr. SE, Salem  
 Thursdays, and 1st and 3rd Tuesdays of the month  
 8:00 a.m. - 3:30 p.m.  
[www.co.marion.or.us](http://www.co.marion.or.us)

### Lane County

**Glenwood Transfer Station**  
 Please call (541) 682-4120  
 to make an appointment  
[www.lanecounty.org](http://www.lanecounty.org)

### Tillamook County Transfer Station

1315 Ekloff Road, Tillamook  
 Check web for available days and use the out-of-county-form  
[www.co.tillamook.or.us](http://www.co.tillamook.or.us)

# Local HHW Available Year-Round

Some hazardous waste items are accepted by local haulers year-round:

- » **Latex Paint**
- » **Batteries**
- » **Motor Oil**
- » **Antifreeze**
- » **Medical Waste**
- » **Propane Tanks** (decommissioned)
- » **Mercury** (Including thermometers and thermostats)
- » **E-waste** (including computers, monitors, keyboards & mice, printers, TVs, DVD players & VCRs, and speakers)

Please call ahead for specific items accepted, locations where accepted, times when open, and any special instructions.

# Keep Lithium Batteries Out of Trash and Recycling



## These Items

- ⊘ Lithium Batteries
- ⊘ Rechargeables
- ⊘ Button Batteries
- ⊘ Smart Phones
- ⊘ Power Packs
- ⊘ Laptops/Tablets

## Go here



No Batteries in Garbage or Recycling

# Old Tire Roundup

September 14, 2024

10:00 am - 2:00 pm

Only \$1 Tire

Tires accepted on or off the rim



**NEW**  
Bring 1 Monster Tire  
\$25 limit = 1



## Help Reduce Mosquito Habitats!

Lincoln County residents can properly dispose of old tires for \$1 per tire. And, this year, residents can also dispose of ONE, and only one, Monster Tire/Tractor Tire for \$25.

*This event is one day only*

*At all four local transfer stations*

**Saturday September 14, 2024  
from 10:00am – 2:00pm.**

The Old Tire Roundup has few simple rules and parameters:

- Tires accepted on or off the rim.
- Loads cannot be accepted from any business.
- Tires cannot be commercial tires.
- Loads cannot come from outside of Lincoln County.
- A load with a monster tire or tractor tire is limited to one monster tire/tractor tire - and only one.

*Please note - loads with lots of passenger tires are accepted at the Old Tire Roundup provided the aforementioned rules and parameters are followed. Transfer stations may monitor and document vehicles with large loads of tires.*

Improperly stored and illegally dumped tires can hold water where mosquitoes can incubate and hatch. Moreover, if left in the environment, old tires can leak toxic metals into waterways that impact fish and the whole food chain.

Residents and groups are encouraged to use this event to clear out old tires and properly dispose of them at only a fraction of the real cost.

The special event is sponsored by the Solid Waste District and local haulers. The tires that are collected at the event will be recycled.

Please clean tires of mud & debris before you bring them in.

### A few reminders:

- ✓ **Clean Tire of mud & debris before bringing them in.**
- ✓ **Maximum 1 Monster Tire or 1 Tractor Tire**
- ✗ **No Commercial Tires**
- ✗ **No Commercial Loads of Tires**
- ✗ **No more than one Monster Tire/Tractor Tire**

## E-CYCLE

*Continued from Page 1*

The E-cycles program has locations across Oregon to recycle and dispose of this select group of devices which have valuable materials that can be recycled into new products. Electronic devices may also contain toxic materials such as lead, cadmium and mercury. Taking your device to e-cycles location helps to ensure your device is handled properly and these harmful toxins are kept out of our air, soil and water.

Oregon E-Cycles is an example of a product stewardship program, where the company that makes the device is responsible for recycling their products. Manufacturers must then embed the costs of recycling their products as part of the cost of doing business. DEQ maintains a list of manufacturers and their compliance status for this purpose.

Oh, and remember to remove any personal information stored on computer hard drives before taking devices to an E-cycles location.

If you are not familiar with the program or would like more information, give your local hauler (listed on the back of this newsletter) a call for details and drop off hours.

## The Best of ReUse! Checkout The Library of Things

When it comes to reuse, there is hardly a better example than your local library. Now many libraries are offering a LIBRARY of THINGS. Each library is unique in their program, but your library card now get can you a whole lot more than books, movies, and music. Here are few things our Coastal Character crew found at different libraries around the County:

- Tickets (local attractions/events)
- Birdwatching Kit
- Laptops
- Sports Equipment: Pickle Ball, Basketball, Disc Golf Sets,
- Fishing gear
- Lawn Games: Bocce Ball
- Juggling sets
- Board Games
- Community Litter Cleanup Kit
- Art Kits
- Skateboard Repair kits

Want to check out more? Contact your local library!



### KID STUFF ANSWER KEY

M	Y	E	L	L	O	W	J	A	C	K	E	T	D	P
N	I	B	U	G	A	B	O	O	V	S	N	A	E	R
D	N	B	U	G	O	F	F	W	N	S	P	B	A	
A	M	B	U	S	H	B	U	G	B	U	O	Y	U	Y
M	E	L	T	L	U	R	U	G	L	L	G	I		
S	O	A	E	S	P	Y	F	D	N	G	N			
E	V	G	D	L	P	L	R	I	B	E	G			
L	B	Y	A	P	F	I	E	W	E	U	D	M		
B	B	E	N	W	R	E	R	G	V	A				
U	A	U	O	O	E	C	A	R	B	G	H	N		
G	G	F	G	L	D	A	U	T	E	Y	U	T		
M	A	F	I	L	E	S	T	E	R	M	I			
U	R	P	L	B	U	G	O	T	B	S				
D	A	S	E	T	F	L	Y	D	G	L	R	U	G	
J	I	T	T	E	R	B	U	G	N	Q	E	W	G	

#### Extra Credit:

- Volkswagen Beetle = **VWBUG**
- Herbie #53; Movie Star(?) in the 1960's = **LOVEBUG**
- 1940's dance to swing music = **JITTERBUG**
- Speak falsely; Something Scrooge might say a lot, Bah = **HUMBUG**
- To have a cold; catch the = **FLU BUG**
- Detected and removed a computer error = **DEBUGGED**
- A rapid military retreat = **BUG OUT**
- A small open top vehicle - think horse and = **BUGGY**
- Rude way to say: "go away" = **BUG OFF**
- Another name for the imaginary hobgoblin; a character in role playing games (RPGs) = **BUGBEAR**

#### Extra, Extra Credit:

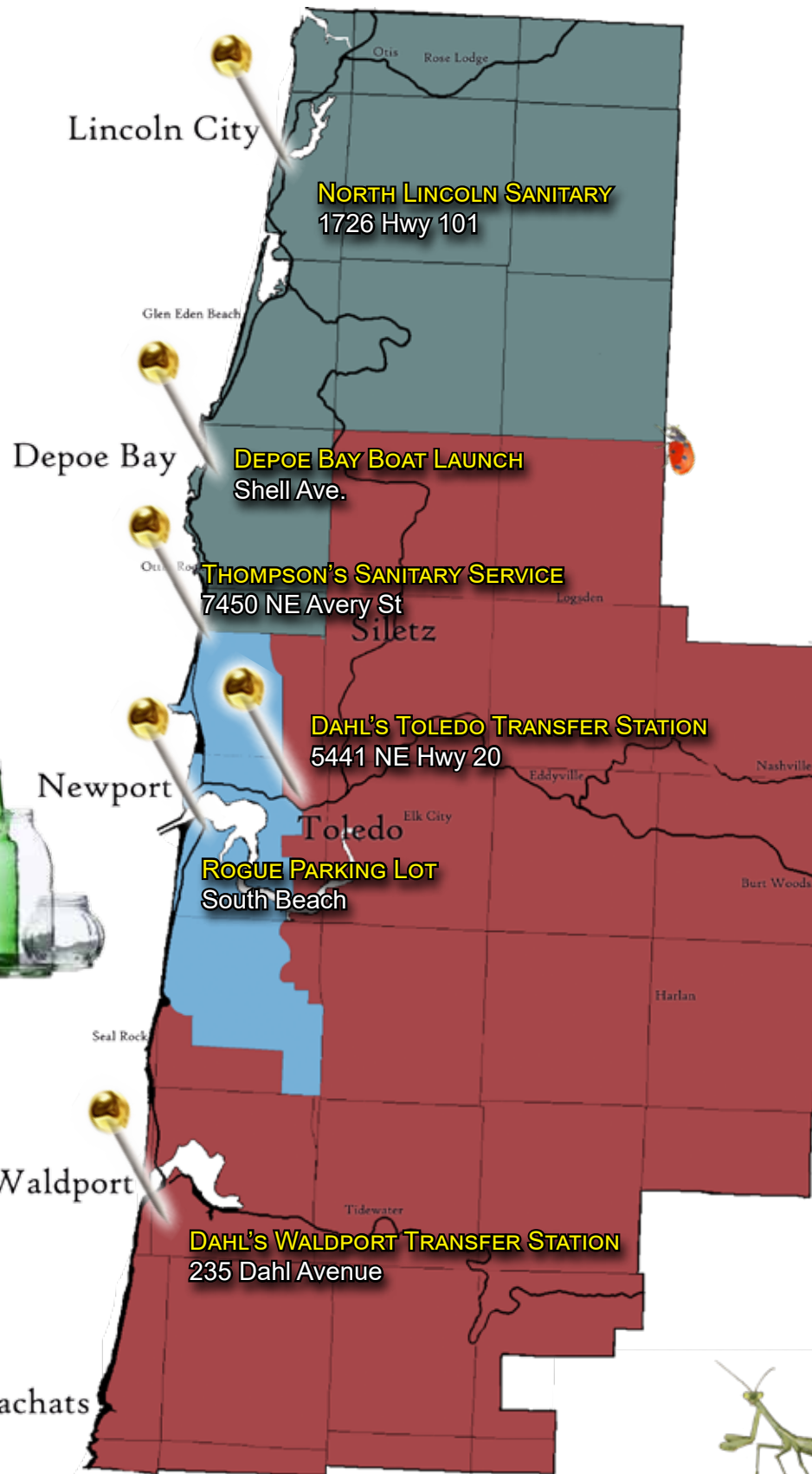
- To catch 'the bug,' be = **ILL**
- A serious **bug** in a system that needs to be fixed = **FLAW**
- **Bugging** a phone line = **TAP**
- The act of **bugging** some to the point where they are bothered = **ANNOY**
- **Bugging** someone with pointless intention = **PESTER**
- The act of really, really, really **bugging** someone = **IRK**

# Glass Recycling Depots in Lincoln County

## Map of Glass Recycling Depots in Lincoln County

*Please contact your local hauler for  
detail, hours, and preparation instructions.*

**Glass recycling includes bottles and jars  
only**



- A LADYBUG on every page  
5 LACE WINGS  
• On page 1 - Adult, just above "A Peek Inside"  
• On page 2 - (there are 3) An Adult and Larvae in/on the Magnifying glass; and an Adult on cover of booklet  
• Page 6 - Adult, next to Word Hunt Puzzle  
3 FLOWER FLIES  
• Front cover top right  
• On page 2 - On cover of booklet  
• On page 6  
3 AMBUSH BUGS (ASSASSIN BUGS)  
• Front cover top left  
• On page 2 - Under the hat  
• On page 6  
3 DAMSEL FLIES  
• Front cover left panel  
• On page 6  
• Back cover top right  
3 DRAGON FLIES  
• Front cover bottom left panel  
• On page 4 - by the fish  
• On page 6  
3 PRAYING MANTIS  
• Front cover left panel on tire  
• On page 5 - Below map  
• On page 6

KID STUFF ANSWER KEY CONTINUED

## Why Recycle

When we recycle, properly prepared recyclables become resources that manufacturers use to make new products. Moreover, many of these recycled materials are a significant benefit to the manufacturing process. Then, as a manufacturer makes long term plans to place a recycled material into their product design, they create a stable recycling market.

Items which have stable recycling markets are the backbone of the curbside recycling program. Currently this includes:

- Paper & Cardboard
- Metals
- Plastic Bottles and milk jugs

These clean recycled materials become competitive resources in the world market for making new products.

When you recycle something in this market – rather than discarding it into the trash – it does a lot of good things:

- It saves landfill space
- It often reduces the amount of energy needed to make a new product, saving money and natural resources used to power that process
- It reduces the number and kinds of raw materials that go into new products from natural resources. It also reduces the processes needed to mine/extract/grow and transport those natural resources all over the world.
- It reduces potential carbon emissions from energy used in power manufacturing and transporting raw materials.

When we reduce and reuse, we can go a little further to eliminate waste in the first place -

*Use a shopping list.*

*Avoid products with excessive packaging.*

*Remember to carry your reusable shopping bags.*



# KID STUFF



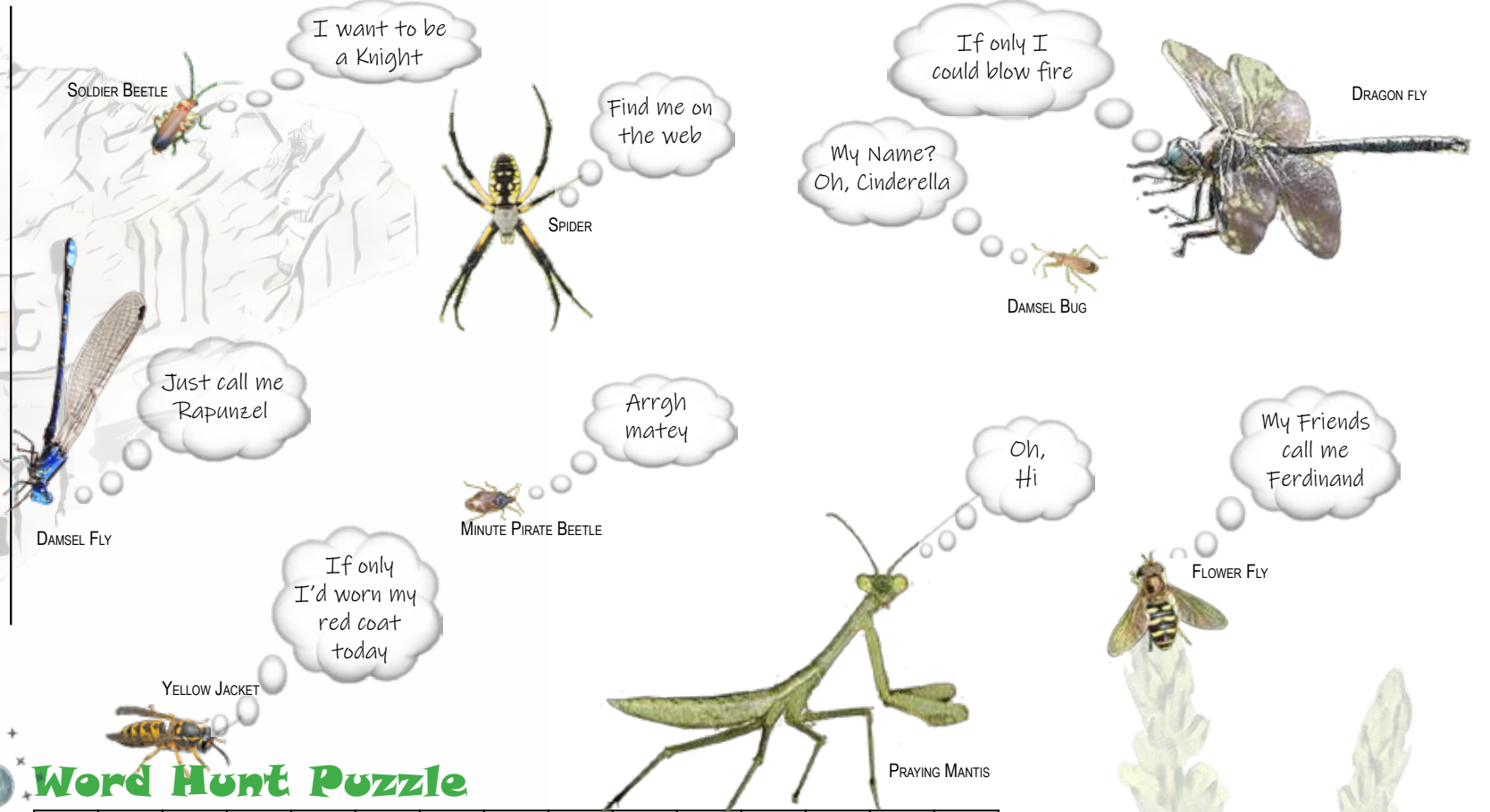
## Focus on Insect HEROES

### What Lurks Behind Your Castle?

The next time you are out running around the snap dragons in your garden, you might just find some medieval characters.

What's in a name??? On this page we found:

- 3 Dragons
- 2 Damsels
- 1 Lady
- 1 Pirate
- 1 Assassin



### Word Hunt Puzzle

M	Y	E	L	L	O	W	J	A	C	K	E	T	D	P
N	I	B	U	G	A	B	O	O	V	S	D	A	E	R
D	Q	N	B	U	G	O	F	F	W	N	S	P	B	A
A	M	B	U	S	H	B	U	G	B	U	O	Y	U	Y
M	L	B	L	T	F	L	U	B	U	G	L	U	G	I
S	O	U	A	F	E	S	P	Y	G	F	D	N	G	N
E	V	G	D	L	R	P	L	I	R	K	I	B	E	G
L	E	B	Y	A	R	F	I	E	X	W	E	U	D	M
B	B	E	B	W	N	N	W	R	E	O	R	G	V	A
U	U	A	U	O	Y	O	E	C	A	R	B	G	H	N
G	G	R	G	O	L	D	A	T	U	T	E	Y	U	T
M	P	A	N	F	I	L	P	E	S	T	E	R	M	I
U	R	N	E	P	L	B	U	G	O	U	T	B	B	S
D	A	M	S	E	L	F	L	Y	D	G	L	R	U	G
J	I	T	T	E	R	B	U	G	N	Q	E	W	G	G

### Word Hunt I

In the Word Hunt Puzzle you may just a few bugs hiding. Look up, down, cross-ways, and side-to-side



#### WORDS TO FIND

- AMBUSH BUG
- DAMSEL BUG
- DAMSEL FLY
- DRAGON FLY
- FLOWER FLY
- LACEWING
- LADYBUG
- MINUTE PIRATE BEETLE
- PRAYING MANTIS
- SOLDIER BEETLE
- SPIDER
- YELLOW JACKET



# Take a Closer Look

## Lady Bug Babies

Not every bug is as cute as their parents. Larvae (the baby form of many bugs) often look very different than the adult. At first glance, some larvae are outright frightening.

Even though these babies have a monstrous appearance, don't be reaching for the bug spray. In order to have cute ladybugs, (or many of the other garden superheroes), they need to hatch from an egg and go through their life stages - just as they are.

Superhero babies are beneficial just like the adults. Many of them eat more pests as youngsters than they do as adults.



## GARDEN PREDATORS = Insect HEROES

There are a lot of bugs out there. But before you squish that next creepy crawly thing in your garden, you might want to take a better look. That bug just might be one of your garden's superheroes!

Yes, there are garden pests (apple maggots and aphids that can ruin a garden harvest), but not everything that crawls around in your garden is a bad thing. For superheroes, what we call garden pests are simply a lunchtime snack. This is what makes them so super.

Given the chance, the beneficial bugs will reduce or eliminate the pests, diseases, and fungi that cause harm to your garden plants; and they do so naturally. Best of all, there is nothing buy or spray. They simply show up, and they don't charge for any of their pest control services.

So, take a deeper look. Your garden is much more than just a place for plants. It is a whole ecosystem feeding tiny microbes, bugs, animals, and ultimately the whole world around us. All of this put together is what contributes to making your garden green, lush, and vibrant.

It is also good to remember that what goes into your garden has an impact on other bugs, birds, fish, and animals. Gardening with nature in mind has positive impact on our forests, rivers, and ocean ecosystems.

## Just A Few MORE BUGS to Catch

What's in a word? There are a few more 'bugs' in the world than just arthropods and insects. And for those with a sharp eye, you may have already noticed that there are a few more 'bugs' in the Word Hunt Puzzle (page 6).

### Word Hunt II

Extra Credit: For those who want a little more challenge - Our crew discovered a few words that have '**bug**' in them, but their meanings are *not* necessarily related to creepy-crawly things. Can you find words in the Word Puzzle (page 6) based upon these hints?

*(We've revealed the first clue as an example)*

- An obsession of dread; or a name for the imaginary hobgoblin = **BUGABOO**
- Volkswagen Beetle
- Herbie #53; Movie Star(?) in the 1960's
- 1940's dance to swing music
- Speak falsely; Something Scrooge might say a lot, Bah \_\_\_
- To have a cold; catch the \_\_\_
- Detected and removed a computer error
- A rapid military retreat
- A small open top vehicle - think horse and \_\_\_
- Rude way to say: "go away"
- Another name for the imaginary hobgoblin; a character in role playing games (RPGs)

### Word Hunt III

Extra, Extra Credit: For those who really demand a hard challenge - Our crew discovered even more bugs in our Word Puzzle (page 6). Look for words that *do not* have '**bug**' in their letters, but have **bug** in their meaning: *(We've revealed the first clue as an example)*

- Computer bug (Abbr) = **ERR**
- To catch 'the **bug**,' to be \_\_\_
- A serious **bug** in a system that needs to be fixed
- **Bugging** a phone line
- The act of **bugging** someone to the point where they are bothered
- **Bugging** someone with pointless intention
- The act of really, really, really **bugging** someone

### Hero Photo Hunt

Search for bug shots around this newsletter:

- A LADYBUG on every page
- 5 LACE WINGS (Hint 1 is a Larvae)
- 3 Flower Flies
- 3 Ambush Bugs (Assassin Bugs)
- 3 DAMSEL FLIES
- 3 DRAGON FLIES
- 3 PRAYING MANTIS

ANSWERS

SOLUTIONS ON PAGE 5

LEARN MORE ABOUT PESTS & INSECT HEROES

GARDENING WITHOUT CREATING HHW PAGE 2



# Curbside Recycling

Your hauler is the best resource for what can go into – and what to keep out of – your commingled recycling roll cart. Help make recycling a success:

- Paper and Cardboard**  
**YES.** Place paper and cardboard into the commingled recycling roll cart. *Paper that is in contact with food or has waxy/plastic coatings go into the garbage roll cart.*
- Plastic Bottles and Milk Jugs**  
**YES.** Place plastic bottles with a neck smaller than the base into the commingled recycling roll cart. *All other types of plastics go into the garbage roll cart.*
- Metals and Cans**  
**YES.** Place tin and aluminum cans into the commingled recycling roll cart. *Wire and coat hangers go into the garbage roll cart.*

Properly prepared recyclables become the resources manufacturers use to make new products.

*When in Doubt, Toss it Out*

**Watch for recycling updates coming in 2025 as Oregon implements the Recycling Modernization Act**

# Curbside Recycling

Paper & Cardboard



Metals & Cans



Plastic Bottles & Milk Jugs



Apple



Google Play

**DAHL DISPOSAL APP**



**NORTH LINCOLN SANITARY APP**



**THOMPSON'S SANITARY APP**

## Coastal Character

*is the marquee of the Lincoln County Sustainability Program and is a recognition of the folks (residents, businesses, and visitors alike) who are making a difference in our community – locally, naturally, and sustainably*

## The Coastal Character Newsletter

A Cooperative Sustainability Program of the Lincoln County Solid Waste District, including the cities of Depoe Bay, Lincoln City, Newport, Siletz, Toledo, Waldport, and Yachats; Dahl Disposal Service; North Lincoln Sanitary Service, Thompson's Sanitary Service; and Lincoln County.

—————

**Lincoln County  
Solid Waste District**  
(541) 574-1285  
solidwaste@co.lincoln.or.us

—————

*Articles provided for local city newsletters throughout the year*