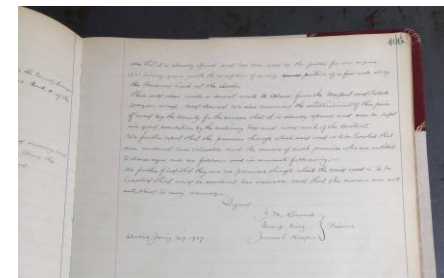
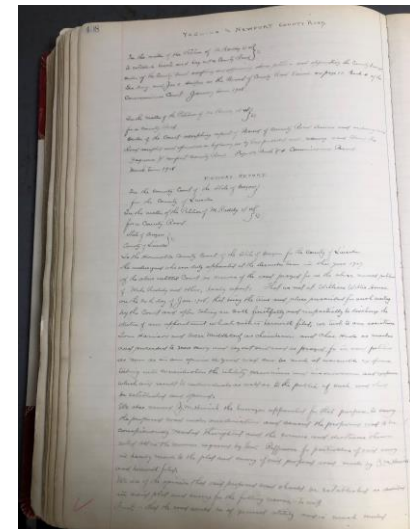
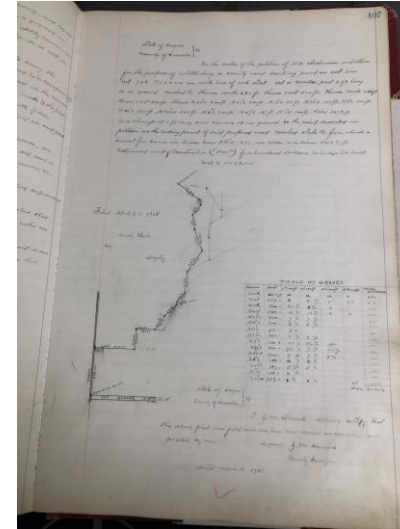
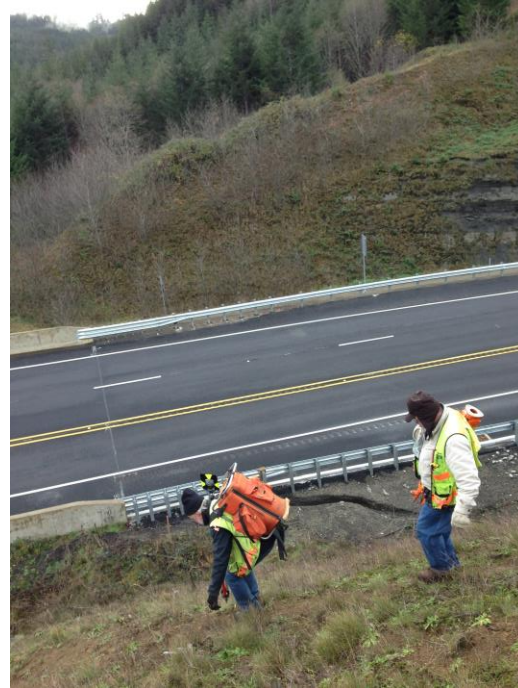


Surveyor, GIS, and Property Management

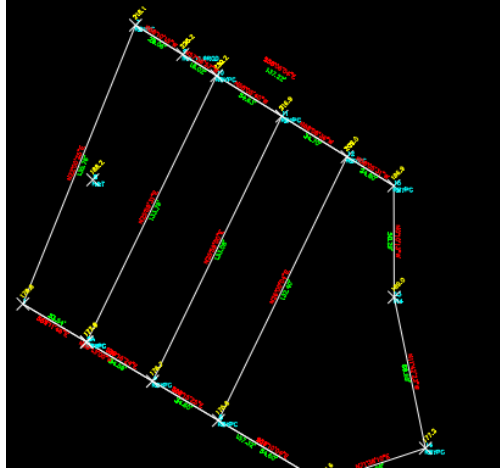
- Overview
 - Three functional departments with two general fund budgets and three non-general fund budgets
 - The Surveyor's Office has many statutory duties, mostly pertaining to review of surveys and plats, maintaining the Public Land Survey System (PLSS) corners, and running a research library.
 - Geographical Information Systems (GIS) is an internal support department with a strong focus on the Assessor's, Clerk's, Sheriff's, Surveyor's, and Commissioners' Offices and Public Works, Planning, Legal, and other departments.
 - The Surveyor's Office reviewed and filed over 150 surveys, subdivisions, and partition plats this year
 - GIS provided accessible public information to 3,000 (internal and external) users a month.
 - Property Management started classification of the County's property inventory

Surveyor's Office Activities

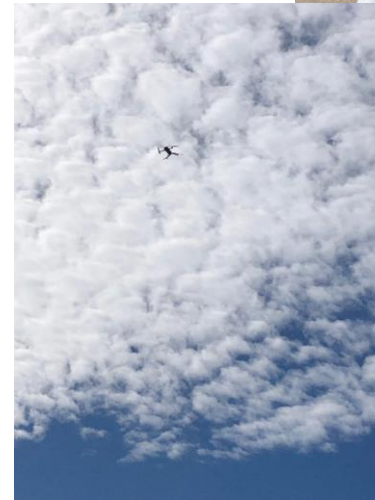
- Accomplishments FY 2022/23
 - Reviewed surveys and partitions. Reviewed and checked subdivisions.
 - Public Land Survey System (PLSS) – corner perpetuation (Fund 217)
 - Provided land record information to residents



Surveyor's Office Activities

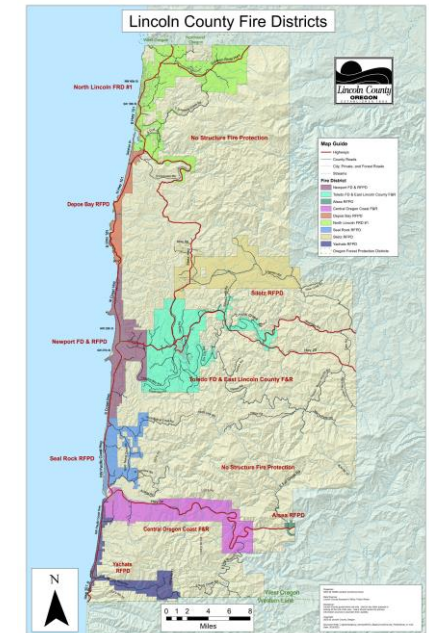
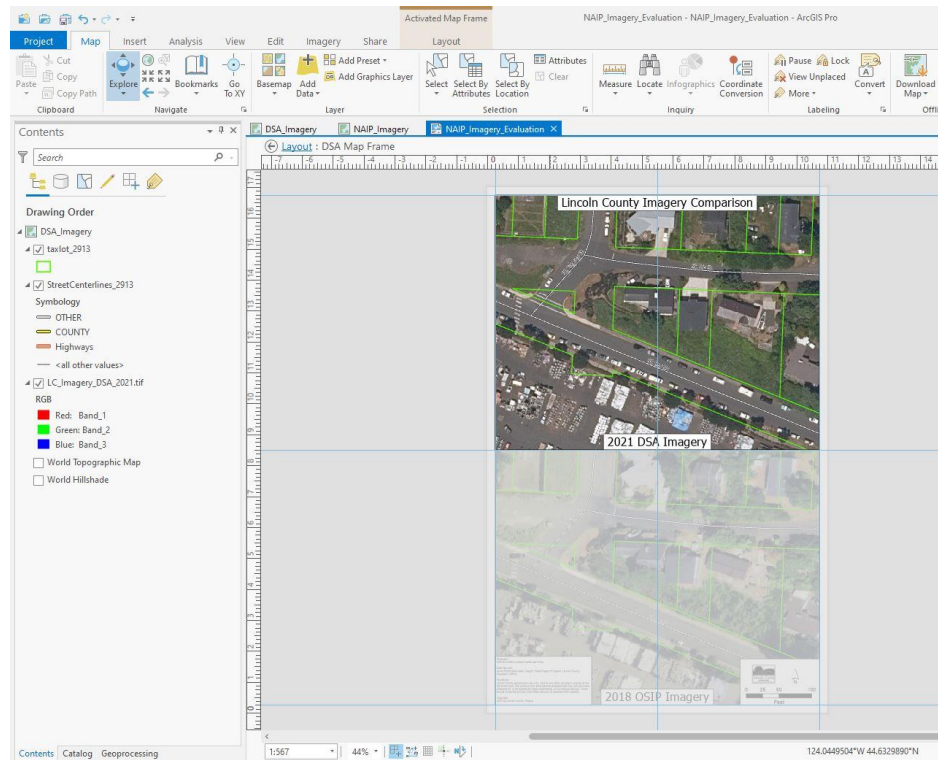
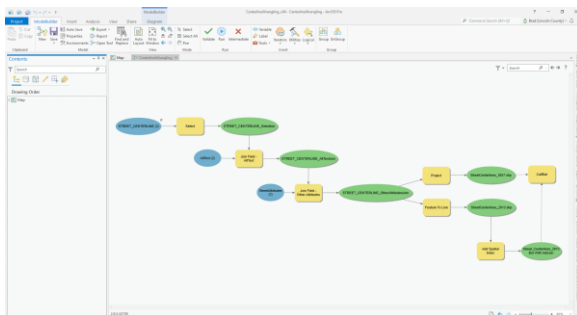
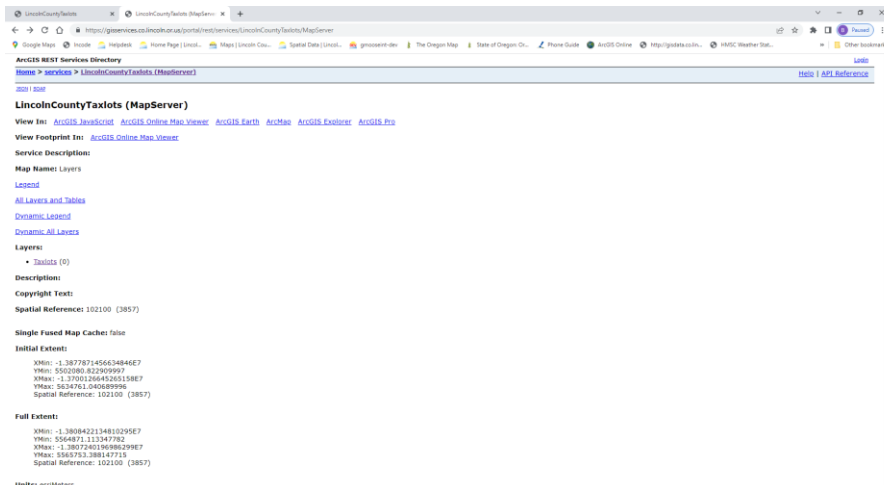


Surveyor's Office Activities



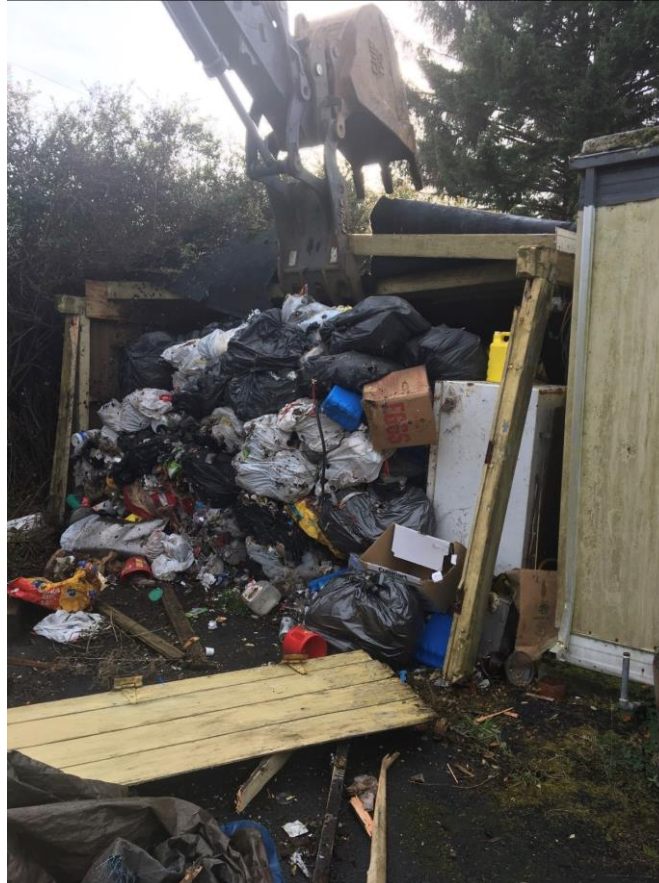
GIS Department Activities

- Supported internal users and departments
 - Over 100 users a day on <https://maps.co.lincoln.or.us>
 - 10 trainings for 50 employees from 7 departments and offices
 - Aerial imagery processing (fund 105)



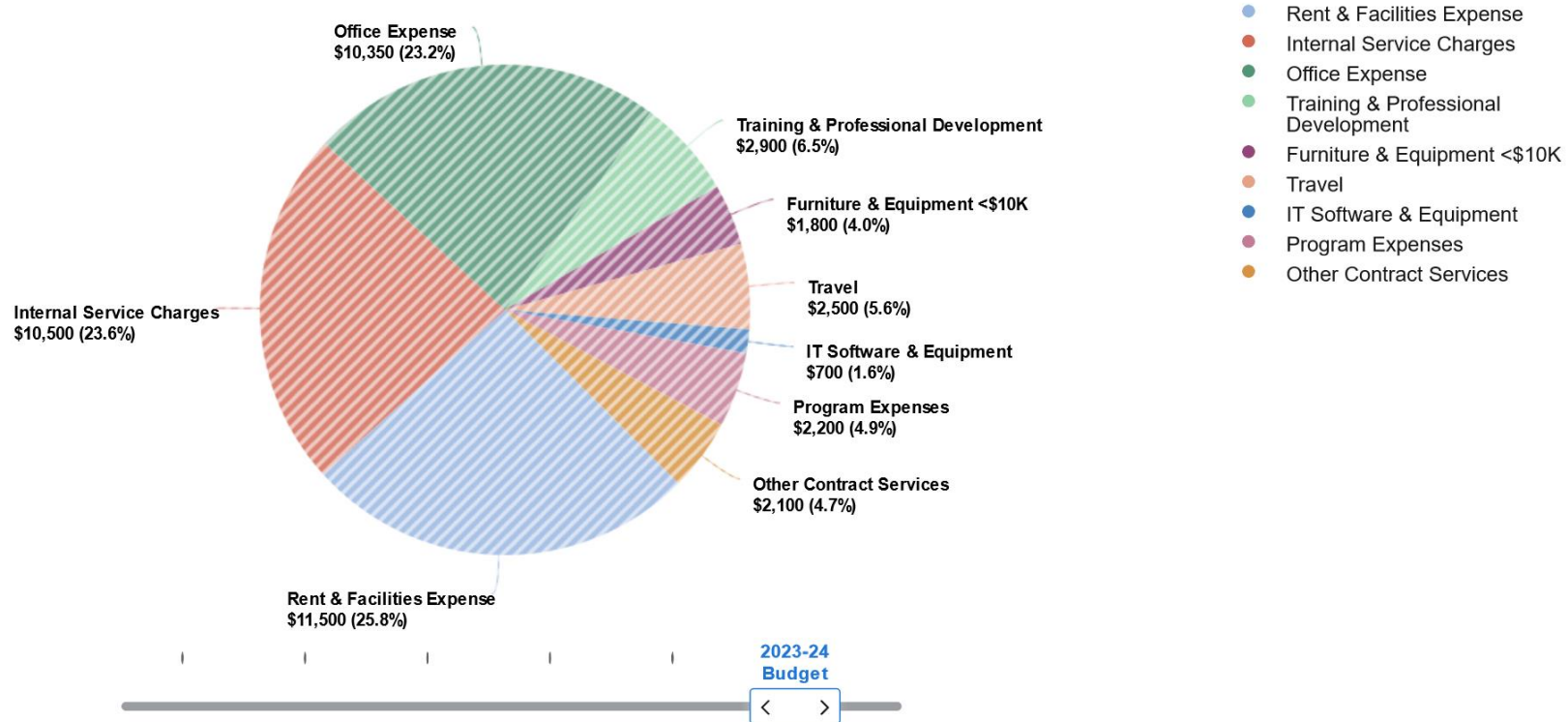
Property Management Activities

- Sold (and deeded) properties totaling \$103,295
 - Inventoried properties, visited properties, cleaned up properties, sold properties
 - Work with partner agencies for diversion opportunities
 - Fund 111



Surveyor's Office Expenses

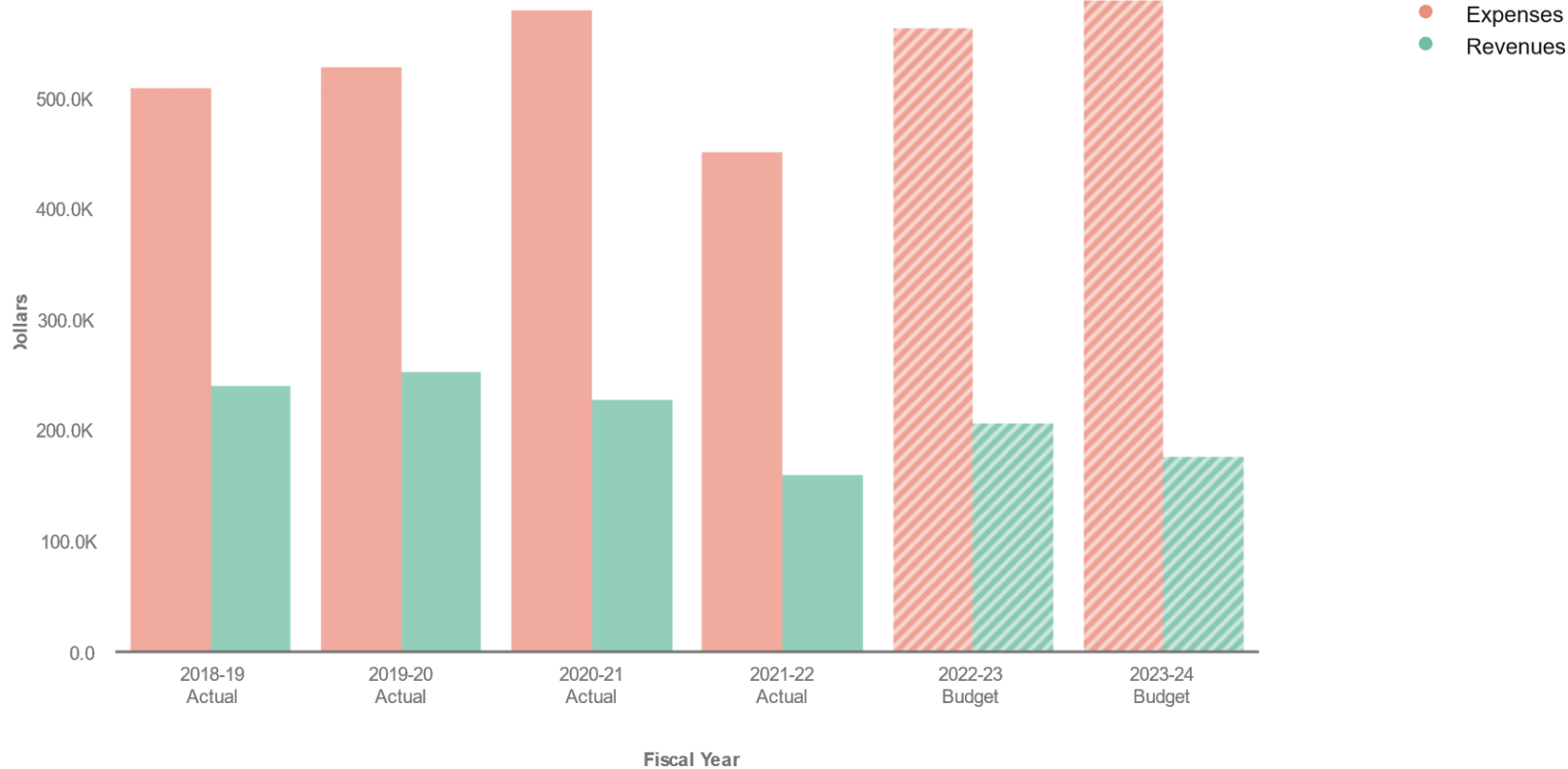
Visualization



Data filtered by Materials & Services, General Fund, Departments and exported on May 1, 2023. Created with OpenGov

Surveyor's Office History

Visualization

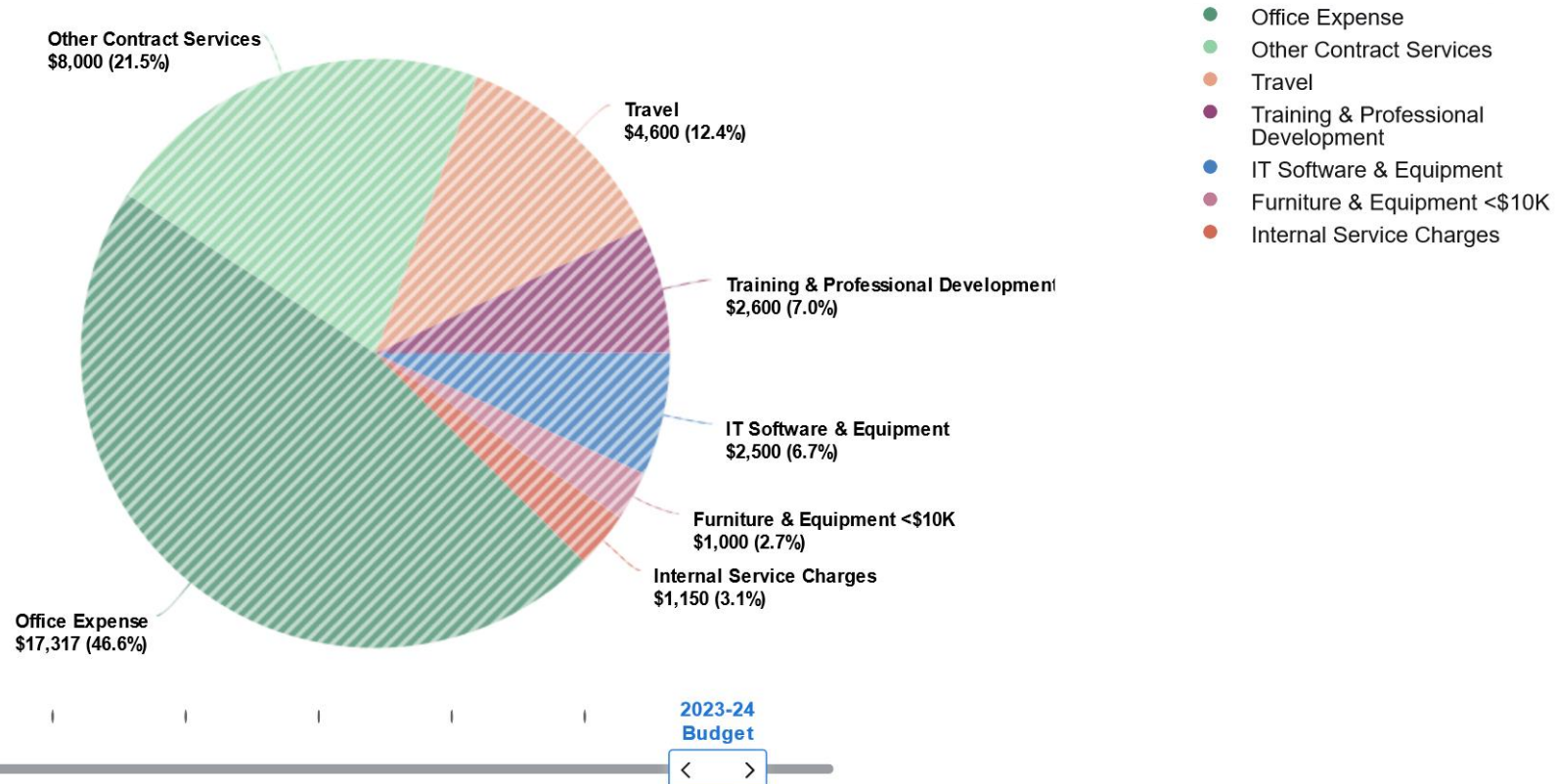


Data filtered by Types, General Fund, Departments and exported on May 1, 2023. Created with OpenGov



GIS Department Expenses

Visualization

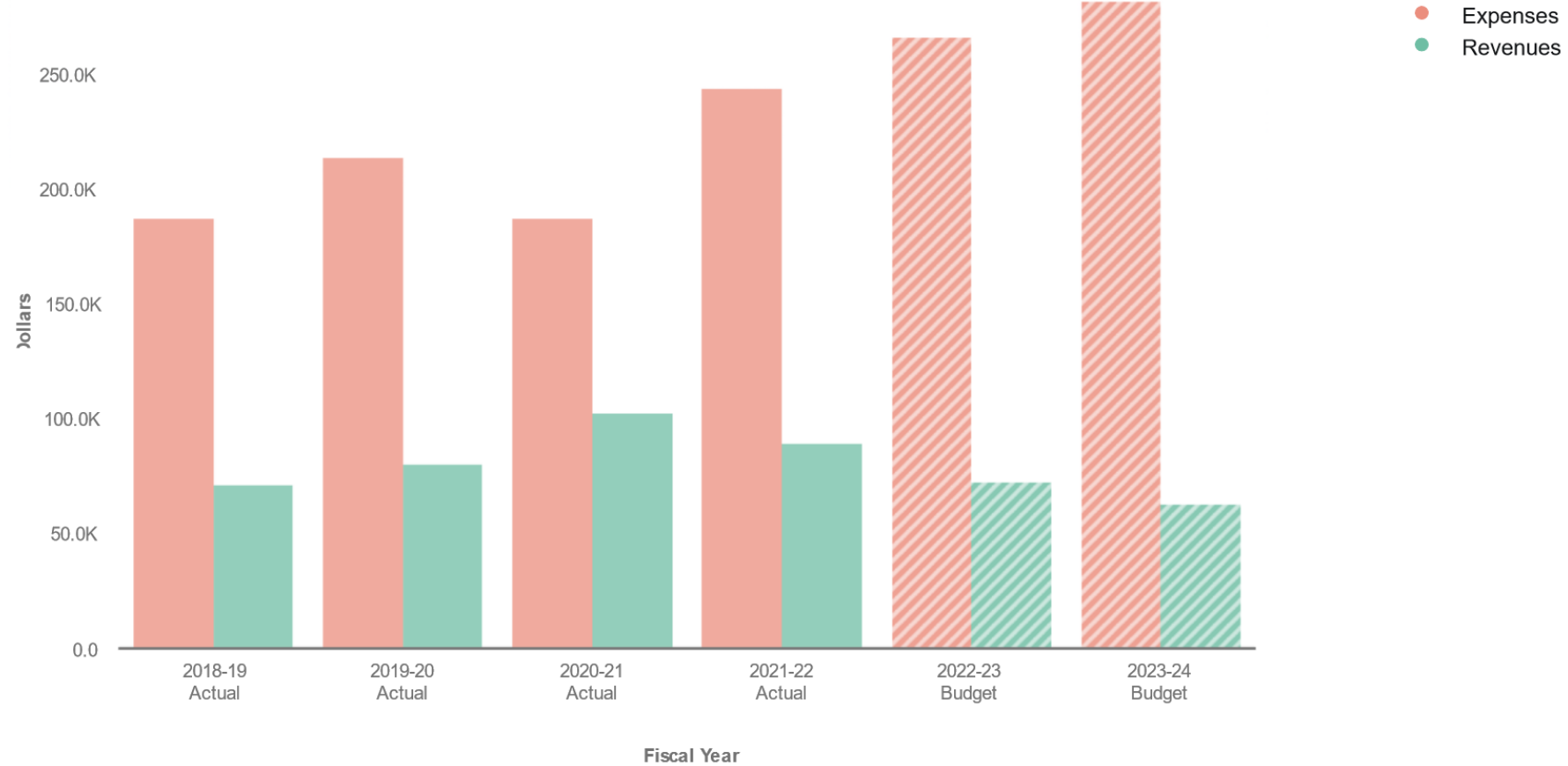


Data filtered by Materials & Services, General Fund, GIS Services and exported on May 1, 2023. Created with OpenGov



GIS Department History

Visualization

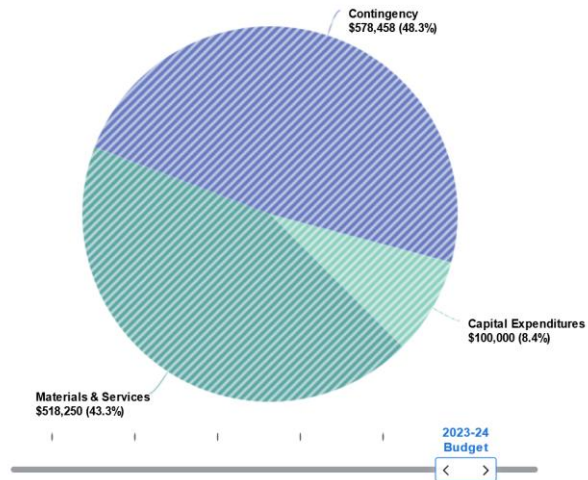


Data filtered by Types, General Fund, GIS Services and exported on May 1, 2023. Created with OpenGov



Property Management Expenses

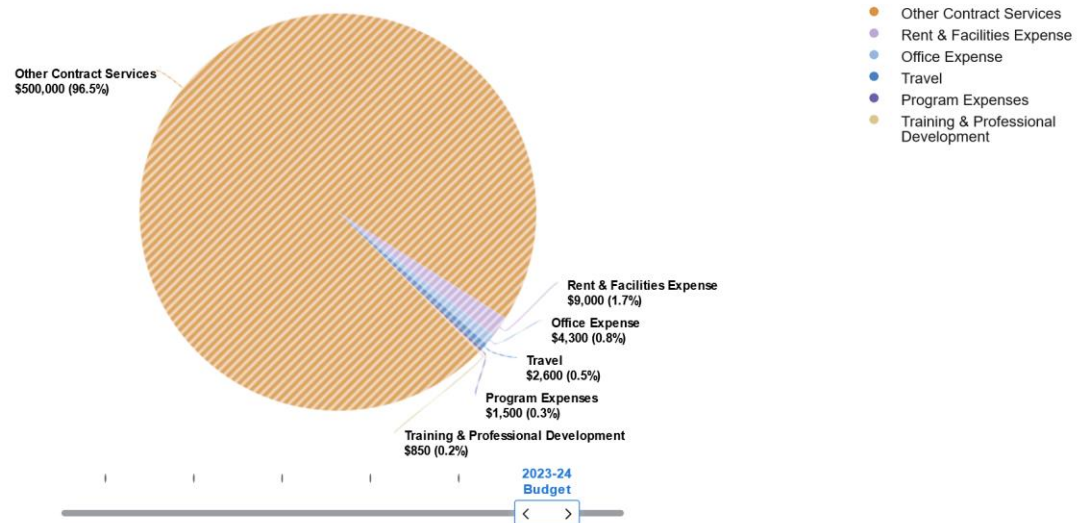
Visualization



- Materials & Services
- Contingency
- Capital Expenditures

Data filtered by Expenses, Property Management, Property Management and exported on May 3, 2023. Created with OpenGov

Visualization

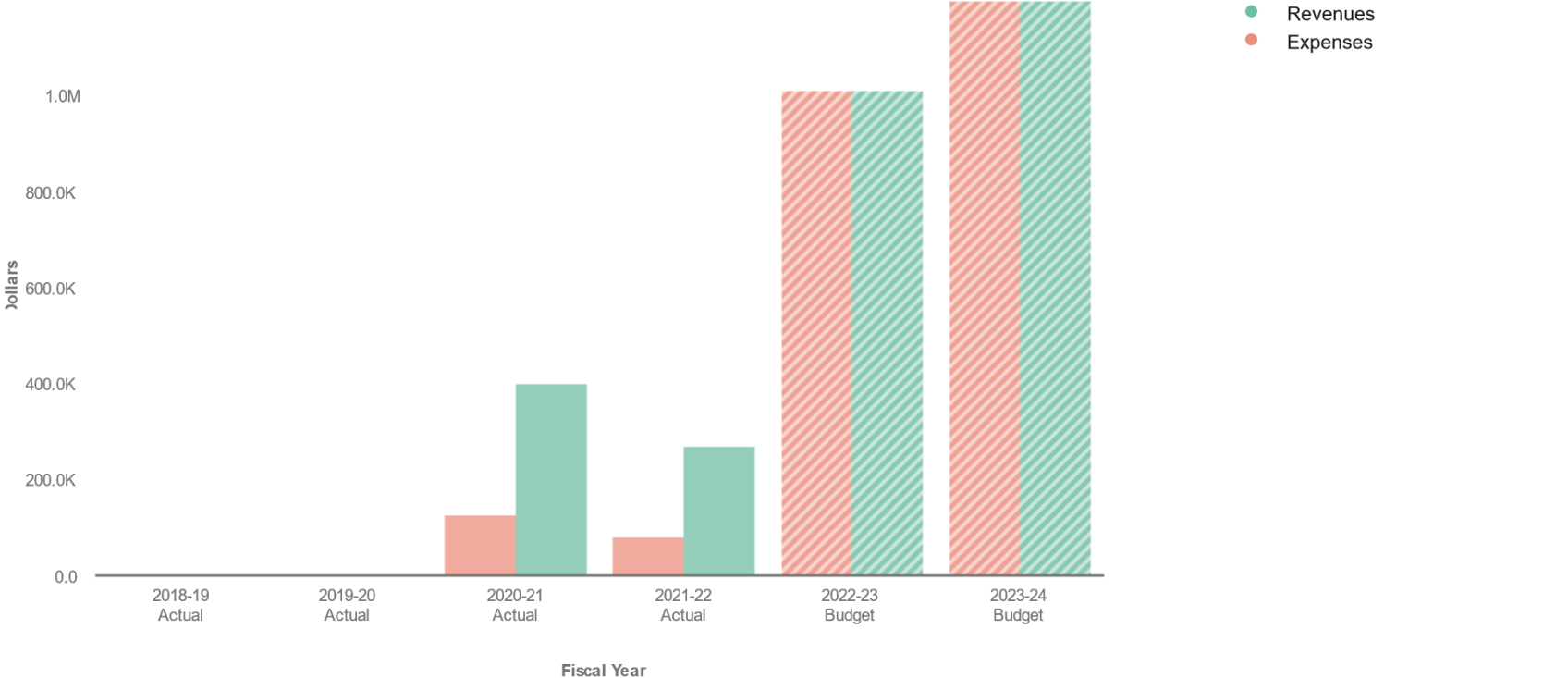


- Other Contract Services
- Rent & Facilities Expense
- Office Expense
- Travel
- Program Expenses
- Training & Professional Development

Data filtered by Materials & Services, Property Management, Property Management and exported on May 3, 2023. Created with OpenGov

Property Management History

Visualization

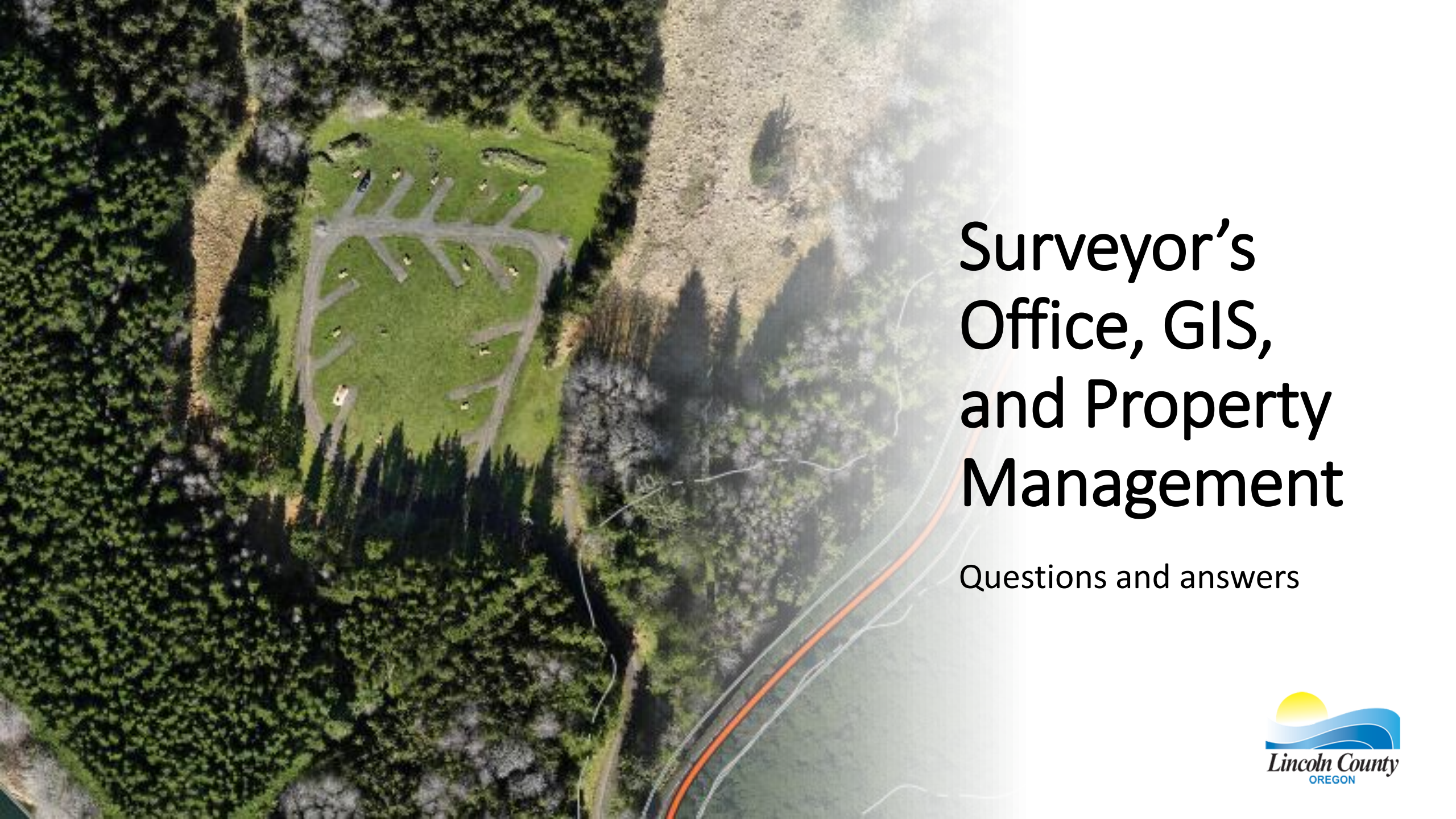


Data filtered by Types, Property Management, Property Management and exported on May 3, 2023. Created with OpenGov



Surveyor's Office, GIS, and Property Management

- Future Achievements
 - Surveyor's Office: continue statutory requirements, survey road legalizations, improve geodetic control for the Assessor's Office Cartography Division and aerial imagery, and providing land record information to residents
 - GIS: Continue frequent data processing and online data updates, develop sustainable funding mechanism and partnerships for geodata over multiple years, and migrate to current software for internal GIS
 - Property Management: Continue keeping inventory current, continue cleaning and selling tax foreclosed properties, transfer properties to other agencies when appropriate.

An aerial photograph of a forested area. In the upper left, there is a parking lot with several cars parked. The surrounding area is densely forested with green trees. A road or path runs through the center of the image, and a red line is visible on the right side, possibly indicating a boundary or a specific feature. The overall scene is a mix of natural forest and developed areas.

Surveyor's Office, GIS, and Property Management

Questions and answers