

**Instructions To Voter
Use A Pencil or Pen
(Blue or Black Ink)**

To ensure your vote counts, completely fill in the oval to the left of the response of your choice.

To write in a name, write the name on the solid line and fill in the oval to the left of the write-in line.

Attention!

Remember to inspect your ballot for mistakes! If you make a mistake or damage your ballot, call your County Elections Office to ask for a replacement ballot.

Proposed New Bridge Special Road District

Commissioner, Position 1
Four Year Term
Vote for One

Linda C Halladay

Write-in

Commissioner, Position 2
Two Year Term
Vote for One

Gerald M Gomoll

Write-in

Commissioner, Position 3
Four Year Term
Vote for One

Marsha Fall

Write-in

City of Waldport

Council Member
Unexpired Term Ending December 31, 2016
Vote for One

Richard M Nyhus

Bob O'Brien

Write-in

City of Newport

**21-152 General Obligation Bonds for
New Indoor Municipal Swimming Pool**

Question: Shall the City of Newport authorize \$7.9 million in General Obligation bonds for a new indoor municipal swimming pool?

If the bonds are approved, they will be payable from taxes on property or property ownership that are not subject to the limits of sections 11 and 11b, Article XI, of the Oregon Constitution.

Summary: The city would issue up to \$7.9 million of General Obligation bonds for a new indoor municipal swimming pool and related systems, facilities, and improvements, and to pay fees associated with issuing the bonds. The bonds may be issued in more than one series and each series would mature over a period not to exceed 20 years.

The current plan is that the new pool would be located adjacent to the existing Newport Recreation Center and share resources with the Center including locker rooms, control desk, security, and parking. The current planned location of the new pool would not require the acquisition or purchase of property by the city.

Yes

No

Lincoln County Measure

21-153 Changes selection of Board of Commissioners from partisan to nonpartisan

Question: Shall Ordinance #469 be approved changing mode of selection of elected Lincoln County Board of Commissioners from partisan to nonpartisan?

Summary: Under current state law the Board of County Commissioners offices are elected on a partisan basis. The Board of Commissioners adopted Ordinance #469 on August 14, 2013 which changes the mode of selection of these offices to nonpartisan elections. That Ordinance can only go into effect if it is approved by the voters of Lincoln County. A "yes" vote approves of the Ordinance and changes the selection method from partisan to nonpartisan starting January 1, 2014. A "no" vote keeps the current partisan mode of selecting Commissioners in place.

Yes

No

Proposed New Bridge Special Road District

21-154 Formation of New Bridge Special Road District

Question: Shall this road district be formed with a tax rate limit of \$1 per \$1000 assessed property value beginning 2014-2015?

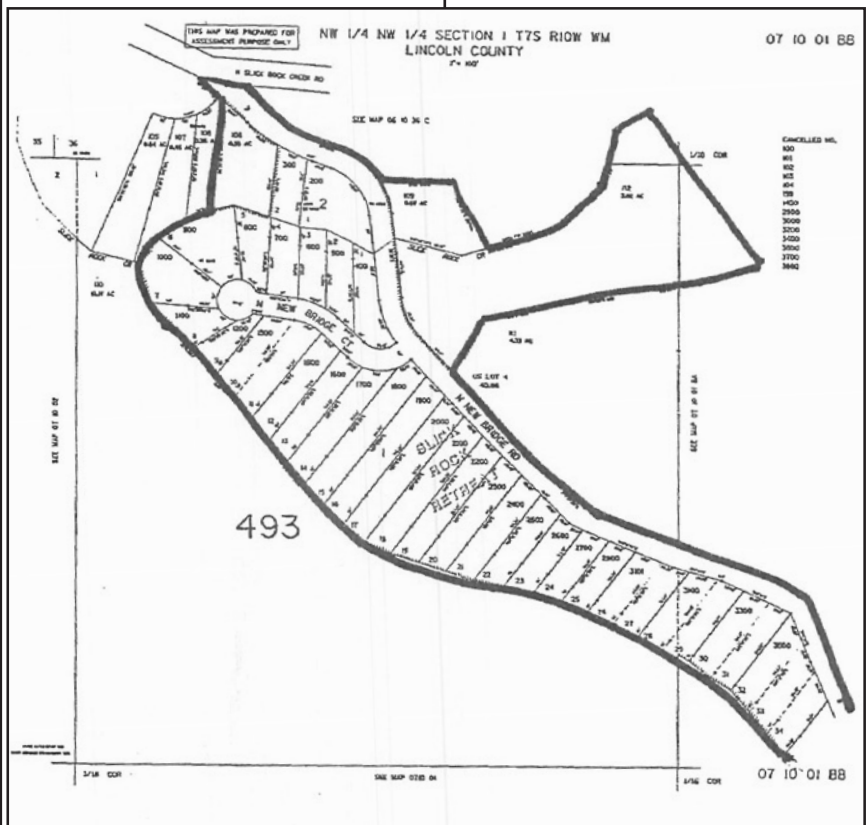
Summary: Approval of this measure would form New Bridge Special Road District, a special road district in north Lincoln County consisting of the Slick Rock Retreat, Section 1, Township 7 South, Range 10 West, Willamette Meridian; and the following property in Section 36, Township 6 South, Range 10 West, Willamette Meridian: Tax Lots 1200 and 1300.

Approval of this measure would also approve a permanent tax rate limit for the district of \$1 per \$1,000 assessed property value as the maximum rate of operating taxes for the district, beginning in fiscal tax year 2014-2015.

The boundary of the proposed district consists of Assessor's Map Tax Lots 07-10-01-BB: 00106, 00109, 00112, 00200-01300, 01500-02800, 03100-3500; Map Tax Lots: 07-10-01-BD 00100-1100; Map Tax Lots 06-10-36-C 01200 and 01300.

Yes

No



WARNING

Any person who, by use of force or other means, unduly influences an elector to vote in any particular manner or to refrain from voting is subject to a fine. (ORS 254.470)